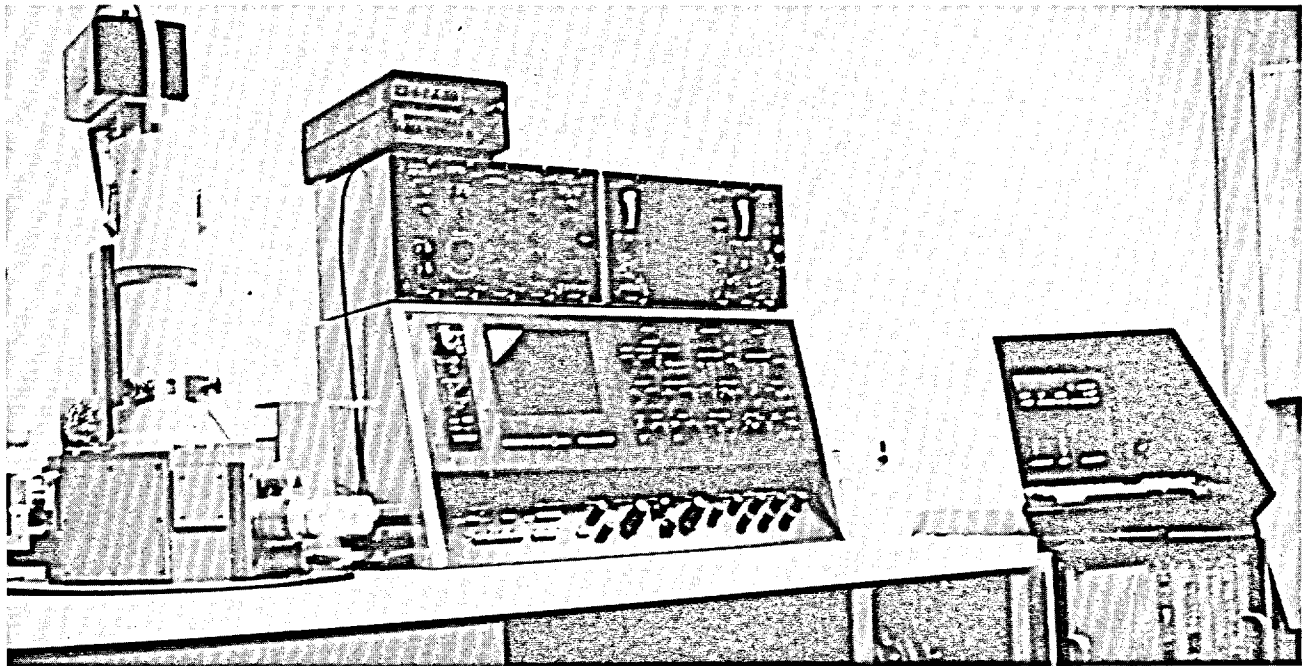


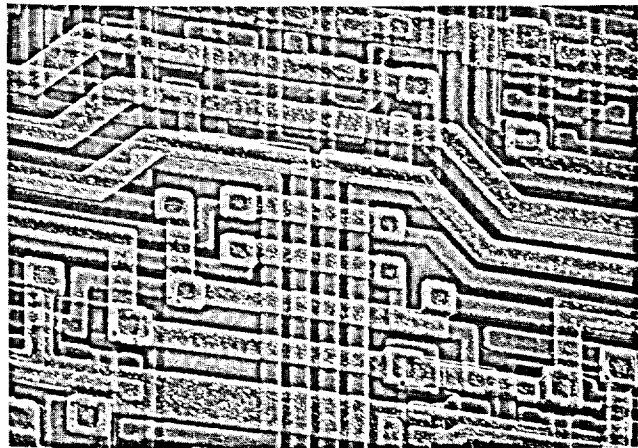
*Bausch & Lomb/Canada's new headquarters.*



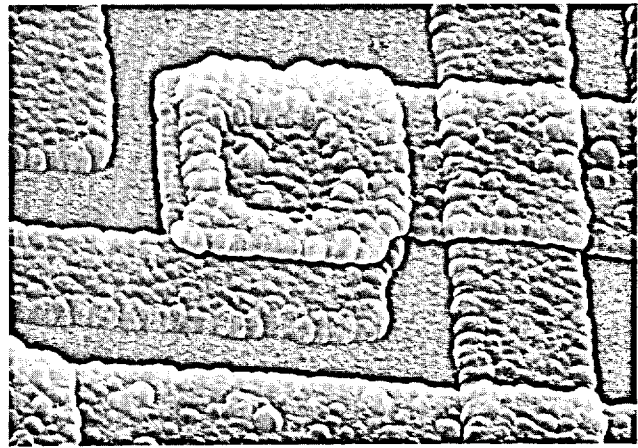
*Manufacturing area at the new facility is more than twice the size of the previous plant.*



*Nanolab 2100 SEM in the Applications Laboratory at Bausch & Lomb/Canada's Ottawa facility.*



*Integrated circuit at X350 magnification (sample courtesy of Siltronics, Ottawa).*



*The same sample at X8000 magnification shows details of the contact window.*