

DR. M'LANE'S Celebrated American WORM SPECIFIC, OR VERMIFUGE.

SYMPTOMS OF WORMS. The countenance is pale and leaden-colored, with occasional flushes, or a circumscribed spot on one or both cheeks; the eyes become dull; the pupils dilate; an azure semicircle runs along the lower eyelid; the nose is irritated, swells, and sometimes bleeds; a swelling of the upper lip; occasional headache, with humming or throbbing of the ears; an unusual secretion of saliva; slimy or furred tongue; breath very foul, particularly in the morning; appetite variable, sometimes voracious, with a gnawing sensation of the stomach, at others, entirely gone; fleeting pains in the stomach; occasional nausea and vomiting; violent pains throughout the abdomen; bowels irregular, at times costive; stools slimy; not unfrequently tinged with blood; belly swollen and hard; urine turbid; respiration occasionally difficult, and accompanied by hiccup; cough sometimes dry and convulsive; uneasy and disturbed sleep, with grinding of the teeth; temper variable, but generally irritable, &c.

Whenever the above symptoms are found to exist, DR. M'LANE'S VERMIFUGE Will certainly effect a cure. Its universal success which has attended the administration of this preparation has been such as to warrant us in pledging ourselves to the public to RETURN THE MONEY in every instance where it should prove ineffectual: "providing the symptoms attending the sickness of the child or adult should warrant the supposition of worms being the cause." In all cases the Medicine to be given in STRICT ACCORDANCE WITH THE DIRECTIONS. We pledge ourselves to the public, that Dr. M'LANE'S Vermifuge DOES NOT CONTAIN MERCURY in any form; and that it is an innocent preparation, not capable of doing the slightest injury to the most tender infant.

Address all orders to FLEMING BROS., PITTSBURGH, P. S. Dealers and Physicians ordering from other than Fleming Bros., will do well to write their orders distinctly, and take note that Dr. M'LANE'S Vermifuge is prepared by Fleming Bros., Pittsburgh, Pa. To those wishing to give them a trial, we will forward, per mail, post paid, to any part of the United States, one box of Pills for twelve three-cent postage stamps, or one vial of Vermifuge for fourteen three-cent stamps. All orders from Canada must be accompanied by twenty cents extra.

A GREAT OFFER!!—Horace Waters & Son, 481 Broadway, N. York, will dispose of 100 PIANOS, MELODEONS and ORGANS of first-class makers, including Waters's, at very low prices for cash, or part cash, and balance in small monthly instalments. New 7-octave first class PIANOS, modern improvements, for \$275 cash. The WATERS CONCERTO PARLOR ORGANS, are the most beautiful in style and perfect tone ever made: Illustrated Catalogues mailed.

WRIGHT & BROGAN NOTARIES, [Office]—58 St. Francois Xavier Street, MONTREAL.

JONES & TOOMEY, HOUSE, SIGN, AND ORNAMENTAL PAINTERS, GRAINERS, GLAZIERS, PAPER-HANGERS, &c., 660 CRAIG STREET, (Near Bleury) MONTREAL.

ALL ORDERS PUNCTUALLY ATTENDED TO.

ST. MICHAEL'S COLLEGE, TORONTO, ONT. UNDER THE SPECIAL PATRONAGE OF THE MOST REVEREND ARCHBISHOP LYNCH, AND THE DIRECTION OF THE REV. FATHERS OF ST. BASIL'S.

STUDENTS can receive in one Establishment either a Classical or an English and Commercial Education. The first course embraces the branches usually required for young men who prepare themselves for the learned professions. The second course comprises, in like manner, the various branches which form a good English and Commercial Education, viz: English Grammar and Composition, Geography, History, Arithmetic, Book-Keeping, Algebra, Geometry, Surveying, Natural Philosophy, Chemistry, Logic, and the French and German Languages. TERMS. Full Boarders, per month, \$12.50 Half Boarders, do 7.50 Day Pupils, do 2.50 Washing and Mending, do 1.20 Complete Bedding, do 0.60 Stationery, do 0.30 Music, do 2.00 Painting and Drawing, do 1.20 Use of the Library, do 0.20 N.B.—All fees are to be paid strictly in advance in three terms, at the beginning of September, 10th of December, and 20th of March. Defaulters after one week from the first of a term will not be allowed to attend the College. Address, REV. C. VINCENT, President of the College. Toronto, March 1, 1873]

NEW BOOKS. SERMONS AND LECTURES

BY THE Very Rev. Thomas N. Burke, O.P.

(FATHER BURKE'S OWN EDITION), Large 8vo., Cloth, 650 Pages, WITH PORTRAIT,

CONTAINING THIRTY-EIGHT LECTURES AND SERMONS.

PRICE, \$3 50.

IRISH WIT AND HUMOR,

Containing Anecdotes of Swift, Curran, O'Leary, AND O'Connell.

Cloth. 300 Pages. Price, \$1 00

ADVICE TO IRISH GIRLS IN AMERICA.

BY THE Nun of Kenmare. Cloth. 200 Pages. Price, \$1 00

LIFE AND TIMES OF O'CONNELL

8vo. CLOTH. Price, \$2 00

LEGENDS OF ST. JOSEPH.

BY Mrs. J. Sadlier. Cloth. 350 Pages. Price, \$0 80

DYRBINGTON COURT.

BY Mrs. Parsons. Cloth. 400 Pages. Price, \$1 00

SENT FREE BY MAIL

OR RECEIPT OF PRICE.

ORDERS SOLICITED

FROM BOOK CANVASSERS

THROUGHOUT THE DOMINION.

D. & J. SADLIER & CO., MONTREAL.

VALUABLE FARM FOR SALE. THE subscriber begs to offer for sale his farm situated in the township of Sheen, being composed of Lots 16, 17 and 18, in the 1st Range, and containing THREE HUNDRED ACRES of valuable land, well watered and well fenced and in a high state of cultivation and about fifty acres cleared on each lot, there also stands on Lot 17 one good Dwelling House, 24x20, with Kitchen, 18x18, one Stable, three large Barns, one large Store House, Wood Sheds, &c., &c. He also offers for sale all his movable property on the premises, consisting of Stock, Household Furniture and Farming Implements. All will be sold without reserve together or separate to suit purchasers. Indisputable title will be given at liberal terms and possession given immediately. Application to be made on the premises to the undersigned. SHEEN, Co. Pontiac. EDWARD CARLIN.

F. A. QUINN, ADVOCATE, No. 55, St. James Street, MONTREAL.

NEW GOODS! NEW GOODS!! JUST RECEIVED

AT WILLIAM MURRAY'S, 87 St. Joseph Street, A SPLENDID ASSORTMENT of Gold Jewellery and Fancy Goods, comprising Gold and Silver Watches, Gold Chains, Lockets, Bracelets, Brooches, Scarf Pins, &c., &c. As Mr. M. selects his Goods personally from the best English and American Houses, and buys for cash, he lays claim to be able to sell cheaper than any other house in the Trade. Remember the Address—87 St. Joseph Street, MONTREAL.

REMOVAL. O'FLAHERTY & BODEN, (Successors to G. & J. Moore), HATTERS and FURRIERS, No. 269 Notre Dame Street.

The Subscribers would respectfully inform their patrons and the public that they have removed the whole of their Stock-in-trade from 221 McGill to No. 269 Notre Dame street, the premises lately occupied by Messrs. G. & J. Moore, and next door to Savage, Lyman & Co., Jewellers. Their stock comprises every novelty in Hats from the best houses, and they would invite attention to their stock of STRAW GOODS, which is large and varied. They will make it their constant study to merit a continuance of the generous patronage bestowed on them, for which they beg to tender their most sincere thanks. O'FLAHERTY & BODEN, Hatters and Furriers, No. 269 Notre Dame St.

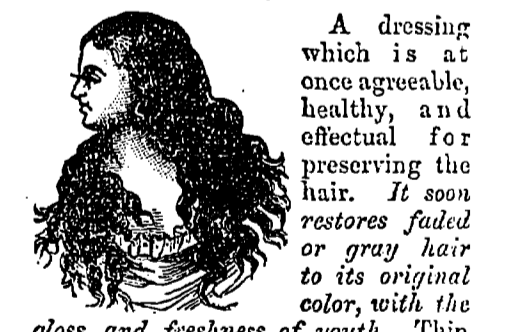
CENTRAL MARBLE WORKS, (Cor. Alexander & Lagacheletiers Sts.)

TANSEY AND O'BRIEN, SCULPTORS AND DESIGNERS.

MANUFACTURERS OF every Kind of Marble and Stone Monuments. A large assortment of which will be found constantly on hand at the above address, as also a large number of Mantel Pieces from the plainest style up to the most perfect in Beauty and grandeur not to be surpassed either in variety of design or perfection of finish. IMPORTERS OF Scotch Granite Monuments, Manufacturers of Altars, Baptismal Fonts, Mural Tablets, Furniture Tops, Plumbers Marbles, Busts, AND FIGURES OF EVERY DESCRIPTION. B. TANSEY M. J. O'BRIEN.

Wm. E. DORAN, ARCHITECT, 199 St. James Street, 199 (Opposite Molson's Bank) MONTREAL. MEASUREMENTS AND VALUATIONS ATTENDED TO.

Ayer's Hair Vigor, For restoring to Gray Hair its natural Vitality and Color.



A dressing which is at once agreeable, healthy, and effectual for preserving the hair. It soon restores faded or gray hair to its original color, with the gloss and freshness of youth. Thin hair is thickened, falling hair checked, and baldness often, though not always, cured by its use. Nothing can restore the hair where the follicles are destroyed, or the glands atrophied and decayed; but such as remain can be saved by this application, and stimulated into activity, so that a new growth of hair is produced. Instead of fouling the hair with a pasty sediment, it will keep it clean and vigorous. Its occasional use will prevent the hair from turning gray or falling off, and consequently prevent baldness. The restoration of vitality it gives to the scalp arrests and prevents the formation of dandruff, which is often so uncleanly and offensive. Free from those deleterious substances which make some preparations dangerous and injurious to the hair, the Vigor can only benefit but not harm it. If wanted merely for a HAIR DRESSING, nothing else can be found so desirable. Containing neither oil nor dye, it does not soil white cambric, and yet lasts long on the hair, giving it a rich, glossy lustre, and a grateful perfume.

Prepared by Dr. J. C. Ayer & Co., Practical and Analytical Chemists, LOWELL, MASS. NORTHROP & LYMAN, Newcastle, Neweastle, General Agents.

GRAY'S SYRUP OF RED SPRUCE GUM FOR COUGHS, COLDS, LOSS OF VOICE, HOARSENESS, BRONCHIAL AND THROAT AFFECTIONS.

THE GUM which exudes from the Red Spruce tree is, without doubt, the most valuable native Gum for Medicinal purposes. Its remarkable power in relieving certain severe forms of Bronchitis and its almost specific effect in curing obstinate hacking Coughs, is now well known to the public at large. In this Syrup (carefully prepared at low temperature), containing a large quantity of the finest picked Gum in complete solution all the Tonic, Expectant, Balsamic and Anti-spasmodic effects of the Red Spruce Gum are fully preserved. For sale at all Drug Stores. Price, 25 cents per bottle. Sole manufacturer, HENRY R. GRAY, Chemist, Montreal, 1872.

WILLIAM H. HODSON, ARCHITECT, No. 59 St. BONAVENTURE STREET MONTREAL. Plans of Buildings prepared and Superintendence at Moderate Charges. Measurements and Valuations Promptly Attended to

HEARSES! HEARSES!! MICHAEL FERON, No. 23 St. ANTOINE STREET, BEGS to inform the public that he has procured several new, elegant, and handsomely finished HEARSEs, which he offers to the use of the public at very moderate charges. M. Feron will do his best to give satisfaction to the public. Montreal, March, 1871.

PETER CARROLL, PRACTICAL PLUMBER, GAS, & STEAMFITTER, No. 799 Craig Street, MONTREAL. ALL JOBBING PERSONALLY ATTENDED TO.

EYE DISEASES. DR. ED. DESJARDINS, CLINICAL DISPENSARY, NAZARETH ASYLUM, St. CATHERINE STREET. Advice and attendance given gratuitously to the poor every day (except Sundays) at two o'clock afternoon. m-26-2.

WALSH'S CLOTHING HOUSE, 463 Notre Dame Street, (Near McGill Street) MONTREAL. CIVIL AND MILITARY TAILORING. The best CUTTERS in the Dominion engaged, and only First-Class Coat, Pants, and Vest makers employed. An Immense Assortment of Gentlemen's, Youths' and Boys' MADE-UP CLOTHING always in stock. A CALL SOLICITED. W. WALSH & CO.

VILLA MARIA LOTTERY, In aid of Several Religious Institutions. 32,000 Tickets, at \$1 Each. 11 Tickets for \$10. 22 " " 20.

READ THE FOLLOWING LIST OF VALUABLE PRIZES.— Two residences on Basin Street, Montreal, (now rented at \$500 per annum) \$5,000 2 Lots, St. Denis and Tannery streets, \$700 each. 1,400 8 Lots at Cote St. Catherine, at \$300 each. 2,400 48 Lots at do do do at \$150 each. 7,200 1 Gold Prize. 1,000 50 do do of \$50 each. 2,500 100 do do of \$5 each. 500 200 do do of \$3 each. 600 600 do do of \$1 each. 600 One thousand and ten prizes valued at \$21,200 GIFTS: 1 To the Catholic Bishop, to help the construction of the Cathedral Church. \$2,000 2 To help the erection of Notre Dame de Lourdes Chapel. 1,000 3 To the Poor (St. Vincent de Paul Society). 1,000 4 To the Sisters of Good Shepherd. 500 5 To the Jesuits. 500 6 To the Oblates. 500 7 To the Sisters of Mercy. 500 8 To the Sisters of Providence. 500 9 To the Piopolis Colony. 500

The money will be deposited in the hands of the Attorney of the Bishop's Palace, of Montreal. The undersigned will each week make a deposit of the money of the Tickets sold, and he shall be obliged to publish in the Nouveau Monde the receipt of the deposit accompanying the numbers that shall have been sold. The Episcopal Corporation shall be responsible only for the numbers that shall have been so announced accompanied by the receipt of the deposit. All persons who have taken Tickets and whose numbers are not published in the said journal, are requested to notify the Treasurer without delay to prevent error. The Drawing will be publicly made after the method adopted by Building Societies, and shall be overlooked by three Priests and three Laymen. The Real Properties given in Prizes are held now in the name of the Episcopal Corporation who will pass Title to the winner after the Lottery on payment of the cost of the Deed. For Tickets and all other information address G. H. DUMESNIL, Manager and Treasurer Villa Maria Lottery, No. 5 St. Sacrament St., Montreal. Responsible Agents Wanted.

THE MENEELY BELL FOUNDRY, [ESTABLISHED IN 1826.] THE Subscribers manufacture and have constantly for sale at their old established Foundry, their Superior Bells for Churches, Academies, Factories, Steamboats, Locomotives, Plantations, &c., mounted in the most approved and substantial manner with their new Patented Yoke and other improved Mountings, and warranted in every particular. For information in regard to Keys, Dimensions, Mountings, Warranted, &c., send for a Circular Address. R. A. & C. R. MENEELY, West Troy, N. Y.

ST. LAWRENCE ENGINE WORKS. NOS. 17 TO 29 MILL STREET. MONTREAL P. Q. W. P. BARTLEY & CO. ENGINEERS, FOUNDERS AND IRON BOAT BUILDERS.

HIGH AND LOW PRESSURE STEAM ENGINES AND BOILERS. MANUFACTURERS OF IMPROVED SAW AND GRIST MILL MACHINERY. Boilers for heating Churches, Convents, Schools and Public buildings, by Steam, or hot water. Steam Pumping Engines, pumping apparatus for supplying Cities, and Towns, Steam pumps, Steam Winches, and Steam fire Engines. Castings of every description in Iron, or Brass. Cast and Wrought Iron Columns and Girders for Buildings and Railway purposes. Patent Hoists for Hotels and Warehouses. Propeller Screw Wheels always in Stock or made to order. Manufacturers of the Cole "Samson Turbine" and other first class water Wheels. SPECIALITIES. Bartley's Compound Beam Engine is the best and most economical Engine Manufactured, it saves 33 per cent. in fuel over any other Engine. Saw and Grist Mill Machinery. Shafting, Pulleys, and Hangers. Hydrants, Valves &c. &c. 1-7-36

JOHN MARKUM, PLUMBER, GAS AND STEAM-FITTER, TIN AND SHEET-IRON WORKER, &c., Importer and Dealer in all kinds of WOOD AND COAL STOVES 712 CRAIG STREET, (Five doors East of St. Patrick's Hall, opposite Alexander Street) MONTREAL.

GRAND TRUNK RAILWAY COMPANY OF CANADA.

1872-73 SUMMER ARRANGEMENTS. 1872-3 Pullman Palace Parlor and Handsome New Ordinary Cars on all Through Day Trains, and Palace Sleeping Cars on all Through Night Trains over the whole Line. TRAINS now leave Montreal as follows— GOING WEST. Day Mail for Prescott, Ogdensburg, Ottawa, Brockville Kingston, Belleville, Toronto, Guelph, London, Brantford, Goderich, Buffalo, Detroit, Chicago, and all points West, at 8:00 a.m. Night Express " " " " 9:00 p.m. Mixed Train for Toronto, stopping at all Stations at 6:00 a.m. Passenger Train for Brockville and all Intermediate Stations. 6:00 p.m. Local Train for Vaudeuil at 5:00 p.m. every week day except Saturday when it leaves at 2:00 p.m. Trains Montreal for Lachine at 7:00 a.m., 9:00 a.m., 12 Noon, 3:00 p.m., 5:00 p.m. and 6:00 p.m. Trains leave Lachine for Montreal at 8 a.m., 10:00 a.m., 1:00 p.m., 3:30 p.m., 5:30 p.m. and 7:00 p.m. The 3:00 p.m. Train runs through to Province line.

GOING EAST. Day Train for the White Mountains, Portland and Boston. 7:00 a.m. Day Train for Quebec, Riviere du Loup, Cacouna, and Trois Pistoles. 8:00 a.m. Mail Train for St. Hyacinthe, Richmond, Sherbrooke, and Island Pond. 1:45 p.m. Accommodation Train for Richmond and Way Stations. 5:15 p.m. Night Train for Island Pond, White Mountains, Portland, Boston, and the Lower Provinces. 10:00 p.m. Night Mail Train for Quebec, stopping at St. Hilaire and St. Hyacinthe. 11:00 p.m.

GOING SOUTH. Train for Rouens Point connecting with Steamers on Lake Champlain. 6:00 a.m. Express for Boston via Vermont Central Railroad, at 8:45 a.m. Mail Train for St. John's and Rouses Point, connecting with Trains on the Stanstead, Shefford and Chambly, and South Eastern Counties Junction Railways, and steamers on Lake Champlain, at 3:15 p.m. Express for New York and Boston, via Vermont Central, at 3:45 p.m. As the punctuality of the trains depends on connections with other lines, the Company will not be responsible for trains not arriving at or leaving any station at the hours named.

The Steamer "FALMOUTH" leaves Portland every Tuesday at 5:30 p.m. for Halifax, N.S. The splendid steamer "C A R L O T T A," running in connection with the Grand Trunk Railway, leaves Portland for Halifax, N.S., every Saturday at 4:00 p.m. She has excellent accommodation for Passengers and Freight. The Steamship "CHASE" also runs between Portland and Halifax. The International Company's Steamers, also running in connection with the Grand Trunk Railway leave Portland every Monday and Thursday at 6:00 p.m., for St. John, N. B., &c. Baggage Checked Through. Through Tickets issued at the Company's principal stations. For further information, and time of Arrival and Departure of all Trains at the terminal and way stations, apply at the Ticket office, Bonaventure Station, or at No. 143 St. James Street. C. J. BRYDGES, Managing Director, Montreal, May 26, 1873.

MIDLAND RAILWAY OF CANADA TRAINS Leave Port Hope for Peterboro, Lindsay, Beaverton, Orillia as follows: Depart at 9:30 A.M. " " " " 3:30 P.M. Arrive " " " " 1:00 P.M. " " " " 6:45 P.M.

GREAT WESTERN RAILWAY.—TORONTO TRAM. Trains leave Toronto at 7:00 A.M., 11:50 A.M., 4:00 P.M., 8:00 P.M., 5:30 P.M. Arriving at Toronto at 10:10 A.M., 11:00 A.M., 1:15 P.M., 5:30 P.M., 9:20 P.M. Trains on this line leave Union Station five minutes after leaving Yonge-st. Station.

NORTHERN RAILWAY—TORONTO TRAM. City Hall Station. Depart 7:45 A.M. 3:45 P.M. Arrive 1:20 A.M. 9:20 P.M. Brook Street Station. Depart 5:40 A.M. 3:00 P.M. Arrive 11:00 A.M. 8:30 P.M.