

**DR. M'LANE'S**  
Celebrated American  
**WORM SPECIFIC,**  
OR  
**VERMIFUGE.**

**SYMPTOMS OF WORMS.**

THE countenance is pale and leaden-colored, with occasional flushes, or a circumscribed spot on one or both cheeks; the eyes become dull; the pupils dilate; an azure semicircle runs along the lower eyelid; the nose is irritated, swells, and sometimes bleeds; a swelling of the upper lip; occasional headache, with humming or throbbing of the ears; an unusual secretion of saliva; slimy or furred tongue; breath very foul, particularly in the morning; appetite variable, sometimes voracious, with a gnawing sensation of the stomach, at others, entirely gone; fleeting pains in the stomach; occasional nausea and vomiting; violent pains throughout the abdomen; bowels irregular, at times costive; stools slimy; not unfrequently tinged with blood; belly swollen and hard; urine turbid; respiration occasionally difficult, and accompanied by hiccup; cough, sometimes dry and convulsive; uneasy and disturbed sleep, with grinding of the teeth; temper variable, but generally irritable, &c.

Whenever the above symptoms are found to exist,

**DR. M'LANE'S VERMIFUGE**  
Will certainly effect a cure.

The universal success which has attended the administration of this preparation has been such as to warrant us in pledging ourselves to the public to

**RETURN THE MONEY** in every instance where it should prove ineffectual: "providing the symptoms at tending the sickness of the child or adult should warrant the supposition of worms being the cause." In all cases the Medicine to be given in STRICT ACCORDANCE WITH THE DIRECTIONS.

We pledge ourselves to the public, that **Dr. M'Lane's Vermifuge DOES NOT CONTAIN MERCURY** in any form; and that it is an innocent preparation, not capable of doing the slightest injury to the most tender infant.

Address all orders to

**FLEMING BROS., PITTSBURGH, P.**  
P. S. Dealers and Physicians ordering from other than Fleming Bros., will do well to write their orders distinctly, and take note that Dr. M'Lane's, prepared by Fleming Bros., Pittsburgh, Pa. To those wishing to give them a trial, we will forward per mail, post-paid, to any part of the United States, one box of Pills for twelve three-cent postage stamps, or one vial of Vermifuge for fourteen three-cent stamps. All orders from Canada must be accompanied by twenty cents extra.  
For sale by Druggists, and Country Storekeepers generally.

**A GREAT OFFER!!—Horace Waters, 481 Broadway, N.Y., will dispose of ONE HUNDRED PIANOS, MELODEONS and ORGANS of six first-class makers, including WARD, at EXTREMELY LOW PRICES FOR CASH, or will take cash and balance in monthly instalments. Now on hand first class PIANOS, all modern improvements, for \$275 cash. Now ready a new kind of PARLOR ORGAN, the most beautiful style and perfect tone ever made. Illustrated Catalogues mailed. Sheet Music, Instruction Books and Sunday-School Music Books.**

**WRIGHT & BROGAN**  
NOTARIES,  
Office—58 St. FRANCIS XAVIER STREET,  
MONTREAL.

**JONES & TOOMEY,**  
HOUSE, SIGN, AND ORNAMENTAL  
PAINTERS,  
GRAINERS, GLAZIERS, PAPER-HANGERS,  
&c.,  
15 ST. PATRICK'S HALL,  
(Victoria Square.)  
MONTREAL.

ALL ORDERS PUNCTUALLY ATTENDED TO.

**ST. MICHAEL'S COLLEGE,**  
TORONTO, ONT.

UNDER THE SPECIAL PATRONAGE OF THE  
MOST REVEREND ARCHBISHOP LYNCH,  
AND THE DIRECTION OF THE  
REV. FATHERS OF ST. BASIL'S.

TUDENTS can receive in one Establishment either a Classical or an English and Commercial Education. The first course embraces the branches usually required by young men who prepare themselves for the learned professions. The second course comprises, in like manner, the various branches which form a good English and Commercial Education, viz., English Grammar and Composition, Geography, History, Arithmetic, Book-Keeping, Algebra, Geometry, Surveying, Natural Philosophy, Chemistry, Logic, and the French and German Languages.

TERMS.

Full Boarders.....	per month,	\$12.50
Half Boarders.....	do	7.50
Day Pupils.....	do	2.50
Washing and Mending.....	do	1.20
Complete Bedding.....	do	0.80
Stationery.....	do	0.30
Music.....	do	2.00
Fainting and Drawing.....	do	1.20
Use of the Library.....	do	0.20

N.B.—All fees are to be paid strictly in advance in three terms, at the beginning of September, 10th of December, and 20th of March. Defaulters after one week from the first of a term will not be allowed to attend the College.  
Address, REV. C. VINCENT,  
President of the College.  
Toronto, March 1. 1872

**NEW BOOKS.**  
—  
**SERMONS AND LECTURES**

BY THE  
**Very Rev. Thomas N. Burke, O.P.,**

(FATHER BURKE'S OWN EDITION),  
Large 8vo., Cloth, 650 Pages,

WITH PORTRAIT,  
CONTAINING

**THIRTY-EIGHT**

**LECTURES**

AND

**SERMONS.**

PRICE, \$3 50.

—  
**IRISH WIT AND HUMOR,**

Containing Anecdotes of

Swift,  
Curran,  
O'Leary,

AND  
O'Connell.

Cloth. 300 Pages. Price, \$1 00

—  
**ADVICE TO IRISH GIRLS IN AMERICA.**

BY THE  
**Nun of Kenmare.**

Cloth. 200 Pages. Price, \$1 00

—  
**LIFE**

AND

**TIMES**

OF

**O'CONNELL.**

8vo. CLOTH. Price, \$2 00

—  
**LEGENDS OF ST. JOSEPH.**

BY  
**Mrs. J. Sadlier.**

Cloth. 350 Pages. Price, \$0 80

—  
**DYRBINGTON COURT.**

BY  
**Mrs. Parsons.**

Cloth. 400 Pages. Price, \$1 00

—  
SENT FREE BY MAIL

OR

RECEIPT OF PRICE.

—  
ORDERS SOLICITED

FROM

**BOOK CANVASSERS**

THROUGHOUT THE DOMINION;

—  
**D. & J. SADLIER & CO.,**

MONTREAL.

**F. A. QUINN,**  
ADVOCATE,  
No. 49, St. James Street,  
MONTREAL.

**GUYOT'S TAR**  
CONCENTRATED PROOF LIQUEUR

Mr Guyot has succeeded in depriving tar of its insupportable sourness and bitterness, and in rendering it very soluble. Profiting by this happy discovery, he prepares a concentrated liqueur of tar, which in a small volume contains a large proportion of the active principle.

Guyot's tar possesses all the advantages of ordinary tar-water without any of its drawbacks. A glass of excellent tar-water without any disagreeable taste may be instantaneously obtained by pouring a teaspoonful into a glass of water.

Any one can thus prepare his glass of tar-water at the moment he requires it, thus economizing time, facilitating carriage and obviating the disagreeable necessity of handling tar.

Guyot's tar replaces advantageously several more or less inactive plasters in the treatment of colds, bronchitis, coughs, and catarrhs.

Guyot's tar is employed with the greatest success in the following diseases:—  
**AS A DRUG.—A teaspoonful in a glass of water, or two tablespoonfuls in a bottle.**

**BRONCHITIS**  
**CATARRH OF THE BLADDER**  
**COLDS**  
**OBSTINATE COUGHS**  
**IRRITATION OF THE CHEST**  
**PULMONARY CONSUMPTION**  
**WHOPPING COUGH**  
**DISEASES OF THE THROAT**

**AS A LOTION.—Pure or diluted with a little water.**

**AFFECTIONS OF THE SKIN**  
**ITCHINGS**  
**DISEASES OF THE SCALP**

Guyot's tar has been tried with the greatest success in the principal hospitals of France, Belgium, and Spain. Experience has proved it to be the most hygienic drink in time of epidemics.

Detailed instructions accompany each bottle  
Depot in Paris, L. FABRE, 19, rue Jacob.  
General Agents for Canada,  
**FABRE & GRAVEL, Montreal.**

**NEW GOODS! NEW GOODS!!**  
JUST RECEIVED

AT  
**WILLIAM MURRAY'S,**  
87 St. Joseph Street,

A SPLENDID ASSORTMENT of Gold Jewellery and Fancy Goods, comprising Gold and Silver Watches, Gold Chains, Lockets, Bracelets, Brooches, Scarf Pins, &c., &c.

As Mr. M. selects his Goods personally from the best English and American Houses, and buys for cash, he lays claim to be able to sell cheaper than any other house in the Trade.

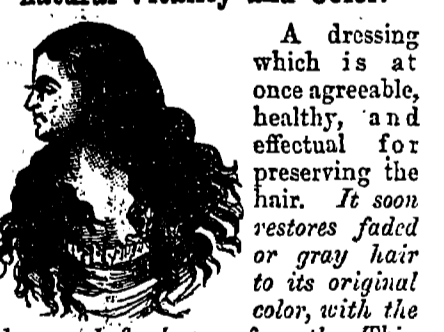
Remember the Address—87 St. Joseph Street,  
MONTREAL.

**REMOVAL.**

O'FLAHERTY & BODEN, (Successors to G. & J. Moore), HATTERS and FURRIERS, No. 269 Notre Dame Street. The Subscribers would respectfully inform their patrons and the public that they have removed the whole of their Stock-in-trade from 221 McGill to No. 269 Notre Dame street, the premises lately occupied by Messrs. G. & J. Moore, and next door to Savago, Lyman & Co., Jewellers. Their stock comprises every novelty in HATS from the best houses, and they would invite attention to their stock of STRAW GOODS, which is large and varied. They will make it their constant study to merit a continuance of the generous patronage bestowed on them, for which they beg to tender their most sincere thanks.

O'FLAHERTY & BODEN,  
Hatters and Furriers, No. 269 Notre Dame St.

**Ayer's Hair Vigor,**  
For restoring to Gray Hair its natural Vitality and Color.



A dressing which is at once agreeable, healthy, and effectual for preserving the hair. It soon restores faded or gray hair to its original color, with the gloss and freshness of youth. Thin hair is thickened, falling hair checked, and baldness often, though not always, cured by its use. Nothing can restore the hair where the follicles are destroyed, or the glands atrophied and decayed; but such as remain can be saved by this application, and stimulated into activity, so that a new growth of hair is produced. Instead of fouling the hair with a pasty sediment, it will keep it clean and vigorous. Its occasional use will prevent the hair from turning gray or falling off, and consequently prevent baldness. The restoration of vitality it gives to the scalp arrests and prevents the formation of dandruff, which is often so uncleanly and offensive. Free from those deleterious substances which make some preparations dangerous and injurious to the hair, the Vigor can only benefit but not harm it. If wanted merely for a HAIR DRESSING, nothing else can be found so desirable. Containing neither oil nor dye, it does not soil white cambric, and yet lasts long on the hair, giving it a rich, glossy lustre, and a grateful perfume.

Prepared by **Dr. J. C. Ayer & Co.,**  
Practical and Analytical Chemists,  
**LOWELL, MASS.**  
**NORTHROP & LYMAN,**  
Newcastle,  
General Agents.

**JOHN MARKUM,**  
PLUMBER, GAS AND STEAM-FITTER,  
TIN AND SHEET-IRON WORKER, &c.,  
Importer and Dealer in all kinds of  
**WOOD AND COAL STOVES**  
**712 CRAIG STREET,**  
(Five doors East of St. Patrick's Hall, opposite Alexander Street.)  
MONTREAL.  
JOBBER PUNCTUALLY ATTENDED TO

**GRAY'S SYRUP**  
OF  
**RED SPRUCE GUM**

FOR  
**COUGHS, COLDS, LOSS OF VOICE, HOARSENESS, BRONCHIAL AND THROAT AFFECTIONS.**

THE GUM which exudes from the Red Spruce tree is, without doubt, the most valuable native Gum for Medicinal purposes.

Its remarkable power in relieving certain severe forms of Bronchitis and its almost specific effect in curing obstinate hacking Coughs, is now well known to the public at large. In this Syrup (carefully prepared at low temperature), containing a large quantity of the finest picked Gum in complete solution all the Tonic, Expectorant, Balsamic and Anti-spasmodic effects of the Red Spruce Gum are fully preserved. For sale at all Drug Stores. Price, 25 cents per bottle.

Sole manufacturer,  
**HENRY R. GRAY,**  
Chemist,  
Montreal, 1872.

**THE GREAT**  
**ENGLISH AND SCOTCH QUARTERLIES**

AND  
**BLACKWOOD'S MAGAZINE,**

REPRINTED IN NEW YORK BY  
**THE LEONARD SCOTT PUBLISHING COMPANY**  
QUARTERLY.

The Edinburgh Review, London Quarterly Review  
North British Review, Westminster Review.  
MONTHLY.  
Blackwood's Edinburgh Magazine.

These periodicals are the medium through which the greatest minds, not only of Great Britain and Ireland, but also of Continental Europe, are constantly brought into more or less intimate communication with the world of readers. History, Biography, Science, Philosophy, Art, Religion, the great political questions of the past and of to-day, are treated in their pages as the learned alone can treat them. No one who would keep pace with the times can afford to do without these periodicals.

Of all the monthlies Blackwood holds the foremost place.

TERMS.

For any one of the Reviews.....	\$4 00	per annum
For any two of the Reviews.....	7 00	"
For any three of the Reviews.....	10 00	"
For all four of the Reviews.....	12 00	"
For Blackwood's Magazine.....	4 00	"
For Blackwood and one Review..	7 00	"
For Blackwood and any two of the Reviews.....	10 00	"
For Blackwood and three of the Reviews.....	13 00	"
For Blackwood and the four Reviews.....	15 00	"
Single numbers of a Review, \$1; single numbers of Blackwood, thirty-five cents. Postage two cents a number.		

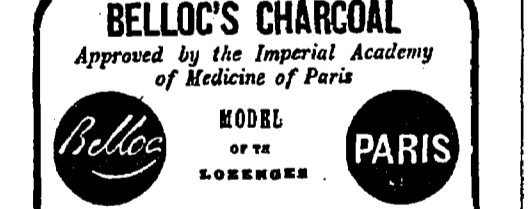
Circulars with further particulars may be had on application.  
For Sale by Dawson Bros., Montreal.  
**LEONARD SCOTT PUBLISHING CO.,**  
New York.

**THE MENEELY BELL FOUNDRY,**  
[ESTABLISHED IN 1826.]

THE Subscribers manufacture and have constantly for sale at their old established Foundry, their Superior Bells for Churches, Academies, Factories, Steamboats, Locomotives, Plantations, &c., mounted in the most approved and substantial manner with their new Patented Yoke and other improved Mountings, and warranted in every particular. For information in regard to Keys, Dimensions, Mountings, Warranted, &c., send for a Circular Address.

**E. A. & C. R. MENEELY,**  
West Troy, N. Y.

**BELLOC'S CHARCOAL**  
Approved by the Imperial Academy of Medicine of Paris



It is especially to its eminently absorbent properties that Belloc's Charcoal owes its great efficacy. It is especially recommended for the following affections:  
**GASTRALGIA**  
**DYSPEPSIA**  
**PYROSIS**  
**ACIDITY**  
**DIFFICULT DIGESTION**  
**CRAMPS IN THE STOMACH**  
**CONSTIPATION**  
**COLICS**  
**DIARRHŒA**  
**DYSENTERY**  
**CHOLERINE**

**MODE OF EMPLOYMENT.**—Belloc's Charcoal is taken before or after each meal, in the form of Powder or Lozenges. In the majority of cases, its beneficial effects are felt after the first dose. Detailed instructions accompany each bottle of powder and box of lozenges.  
Depot in Paris, L. FABRE, 19, rue Jacob  
General Agents for Canada,  
**FABRE & GRAVEL, Montreal.**

**HEARSES! HEARSES!!**  
**MICHAEL FERON,**  
No. 23 St. ANTOINE STREET,

BEGS to inform the public that he has procured several new, elegant, and handsomely finished HEARSEs, which he offers to the use of the public at very moderate charges.  
M. Feron will do his best to give satisfaction to the public.  
Montreal, March, 1871.

**SELECT DAY SCHOOL.**  
Under the direction of the  
**SISTERS OF THE CONGREGATION DE NOTRE DAME,**

**744 PALACE STREET.**  
HOURS OF ATTENDANCE—From 9 till 11 A.M.; and from 1 to 4 P.M.

The system of Education includes the English and French languages, Writing, Arithmetic, History, Geography, Use of the Globes, Astronomy, Lectures on the Practical and Popular Sciences, with Plain and Ornamental Needle Work, Drawing, Music Vocal and Instrumental; Italian and German extra. No deduction made for occasional absence. If 1 Pupil take dinner in the Establishment \$8 7 extra per quarter.

**JAMES CONAUGHTON,**  
**CARPENTER, JOINER and BUILDER,** constantly keeps a few good Jobbing Hands.

All Orders left at his Shop, No 10, St. EDWARD STREET, (off Bleury), will be punctually attended to.  
Montreal, Nov. 22, 1866.

**GRAND TRUNK RAILWAY COMPANY OF CANADA.**



**TRAINS NOW LEAVE BONAVENTURE STREET STATION as follows**

**GOING WEST.**

Day Express for Ogdensburg, Ottawa, Brockville, Kingston, Belleville, Toronto, Guelph, London, Brantford, Goderich, Buffalo, Detroit, Chicago, and all points West, at 7.50 A.M.

Night " " " 9 P.M.  
Night Mail Train for Toronto and all Intermediate Stations at 6.00 P.M.

Trains for Lachine at 7.00 A.M., 9.00 A.M., 12 Noon, 3.00 P.M., 5.00 P.M., and 6.15 P.M.

**GOING SOUTH AND EAST.**

Passenger Train for Boston and New York via Rousses Point and Lake Champlain steamers at 6.00 A.M.

Express for Boston via Vermont Central at 9.00 A.M. Express for New York and Boston via Vermont Central at 3.45 P.M.

Day Passenger Train for Island Pond and intermediate Stations at 7.00 A.M.

Mail Train for St. Hyacinthe, Richmond, Sherbrooke, Island Pond, Gorham, Portland, and Boston at 1.45 P.M.

Night Express for Quebec, River du Loup, Cacouna, Island Pond, Gorham, Portland, Boston, and the Lower Provinces at 10.30 P.M.

Sleeping Cars on all Night Trains, Baggage checked through.  
**C. J. BRYDGES, Managing Director.**

**BROCKVILLE & OTTAWA RAILWAY**  
WINTER ARRANGEMENTS.

Trains will leave Brockville at 7.45 A.M., connecting with Grand Trunk Express from the West, and arriving at Ottawa at 12.50 P.M.

Mail Train at 2.15 P.M., arriving at Ottawa at 0.00 P.M.

Express at 3.25 P.M., connecting with Grand Trunk Day Express from the West, and arriving at Ottawa at 7.25 P.M.

**LEAVE OTTAWA.**

Express at 10.00 A.M., arriving at Brockville at 1.50 P.M., and connecting with Grand Trunk Day Express going West.

Mail Train at 4.20 P.M., arriving at Sand Point at 7.45 A.M., and 3.45 P.M.

Trains on Canada Central and Perth Branch make certain connections with all Trains on the B. and O. Railway.

Freight loaded with despatch, and no transhipment when in car loads.  
**H. ABBOTT, Manager for Trustees.**

**PORT HOPE & BEAVERTON RAILWAY.**

Trains leave PORT HOPE daily at 9.15 a.m. and 3.00 p.m. for Perrytown, Summit, Millbrook, Fraserville and Beaverton.

Leave BEAVERTON daily at 2.45 p.m. for Fraserville, Millbrook, Summit, Perrytown and Port Hope.

**PORT HOPE AND WAKEFIELD RAILWAY.**  
Trains leave PORT HOPE daily at 10.25 a.m. and 4.25 p.m. for Quay's, Perrytown, Campbell's, Summit, Millbrook, Fraserville, Peterboro, and Wakefield.

Trains will leave WAKEFIELD daily at 8.20 a.m., for Peterboro, Fraserville, Millbrook, Summit, Campbell's, Perrytown, Quay's, arriving at Port Hope at 11.40 a.m.

**A. T. WILLIAMS, Superintendent.**

**GREAT WESTERN RAILWAY.—TORONTO TRM.**

Trains leave Toronto at 7.00 A.M., 11.50 A.M., 4.00 P.M., 8.00 P.M., 5.30 P.M.

Arriving at Toronto at 10.10 A.M., 11.00 A.M., 1.15 P.M., 5.30 P.M., 9.20 P.M.

Trains on this line leave Union Station five minutes after leaving Yonge-st. Station.

**NORTHERN RAILWAY—TORONTO TRM.**  
City Hall Station.

Depart 7.45 A.M., 3.45 P.M.  
Arrive 1.20 A.M., 9.20 P.M.

Brook Street Station.  
Depart 5.40 A.M., 3.00 P.M.  
Arrive 11.00 A.M., 8.30 P.M.

**VERMONT CENTRAL RAILROAD LINE.**  
SUMMER ARRANGEMENTS.

Commencing July 8, 1872.

Day Express leaves Montreal at 9.00 a.m., arriving in Boston via Lowell at 10.00 p.m.  
Train for Waterloo leaves Montreal at 3.15 p.m.  
Night Express leaves Montreal at 3.45 p.m., for Boston via Lowell, Lawrence, or Fitchburg, also for New York, via Springfield or Troy, arriving in Boston at 8.40 a.m., and New York at 12.30 p.m.