

# Miners Wanted To Chew BULL DOG TOBACCO,

Because it is the only Tobacco  
which does not excite **Thirst**  
for Water after using  
**TRY IT!**

The St. Lawrence Tobacco Co., Ltd.  
—Montreal—

—W. B. Reynolds, Halifax Representative—

## MINING SHOVELS

our 'FENERTY' Brand

COOK'S PAN SHOVELS.

COAL TRIMMERS SHOVELS.

SCRAPER SHOVELS, ETC.

—ARE USED BY—

*The Largest Mines in Canada*

MANUFACTURED BY

The HALIFAX SHOVEL CO.

HALIFAX, N. S.

ALL GOODS GUARANTEED.

*Genuine Garlock Parkings*  
FOR ALL PURPOSES.

**Pipe and Boiler Coverings,  
ENGINEERS SUPPLIES.**

also

"Tauril" High Pressure Jointing  
the Best Sheet Packing yet  
Produced.

**THE GARKOCK PACKING CO.**  
HAMILTON, ONTARIO.

Used by Collieries in Lancashire, Stafford-  
shire & Yorkshire

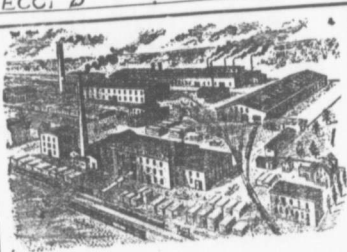
•XTERRA'

COLLIERY LAMP OIL  
For Marsech, Masech, Deflector or Closed Lamp.

LOW PRICE.

PURE WHITE FLAME.

E. WOLASTON, Dutton St. MANGHESTER  
Sole Representatives for Canada, AUSTEN BROS.,  
Halifax, N. S.



—MANUFACTURERS OF—

RAILWAY  
STREET and  
MINING

**CARS,**

CAR WHEELS

Church Pews.

FORGINGS &

Fittings for Stores, Schools &c.

CASTINGS

A SPECIALTY.

Large Stocks of Foreign and Domestic Lumber on Sale.

Rhodes,

BUILDING MATERIALS  
GENERAL.

Curry & Co., Ltd.

Branch

ROBBIE STREET  
HALIFAX, N. S.

AMHERST N. S.

**INTERCOLONIAL  
RAILWAY**

THE

**MARITIME EXPRESS**

Is the

Most Comfortable Train

in Canada.

Connecting Train  
leaves Stellarton 15.05

—FOR—

Quebec and Montreal.

Dining  
Car  
Service

Breakfast 75c.  
Luncheon 75c.  
Dinner \$1.00

Direct connections at Bonaventure Union Station,  
Montreal, with Grand Trunk Railway trains for all  
points in Ontario and the West.

—and to—  
DETROIT, BUFFALO, NIAGARA FALLS  
AND CHICAGO.