

MCCORMICK TURBINES

State your
Requirements
and
send for
Catalogue



Estimates
Furnished for
Complete
Power Plants,
and Results
Guaranteed

Represents a pair of 30-inch McCormick Turbines, with Governor and Fly-Wheel for regulating speed. The Turbine Shaft is direct-connected to a 750 k.w. Generator.

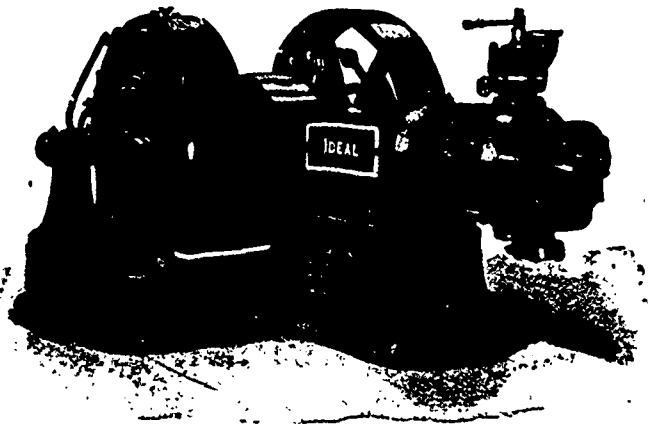
Four Outfits like this, developing 5,000 h.p., and one pair of 51 inch of 1,350 h.p., furnished the Sacramento Electric, Gas & Railway Co. Folsom, Cal. Power is transmitted 23 miles.

S. MORGAN SMITH CO. - YORK, PA., U.S.A.

THE Goldie & McCulloch Co. LIMITED

MANUFACTURERS OF

**IMPROVED
STEAM
ENGINES
AND
BOILERS**



Flouring Mills, And the Erec-
tion of Same in
the Most Complete Style of Modern
Improvement.

Wool Machinery,
Wood-Working Machinery
Saw Mill, Shingle and
Stave Machinery,
Fire and Burglar-Proof
Safes and Vault Doors.

THE "IDEAL" HIGH SPEED ENGINE, DIRECT-CONNECTED.

SPECIAL ATTENTION called to the "WHELOCK" IMPROVED STEAM ENGINE,
also the "IDEAL" HIGH SPEED ENGINE, cut of which appears above, as being Un-
equalled for Simplicity, Efficiency and Economy in Working, and Especially Adapted
for Electric Lighting, Street Railways, Etc.

† GALT, ONT.

BAIRD & TREE

MANUFACTURERS OF THE

**TREE
ROTARY
ENGINE**

Also J. R. Baird's Electrical, Gas and
Gasoline Engines, Water Motors, Etc.

ENGINE, BOILER, MILL AND FACTORY REPAIRING

Works: 39 Finkle St.,
Woodstock, Ont.

