

SOAP

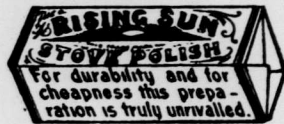


Gloriola Soap, per gross 12 00
Straw Hat Polish, per gross 10 20

STOVE POLISH.



No. 4-3 dozen in case, per gross .. 4 80
6-3 dozen in case " " " " 8 40



Rising Sun, 6-oz. cakes, 1/2 gross bxs. \$ 8 50
Rising Sun, 3-oz. cakes, gross bxs 4 50

Sun Paste, 10c. size, 1/4 gross boxes... 10 00
Sun Paste, 5c. size, 1/4 gross boxes.... 5 00



STARCH.

EDWARDSBURG STARCH CO., LTD.

Laundry Starches— per lb
No. 1 White or Blue, 4-lb. cartons 0 05 1/2
No. 2 " " 3-lb. " 0 05 1/2
Canada Laundry " " " 0 04 1/2
Silver Gloss, 6-lb. draw-lid boxes 0 07
Silver Gloss, 6-lb. tin canisters... 0 07
Edwards' Silver Gloss, 1-lb. pkg. 0 07
Kegs Silver Gloss, large crystals 0 06
Benson's Satin, 1-lb. cartons..... 0 07 1/2
No. 1 White, bbls. and kegs..... 0 04 1/2
Benson's Enamel, per box..... 3 00

Culinary Starch—
Benson & Co.'s Prep. Corn..... 0 06
Canada Pure Corn..... 0 04 1/2

Rice Starch—
Edwardsburg No. 1 white, 1-lb. cart. 0 09
Edwardsburg No. 1 White or Blue, 4-lb. lumps..... 0 07 1/2

KINGSFORD'S OSWEGO STARCH.



(40-lb. boxes, 1-lb. pkgs., 0 08
SILVER GLOSS (6-lb. boxes, sliding covers 0 08 1/2
(12-lb. boxes each crate)
PURE—40-lb. boxes 1-lb. pack..... 0 07
48-lb. " " 16 3-lb. boxes... 0 07
For puddings, custards, etc.
OSWEGO 40-lb. boxes, 1-lb. 07 1/2
CORN STARCH. packages.....

ONTARIO } 38-lb. to 45-lb. boxes,
STARCH } 6 bundles 0 06
STARCH IN } Silver Gloss..... 0 07 1/2
BARRELS } Pure 0 06 1/2



TEAS.

SALADA CEYLON.

Wholesale. Retail
Brown Label, 1's..... 0 20 0 25
" " 1/2's..... 0 21 0 26
Green Label, 1's and 1/2's..... 0 22 0 30
Blue Label, 1's, 1/2's, 1/4's and 1/8's... 0 30 0 40
Red Label, 1's and 1/2's..... 0 36 0 50
Gold Label, 1/2's..... 0 44 0 60



Ceylon Tea, in 1 and 1/2 lb. lead packages, black or mixed.

Black Label, 1-lb., retail at 25c..... 0 19
" " 1/2-lb., " " " " " 0 20
Blue Label, retail at 30c..... 0 22
Green Label " 40c..... 0 28
Red Label " 50c..... 0 35
Orange Label, retail at 60c..... 0 42
Gold Label, " 80c..... 0 55

CROWN BRAND.

Wholesale Retail
Red Label, 1-lb. and 1/2's..... 0 35 0 50
Blue Label, 1-lb. and 1/2's..... 0 38 0 40
Green Label, 1-lb. 0 19 0 25
Green Label, 1/2's..... 0 20 0 25
Japan, 1's..... 0 19 0 25



Cases, each 60 1-lb. 0 35
" " 60 1/2-lb. 0 35
" " 30 1-lb. 0 35
" " 120 1/2-lb. 0 36



LUDELLA CEYLON, 1'S AND 1/2'S PKGS.

Blue Label, 1's..... 0 18 1/2 0 25
Blue Label, 1/2's..... 0 19 0 25
Orange Label, 1's and 1/2's..... 0 21 0 30
Brown Label, 1's and 1/2's..... 0 28 0 40
Brown Label, 1/4's..... 0 30 0 40
Green Label, 1's and 1/2's..... 0 35 0 50
Red Label, 1/2's..... 0 40 0 60

TOBACCOS.

EMPIRE TOBACCO CO.

Smoking—Empire, 3's, 4's and 9's.... 0 36
Royal Oak, 2 x 3, Solace, 8s..... 0 52
Something Good, 7s..... 0 53
Louise, 2 x 3, 14s..... 0 54
Chewing Currency 13 1/2 oz. bars, 9s... 0 39
Patriot, 2 x 6, Navy 5s..... 0 41
Old Fox, Narrow 12s..... 0 44
Free Trade, 8s..... 0 44
Snowshoe, 10 1/2 oz. bars, 8s..... 0 44
Snowshoe, pound bars, 6s..... 0 44

WOODENWARE.

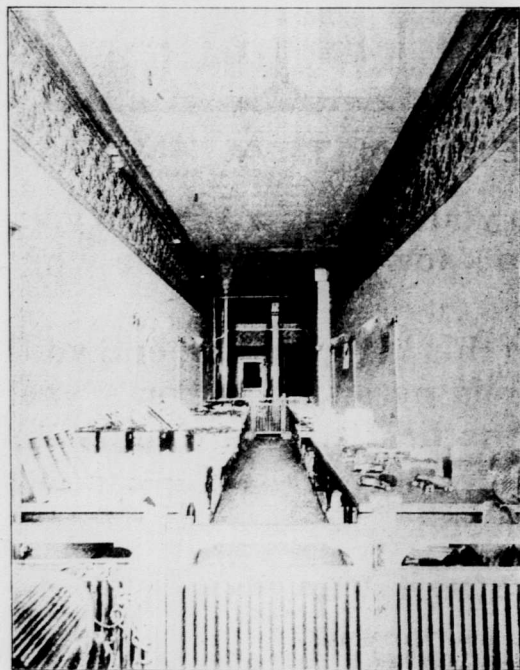
THE E. B. EDDY CO. per doz

Washboards, X..... 1 70
" XX..... 1 90
" Waverly..... 2 10
" Planet..... 2 00
" Special Globe... 2 10
" Solid Back Globe 2 20
" Electric Duplex... 3 00

Matches— 5-Case Single Case
Lots. Case
Telegraph \$3 70 \$3 90
Telephone 3 55 3 75
Tiger 3 45 3 65
Telephone (1/2 gross)..... 3 70 3 90
Empire, (slide box)..... 2 50 2 60
Safety, Capital..... 3 00 3 10
Parlor, Eagle, 200 s..... 1 50 1 60
" " 100 s..... 1 70 1 80
" Victoria..... 2 75 2 85
" Little Comet.... 2 00 2 10
Flamers..... 2 60 2 70
" (wax stems).... 3 70 3 80

BOECKH BROS. & COMPANY. Per doz

Washboards, Leader Globe 1 65
" Improved Globe..... 1 70
" Standard Globe 1 80
" Solid Back Globe 1 90
" Jubilee (perforated).... 2 45
" Crown..... 1 50
F. o. b. Toronto.
Matches, Kodak, per case (10 gross in case)..... 3 50



Luxfer Prisms successfully lighting a store 100 feet long.



Ordinary glass made the store unrentable without artificial light.

A visit to our test rooms will furnish ample proof that these contrast pictures underestimate rather than exaggerate the lighting results of Luxfer Prisms. Write for our blank form and obtain an estimate of cost.

Specified
by
Architects.
Approved
by
Owners.
Appreciated
by
Tenants.

Form
Your
Own
Opinion.

THE LUXFER PRISM CO., Limited
98-100 KING STREET WEST, TORONTO