

Black Watch

Black Plug
The Chewing Tobacco
of Quality.



2271

HANDLED BY ALL THE
WHOLESALE TRADE

LOVELL'S GAZETTEER.

The new edition of Lovell's Gazetteer of the Dominion of Canada is a fascinating volume. Over a dozen years have passed since the third (1895) edition of this valuable work was published. These have been the most momentous in Canada's history. In them, as the prefatory note reminds us, the progress of the country has been phenomenally rapid. The completion of the Canadian Pacific Railway in 1886 opened up to immigration an immense territory. Manitoba, Alberta, Saskatchewan, besides the Northwest and British Columbia, have all made astonishing progress. Settlements and towns have sprung up on all sides; mineral wealth, hitherto scarcely dreamed of, has been exploited, and its value added to the ever-increasing wealth of the country; and wheat-growing has expanded to such an extent that this year the estimated crop will amount to 120,000,000 bushels. Surveys of greater accuracy have been made, and rough explorations carried on far towards, and even beyond, the Arctic Circle. The Mackenzie River basin has been carefully examined as to its utility; the vast dis-

trict of the Yukon, bordering on Alaska and north of British Columbia, has been explored and partly settled. Places where once the Arctic traveller won renown have become not merely the scene of the ordinary season's labors of geological survey officers, but have actually in some cases learned to know the whistle of the steamer, the hoe of the husbandman, the visit of the census taker. Disputed questions, such as the actual size, nature and contour of many lakes have been settled, harbors and channels have been vastly improved, railways have extraordinarily increased in mileage and traffic, old cities have grown, villages have become towns and towns have overrun their suburbs. In the present edition of the Gazetteer attention has been given to all these points. The arrangement of the work is admirable. In nearly every case the name of the place is followed by that of the country in which it

CANADIAN OFFICE & SCHOOL FURNITURE CO. LIMITED
PRESTON, ONT.

OFFICE, SCHOOL, CHURCH, & LODGE FURNITURE

FINE BANK, OFFICE, COURT HOUSE AND DRUG STORE FITTINGS A SPECIALTY

SEND FOR CATALOGUE

ATLAS ASSURANCE CO., Limited

OF LONDON ENGLAND

Subscribed Capital - - \$11,000,000

Total Security for Policyholders amounts to Twenty-four Million Dollars. Claims paid exceed One Hundred and Thirty Million Dollars.

The Company's guiding principles have ever been Caution and Liberality. Conservative selection of the risks accepted and Liberal treatment when they burn.

AGENTS—i.e., Real Agents who Work—wanted in unrepresented districts

North-West Department:

R. W. DOUGLAS, Local Manager, 316-317 Nanton Bldg., Cor. Main and Postage Ave., Winnipeg.

Toronto Department:

SMITH & MCKENZIE, General Agents, 24 Toronto Street, Toronto.

Head Office for Canada—MONTREAL

MATTHEW C. HINSHAW,
Branch Manager.

is situated, and then the province. The nearest railway point is then given, and the name of the railway by which, by consulting the table of routes, the traveller can ascertain how it can be reached. The nearest seaport is also given where trade of any importance is carried on. Other valuable information consists of the denominations of the various churches in each place, the number of stores, the hotels, banks, express offices, telegraph offices, factories and other industries, as well as the population, either from the census of 1901, or from a careful estimate of some reliable local authority. The Gazetteer is a striking testimony to the development and building-up of the Dominion, and in its preparation and design calls for nothing but unstinted praise. Lovell's Gazetteer of Canada, John Lovell & Son, Montreal.

THE EXCELSIOR LIFE INSURANCE CO.

Head Office: 59-61 Victoria St., Toronto

Established 1889

Insurance in force - - \$11,322,477.70
Assets - - 1,411,330.38

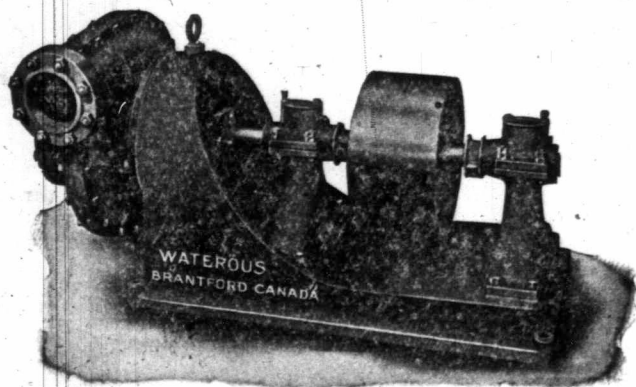
A Company possessing features particularly attractive to insurers and agents.
No better Company to insure in No better Company to represent.

E. MARSHALL,
Gen'l Manager

D. FASKEN,
President

The PUMP For PAPER and PULP MILLS

We Manufacture a full line of
PULP MILL MACHINERY



WRITE FOR SPECIAL CATALOGS

The Waterous Engine Works Co., Ltd.
BRANTFORD, CANADA

Original Charter 1854

The Home Bank of Canada

Head Office TORONTO 8 King St. West

Branches in Toronto

78 Church Street
Corner Queen West and Bathurst
Corner Bloor West and Bathurst
Corner Queen East and Ontario
20 Dundas Street West
West Toronto

Branch Offices in Ontario

London	St. Thomas
Walkerville	Cannington
Alliston	Sandwich
Ilderton	Thorndale
Melbourne	Belle River
Tecumseh	Everett
Lawrence Station	

Winnipeg, Man. Fernie, B.C.

JAMES MASON, General Manager