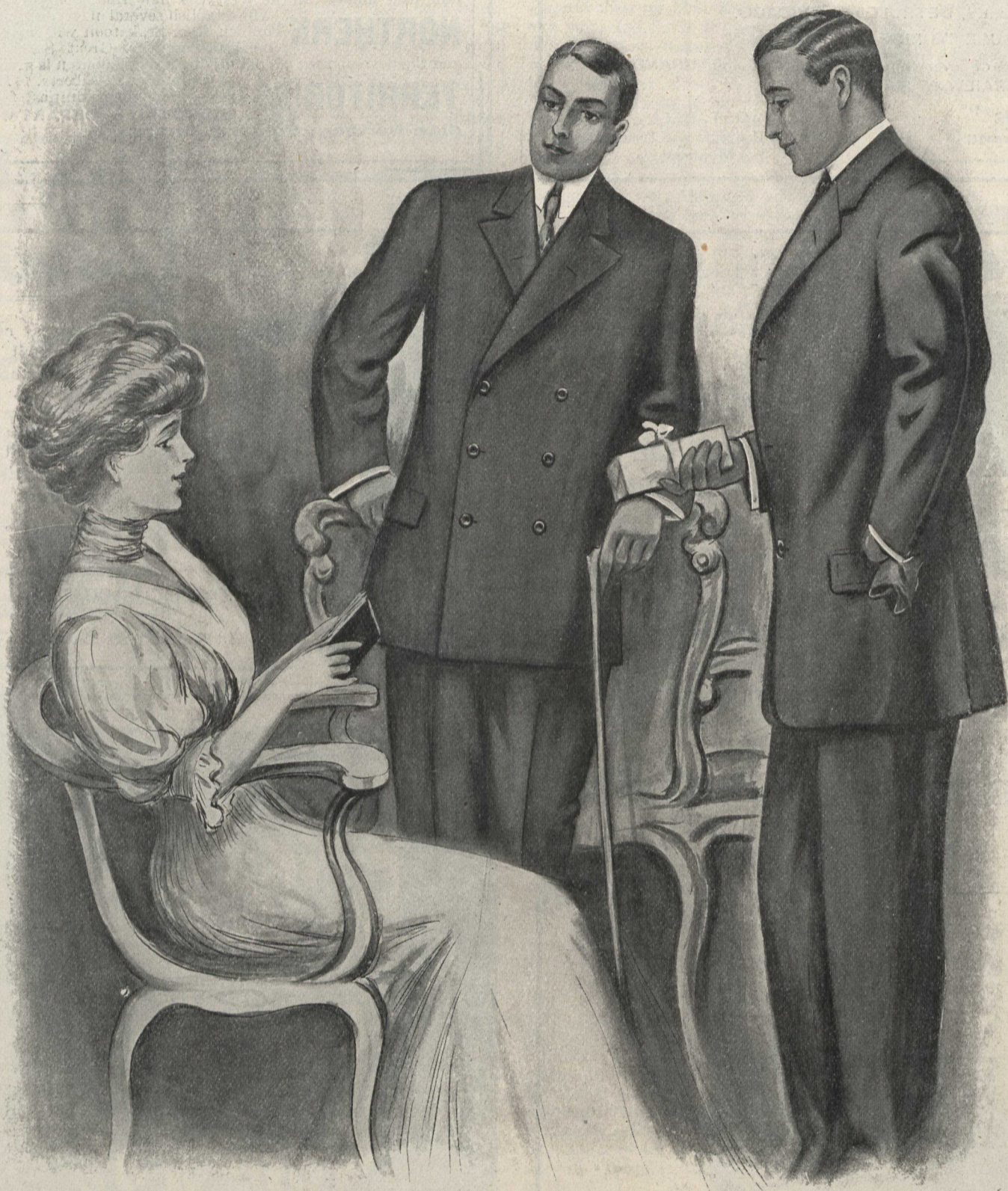


# Semi-ready Tailoring



☐ Semi-ready Stores may not carry the largest stock of clothes. ☐ We show better variety with half the stock carried by a ready-made clothier. "Largest" is not an attractive superlative. ☐ One beauty of the Semi-ready physique type system is that any store can get along with half the stock and half the number of salesmen and yet do twice the business. And on top of that we back up Semi-ready with 200 cloth patterns of suits we make to measure and tailor to order in four days. That's our Special Order Department, where we make clothes for men at \$18, \$20 and up.

## Semi-Ready Tailoring

81 YONGE STREET, TORONTO

Head Offices: Semi-ready Limited, Montreal

