

or five segments, glossy black; spot under base of wings, spot at base of posterior coxa, black; remainder of body resinous-yellow, except the sheath, which is very dark, around the mouth-parts, which is very light, and the posterior tarsi, which are darker above. Stigma light at base; veins brownish, lighter at base of wings. Wings iridescent.

Male.—Length 5.75 mm. Differs from the female in being less robust, in having the clypeus more widely excavated, in having the entire dorsal surface of the abdomen back to genital parts glossy black, and in having a larger spot of black at base of posterior coxa.

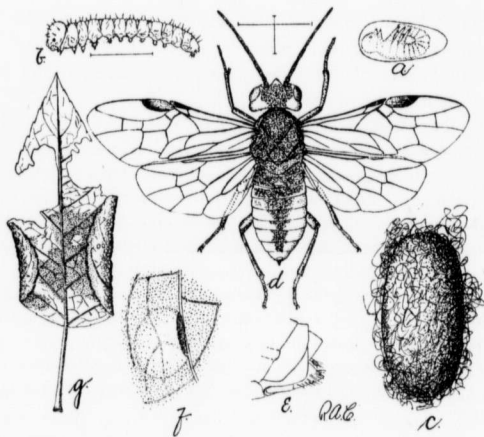


FIG. 6.

EXPLANATION OF FIGURES.

- a.—Egg, showing the nearly mature embryo.
- b.—Larva.
- c.—Cocoon.
- d.—Adult female sawfly.
- e.—Side view of extremity of abdomen of female.
- f.—Egg-pocket under epidermis.
- g.—Leaf affected by the species.