

Cabbage Moths. The same treatment destroys cabbage or tomato grubs as is used for potato beetles, but poisons should not be applied to plants that are ready to be eaten.

Plant Lice and Scale Insects, such as appear on cabbage plants and in some places on trees, are destroyed by emulsions.

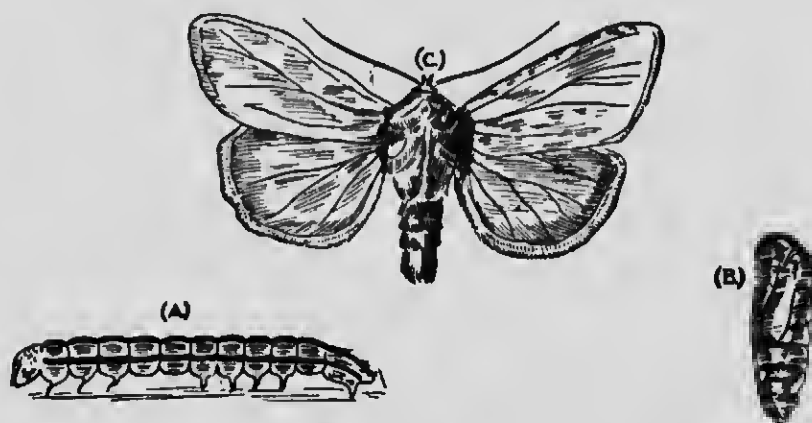


FIG. 74. THE CUTWORM. *a*, LARVA STAGE; *b*, PUPA STAGE; *c*, ADULT STAGE.

Cutworms. These insects attack both farm and garden plants and are, perhaps, the most destructive insect pests on the prairie. They are bad in dry climates and in dry years, and usually on spring plowing of sod. The cutworm is a dark, grey worm, faintly striped, and has a soft body. The adult form is a moth. It lays its eggs on grass stems in the summer. When the eggs hatch the larvae fall and burrow down into the soil, where they continue to grow until the frost of winter. In