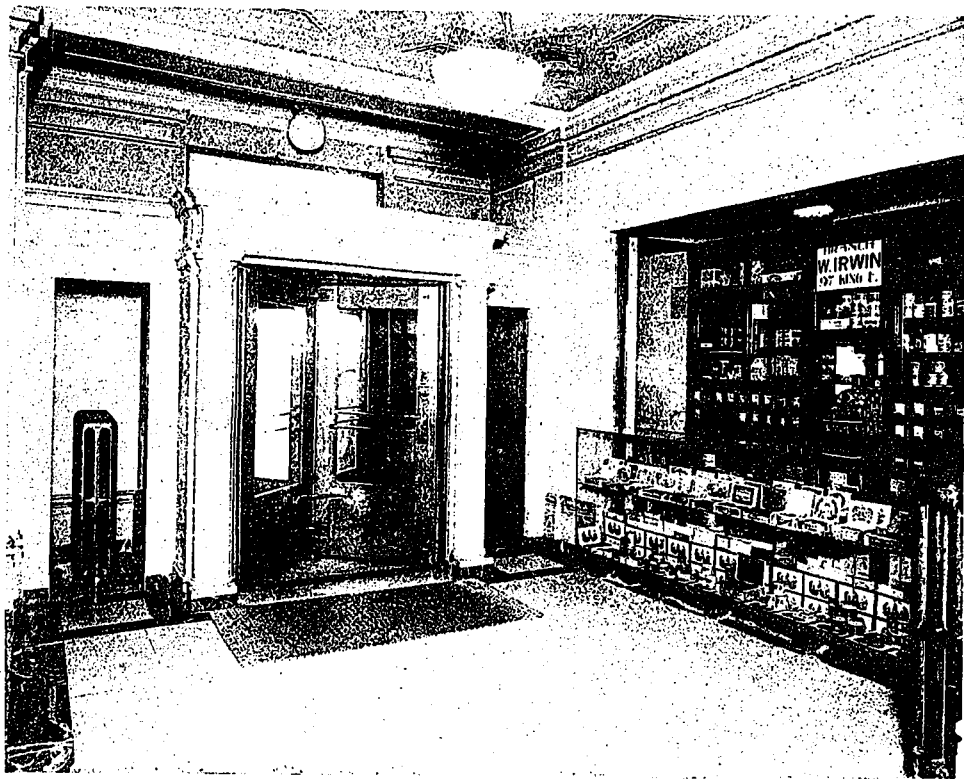


There is a complete fire appliance system, water lines, hose and racks, pumps, 5,000 gallon tank in roof house, and exit lights to all staircase door openings, fire alarm system, Siamese hose connections for fire engines on both Court and Church streets.

The building is heated throughout by steam, and the radiating surface is so designed and distributed as to heat all parts of the building to 70 degrees in 10 degrees below zero weather.

The first floor and portion of the basement are heated by means of heaters and reheaters with air forced through by a fan as hereinbefore described. All return valves are of the vacuum

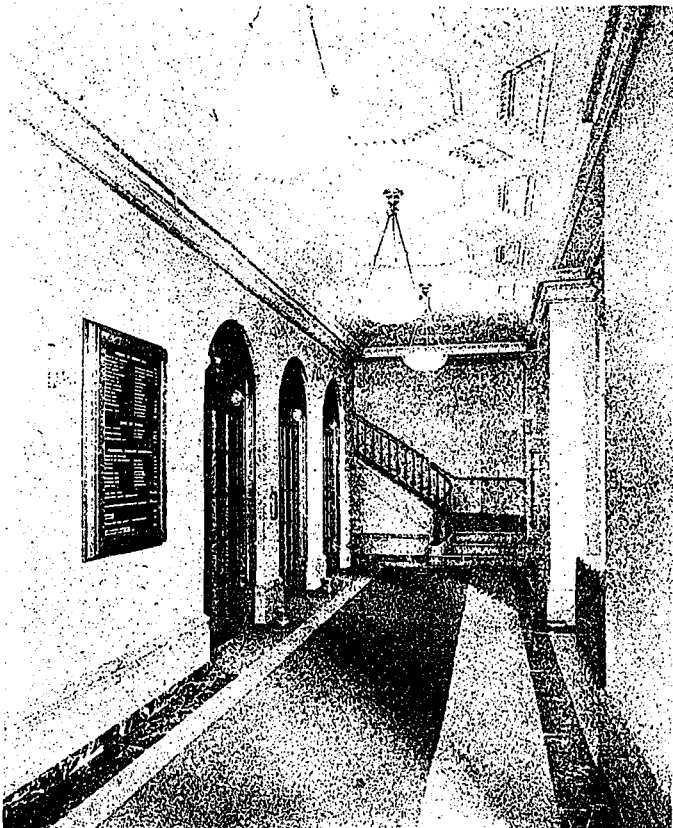


INTERIOR VIEW OF MAIN ENTRANCE.

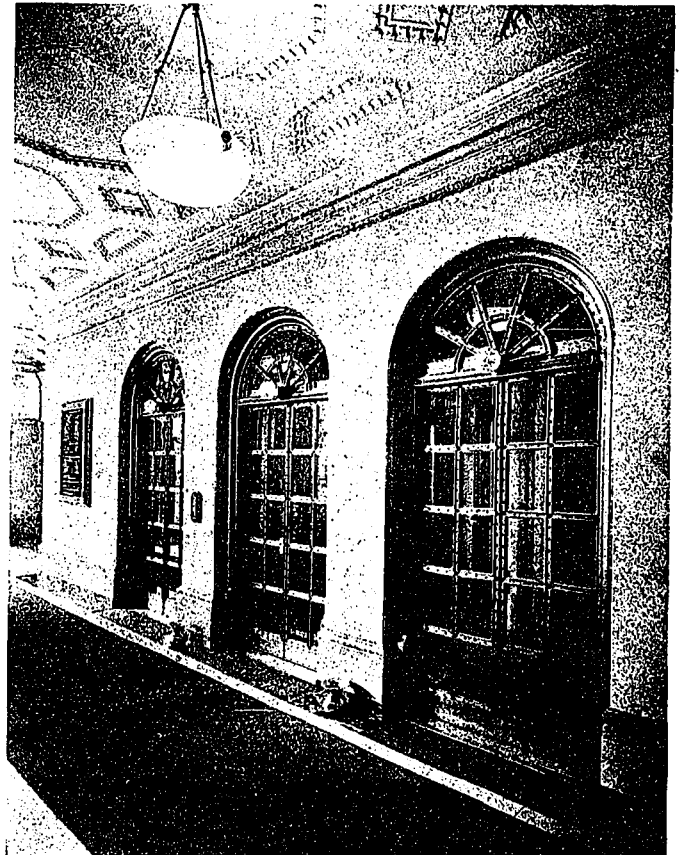
type. The heat in the board room on the eighth floor and the banking room on the first floor is controlled by temperature regulation.

The electrical layout was given most particular consideration. In the arrangement of lighting for the general offices throughout

the building, the lighting fixtures were designed and calculated to give sufficient and splendidly distributed light throughout the various rooms, so that none of the clerical force have been obliged to use portable desk lamps. Whilst this building is wired to base receptacles, none of them are used.



VIEW OF MAIN ENTRANCE HALLWAY.



VIEW OF ELEVATOR ENTRANCES, MAIN FLOOR.