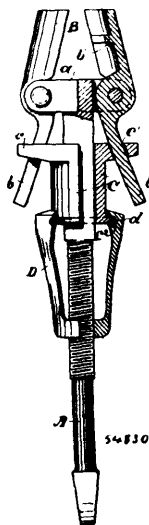


No. 54,830. Wrench. (*Clé à écrou.*)

Robert McDonald, Magalia, California, U.S.A., 3rd February, 1897; 6 years. (Filed 4th December, 1896.)

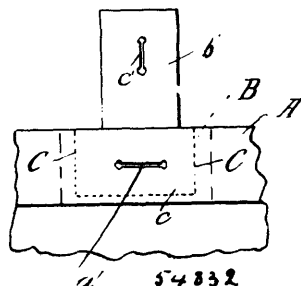
Claim.—1st. A wrench, comprising a stock having pivoted to one end thereof opposing jaws provided with divergent extensions behind their pivotal centres, a sleeve adapted to slide upon the stock and engaging said extensions whereby the latter are moved to or from each other to cause the jaws to separate or approach, and means on the stock for sliding the sleeve. 2nd. A wrench, comprising a stock having pivoted to one end thereof opposing jaws provided with divergent extensions behind their pivotal centres, a sleeve adapted to slide upon the stock and engaging said extensions whereby the latter are moved to or from each other to cause the jaws to separate or approach, and a clutch nut threaded on the stock and engaging the sleeve for adjusting it on the stock. 3rd. A wrench, comprising a stock having pivoted to one end thereof opposing jaws provided with divergent extensions behind their pivotal centres, a sleeve adapted to slide upon the stock and engaging said extensions whereby the latter are moved to or from each other to cause the jaws to separate or approach and a clutch nut threaded on the stock and engaging the sleeve to adjust it, said nut having a grooved end engaging freely a flange on the sleeve. 4th. A wrench, comprising a stock having a cross-foot, opposing jaws pivoted in opposite ends of said foot, and having rearwardly projecting divergent extensions, a sleeve slidable upon the stock and having a cross-foot with holes engaging said extensions whereby the jaws are separated and caused to approach, and means on the stock for sliding said sleeve. 5th. A wrench, comprising a stock having a cross-foot, opposing jaws pivoted in opposite ends of said foot and having rearwardly projecting divergent extensions, a sleeve slidable upon the stock and having a cross-foot with holes engaging said extensions whereby the jaws are separated and caused to approach and means for sliding said sleeve on the stock, consisting of a clutch nut threaded on the stock and engaging said sleeve. 6th. A wrench, consisting of a stock, opposing socket jaws pivoted thereto and having rearwardly projecting divergent extensions, a sleeve slidable on the stock and engaging said extensions to swing the jaws, a clutch nut on the stock engaging the sleeve to adjust it, and a limiting stop in the socket jaw.

No. 54,831. Pencil Sharpener. (*Taille-crayon.*)

Andrew Prader, Spokane, Washington, U.S.A., 3rd February, 1897; 6 years. (Filed 7th December, 1896.)

Claim.—1st. A pencil holder and sharpener, consisting of a slotted body portion conically chambered to receive the end of the pencil to be sharpened and adapted to be carried on the non-sharpened end, a knife movably and removably seated in said body portion, said knife having its back tapered or bevelled to form a cam edge, and having also a projection at its heel end which has a bearing or abutment in the said body portion, and the sliding bands or rings which bear upon the said cam edge, whereby the adjustment of the said knife may be varied, substantially as specified. 2nd. The pencil sharpener consisting of the conically chambered body portion slotted at *b*, and having the intumed bevelled and tapered lip *d*, the opposite surface *c*, the notched aperture *g*², and niche *h*, the knife having the lateral projection at the end opposite the point, and adapted to fit the notch and aperture on said body portion, the point of said

knife being adapted to engage the niche *h*, and the slidable rings or bands which adjustably secure said knife, substantially as specified. 3rd. In a pencil sharpener, the combination of the slotted sleeve, the body portion adapted to fit said sleeve and which is conically chambered, the knife movably and removably held in said body portion, said knife having its back bevelled or tapered to form a cam edge and at its heel portion a projection which has a bearing or abutment in said body portion, and the two sliding bands or rings which slidably engage said cam edge, one at the point and one at the heel portion thereof, substantially as and for the purpose specified.

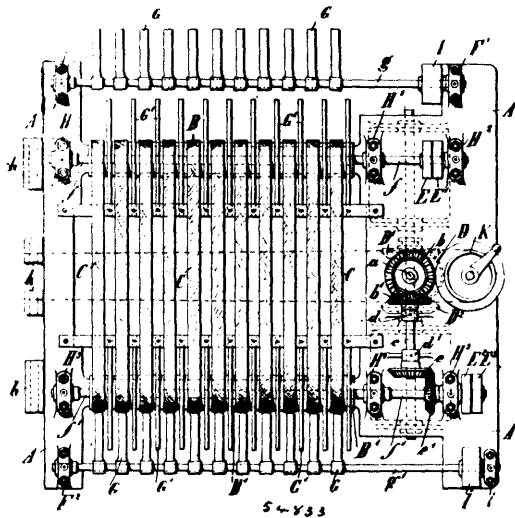
No. 54,832. Shirt Neck-Band. (*Bande de chemise.*)

George W. Delahey, Pembroke, Ontario, Canada, 3rd February, 1897; 6 years. (Filed 9th December, 1896.)

Claim.—1st. The combination, with a shirt neck-band provided with a stud-hole, of a piece of textile material secured to the said band behind the stud-hole, substantially as set forth. 2nd. The combination, with a shirt neck-band provided with a stud-hole, of a piece of textile material secured to the said band behind the stud-hole by rows of stitches at its ends and bottom, substantially as set forth. 3rd. The combination, with a shirt neck-band provided with a stud-hole, of a piece of textile material secured to the said band behind the stud-hole and provided with a projecting flap having a hole for engaging with the front portion of the stud, substantially as set forth.

No. 54,833. Reaping Machine Delivering Device.

(*Appareil de décharge pour moissonneuses.*)



Otto Maychrzak, Berlin, Prussia, 3rd February, 1897; 6 years. (Filed 11th January, 1897.)

Claim.—1st. Delivering device for reaping machines, comprising an endless transport band running over rollers, at the one end of which is a comb-like rake through the openings of which extends a second comb adapted to rotate and take with its teeth the corn which is deposited by the transport band upon the fixed rake. 2nd. In a delivery device as under claim 1, the arrangement of the rakes on both ends of the transport band and a coupling device, by which only one of these deliverers is operated and simultaneously the corresponding direction of movement is given to the transport band. 3rd. In place of the endless transport bands a plane carried by two cranked shafts and operated in swinging movements, upon which plane are arranged on the upper side points, and which conduct the thereon falling corn to the deliverers described in claims 1 and 2. 4th. A delivering device for reaping machines, comprising vertical standing reacher-shafts provided with horizontal cross-arms which conduct the corn to an endless transport band provided with reacher-arms and arranged vertically behind it, which band delivers the corn laterally. 5th. A delivery arrangement for