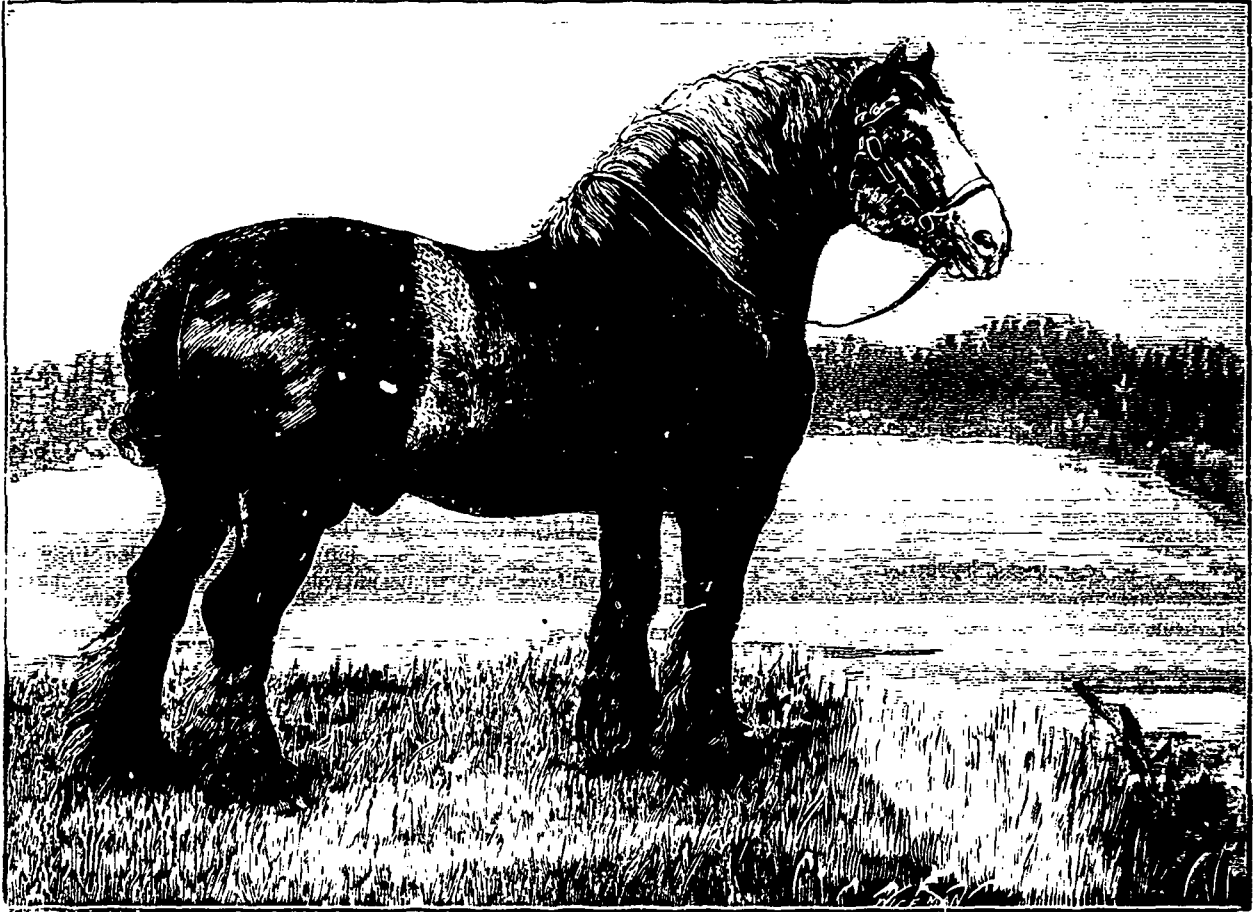


**MARKETS.**—Queer things are market-prices here ! by August 1st new potatoes were selling at 35c a bushel in the Montreal retail market, and on the following day 70c was the price at Sorel.

**CLOVER-HAY.**—M. Crépeau, a highly respectable farmer and dealer, informs me that on his farm, near Sorel, he has tried the plan of cutting clover when first in bloom, and it answered so well, that he will never, unless let or hindered by the weather, pursue any other method. Three years ago, having a piece of clover in bloom on the 15th June, and fearing, from its luxuriance, that it would go down and rot, he, much to the astonishment of his neighbours, cut it, and the next day, after breaking it out, got it into cock, carrying it

**STARLINGS.**—A plague of these birds, *vulgo*, black birds, is upon us. They divide their favours pretty equally between my cats and my neighbour's wheat, both of which crops are nearly ripe. In fact, the wheat is quite fit to out, but the hay is not finished, and I fear the poor wheat will have to wait until the bran is twice as thick as it ought to be before it is cut. I gathered a few ears, with the whole length of straw, on Sunday, August 3rd, and when the wheat is supposed to be fit for the scythe, I shall rub out some grain and compare the quality with that I have reserved.

**OATS.**—Strange to say, the English white Tartar oats I imported this spring are not in ear, but the black Tartars from Montreal, my main crop, are out in full ear ! Both



ENGLISH SHIRE-HORSE. HONEST TOM.

into the barn on the third day. On this hay, some of the grain-crop was put, so that it did not come into use until the spring, but when it was offered to the animals, they were enchanted with its flavour, and appeared disgusted with their old friend, timothy.

As I said before, I do not agree with those who shake out clover however green it may be, on account of the danger of losing the leaf; but in every other respect, M. Crépeau's performance has my unqualified approval.

**COLORADO BEETLE.**—This abomination has let us off very easily this year. There were a good many at first, but one good dressing of Paris green (one dessert spoonful to 2½ gal. of water) had the effect of putting a stop to their appetites. A few remain, but their work is insignificant, and the potatoes are too far advanced to be much injured by them.

sorts sown the same day, in the same field, which makes it still more wonderful.

**BUCKWHEAT.**—This crop looks very bad—short and in bloom prematurely. The seed was evidently damaged by heating, and I was a fool to sow it.

ARTHUR R. JENNER FOST.

#### Cheap Sheep Barn.

Can you inform me as to the best way to build a shed for housing about 300 sheep—I do not want to put up a permanent building, but something only temporary for the winter? J. S. W. Philadelphia, Pa. [This inquiry is too indefinite for us to give a distinct plan. If you wish the cheapest kind of shelter, and have the materials at hand, you may set posts two feet deep and six feet apart, on which to nail