



## Would Make Ideal Christmas Presents! CHIPPENDALE COLONIAL GLASSWARE

Simple in its beauty, and beautiful in its simplicity.

The highest exemplification of Colonial Art in Table Glassware.—simple in its beauty and beautiful in its simplicity. It adorns the tables of people of refinement and taste.

The Chippendale Design—Made in all the various articles for table use, also Candelsticks, Vases, and many other things. The one Colonial Glassware that is distinctly different from all others.

It has many features which separate it from others, advantages which are peculiarly its own:—(1) Its straight lines. (2) Its squared handles. (3) Its simple beauty. (4) Its superior strength. (5) Its great brilliancy. (6) Its amazing economy.

Krys-Tol is the product of a newly discovered process of annealing, a method of tempering glass at a high degree of heat heretofore believed to be impossible. By this means the public may now buy the same beautiful finish and irradiant brilliancy of the most expensive and high grade imported crystal ware of about one-twentieth the cost.

Aside from reducing the cost to an astonishingly low figure, the new process of manufacture not only adds to the brilliancy of the ware in a remarkable degree but also serves to increase its strength, making Chippendale Krys-Tol the most sturdy, durable ware of the kind ever produced. It withstands every use, and resists every abuse—is less liable to breakage and the incessant cost of constant renewals.

For Gift Purposes—Imagine a beautiful crystal ware so low in price that it is readily in the reach of all, and yet so beautiful in design that one would never associate it with any idea of "cheapness." For this reason Chippendale "Krys-Tol" is admirably adapted for Christmas, New Year, wedding and birthday gifts, etc. Have no fear of cheapening the sentiment of your gift—rather will it prove your good taste in choosing and good sense in giving.

Look for the trade-mark "Krys-Tol" which is in the glass on every piece. Look for it—take no other. Else you will miss much, and gain—nothing.



Quart Squat Jug . . . . .45c. each



Footed Jelly Dishes, 4 1/2 inch, 20c. ea. Fruit Sherbet or Sundae Dish, 25c. ea.



Half Gallon Jug . . . . .80c. each



Whipped Cream and Plate . . .80c. set



Sugar Dish . . . . .30c. each



Scalloped Rim Nappy, 9 inch, 55c. ea.



Eight Inch Nappy . . . . .50c. each



Four Piece TABLE SET 90c. Complete.

Cream Jug . . . . .20c. each

Spoon Stand . . . . .20c. each

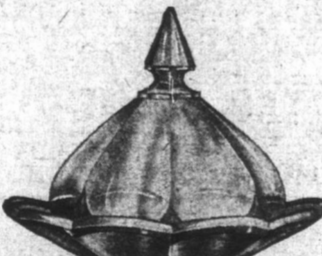


Handled Olive Dish . . . . .15c. each

Footed Sherbet Dish . . . . .10c. each



Oval Pickle Dish, 7 1/2 inch, 20c. each



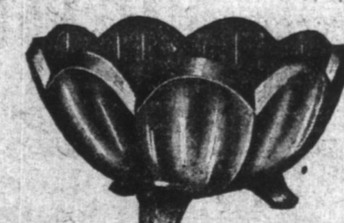
Butter Dish . . . . .30c. each



Low Foot Bowl, 8 inch . . .90c. each



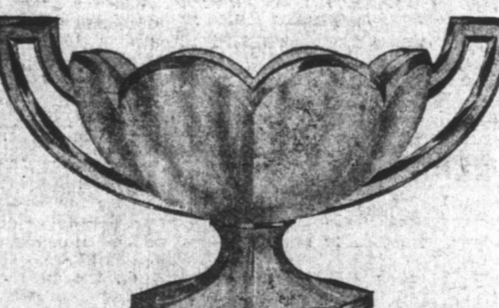
Cake Stand, 9 inch . . . \$1.00 each



Preserve Dish, 7 inch . . .40c. each



Deep Fruit Bowl . . . . .45c. each



Oval Preserve Dish, 8 inch, 30c. each

CROCKERYWARE  
DEPARTMENT.

ALL MAIL  
ORDERS  
PROMPTLY FILLED.

# THE ROYAL STORES LIMITED

CROCKERYWARE  
DEPARTMENT.

ALL MAIL  
ORDERS  
PROMPTLY FILLED.

### The Power of Water.

When a swimmer slips the water forcibly with his hand, or takes a back dive from a pier and lands squarely on his back, he realizes that the unstable liquid offers not a little resistance. Yet it is surprising to learn what water will do under certain conditions.

A stream from a fireman's hose will knock a man down. The jet from a nozzle used in placer mining, in the west cuts away a large piece of land in a day, boys with great boulders as if they were pebbles, and would shoot a man over the country as though he were a projectile from a cannon. There is a story of an easterner of great strength who wagered that he could knock a hole through the jet of

one of these nozzles with a sledge hammer. He lifted his arms, swung his sledge, and came down on the ten-inch stream with a force that would have dented a blacksmith's anvil. But the jet never penetrated, whisked the big hammer out of the man's hands, and tossed it many feet away into the debris of gold bearing gravel. A cavalryman thought that he would have an easy job in cutting a two inch stream with his sword. He made the attempt at a power plant in Colorado. It was a valiant attempt, but the result was that his sword was shattered in two and his wrist broken. A little thinner jet of water descended sixteen hundred feet to a manufactory at Grenoble, and travelling at the moderate speed of one hundred yards a second, fractures the best Toledo blades.

The anniversary of the death of Jenny Lind calls to mind a most lovely and charming personality. The infirmary at Norwich, named after her, "The Jenny Lind Infirmary," was founded fifty-eight years ago by her, and she was one of the sweetest singers

that "ever poured upon the world a flood of harmony," and among other of the great men of her time who appreciated her at her right value was Mendelssohn, who said of her, "She is as great an artist as ever lived, and the greatest I have known." For a

long time she lived in Kensington, at Clairville Grove, in a pretty one-story cottage, over which grew a fine magnolia. A critic wrote of her, after she had sung for some years in grand opera; that if she had not been the greatest singer in the world, she would have been the greatest actress."



## The Popular London Dry Gin is VICKERS' GIN



D. O. ROBLIN, Toronto  
Canadian Agent

J. JACKSON, St. John's,  
Resident Agent.

## Cable News.

Special Evening Telegram.

LONDON, Dec. 20.—The King, to-night, unexpectedly summoned the Prime Minister to London from Edinburgh. The nature of the conference which His Majesty is to have with Mr. Asquith is of course unknown, but it is likely that general political aspect will be gone quite thoroughly into. King George has taken a marked interest into the general election which has just ended. The returns of the three constituencies the polling of which yesterday brought to a close the general elections for the first parliament of King George, were announced to-day. Jas. Gilhooly, who as an O'Brienite, long represented the west division of Cork County, was one of the returned, adding one of the Independent Nationalists total. Gilhooly defeated D. O'Leary, Nationalist, in the South Division of Kilkeny County. Mr. Keating, Nationalist, was another re-elected.

Special Evening Telegram.

NEW YORK, Dec. 20.—Justice dealt the Black hand a quick body blow in E. Brooklyn to-day with conviction in less than six hours of a woman kidnapper. She is Maria Ruffalo, a first time Italian. The woman of not more than thirty years. A jury in the County Court after only 10 mins. deliberation found her guilty of abetting the kidnapping of little Michael Pizzo and Giuseppe Longo. The penalty is not less than five years and not more than fifty in State prison. Sentence will be passed on Tuesday next. The woman sat stolidly through the proceedings and flatly denied any complicity in the case. It was in her apartments, however, that the Longo boy was found and the other evidence was overwhelmingly damaging, including the child's own story, as told on the stand. When the verdict was announced Judge Favocet expressed gratification and pronounced it the severest blow to the Black hand since he has been on the bench.

Special to Evening Telegram.

NEW YORK, Dec. 20.—Ambrose Wilson, a young Jersey City business man, returned to his boarding house on Johnson Avenue early to-day, after a belated evening's visit with friends and tumbled head first over the body of his father in the hallway. The old man's body was cold and he had been dead apparently for several hours. Examination showed that he had been violently beaten with some heavy implement and finally killed by a stab in the neck which severed the jugular vein. The police after a hurried investigation arrested August Miller and his wife Jane, owners of the house. The two Wilsons, father and son, had boarded with them for several years. The police lodged a charge of murder against Miller and directed that his wife be held a witness.

Special to Evening Telegram.

PARIS, Dec. 20.—The Government to-day successfully maintained its position against the attacks of the Socialists, under the leadership of M. Jaures, who demanded the reinstatement of all the railroad employees, who were dismissed in connection with the recent strike. The Government took the position that it was impossible to extend general reinstatement to the men dismissed for insubordination and violence, but was ready to consider the merits of individual cases. The question came up in the Chamber of Deputies and the Chamber sustained the Government.

Special to Evening Telegram.

LAS PALMAS, Canary Is., Dec. 20.—Some anxiety is felt for the safety of the Woermann steamship line steamer, Ingerbert and Irma Woermann. The latter started out yesterday in the teeth of a terrible gale to succor her sister ship which had been sighted 12 miles off the coast, displaying signals of distress and indicating that her engine had broken down. Since then no word has been received from either of the liners, and they have not been sighted by incoming steamers.

Special Evening Telegram.

CARDIFF, Wales, Dec. 20.—Freddie Welsh, the lightweight champion of England, won the fight with Jim Driscoll, the featherweight champion, in the tenth round to-night on a foul.

COLDS CAUSE HEADACHE

LAXATIVE BROMO Quinine, the world wide Cold and Grip remedy removes cause. Call for full name. Look for signature E. W. GROVE, 25c.

Here and There.

Obtain a bottle of Stafford's Ginger Wine for Xmas.—dec.6,tf.

Stafford's Liniment for Swollen Joints, Etc.—dec.2,tf.

The Clementine arrived at Oporto on Monday last with fish from A. Goodridge & Sons. Capt. Tucker is in command.

Have you seen those Enamelled Vest Buttons at TRAPNELL'S? Just the thing for your gentleman friend this Xmas.—dec.12,tf.

See us to-day about that Piano or Organ. Not too late to get in home before Xmas. CHESLEY WOODS, dec.21,4t.

PRINCE'S RINK.—Season tickets may now be obtained from the undersigned at the usual prices. F. W. DONNELLY, Secy.—dec.20,4t.

THE WHOLE HOLIDAYS.—Yesterday's Royal Gazette announced that Monday next the 26th inst., and Monday the 2nd January, 1911, will be observed as public and general holidays.

A Sterling Silver Photo Frame makes an acceptable gift for anybody. Go to TRAPNELL'S for choice selection.—dec.15,4t.

## Still Alive with Bullet Thro' Brain.

North Bay, Ont., Dec. 14.—A settler's cabin on the south shore of Lake Nipissing was the scene of a shooting affray on Sunday night. News of the tragedy reached North Bay yesterday in the form of a sinister rumor of foul play. When Provincial Officer McKee and a press representative who had driven to the scene, forty miles across the lake, they found the victim, Mrs. J. Fetterly, who was still alive. A revolver bullet had entered beneath the jaw and it is said passed completely through head and brain, inflicting injuries which should have caused instantaneous death. Fetterly's story, which is corroborated by other inmates of the house, is to the effect that his wife quarreled with a man who was helping him on the farm, causing him to leave, and the latter quarreled with his step-son, and he (Fetterly) remonstrated with her for driving the people away. Words followed and she picked up the revolver and ran into the yard where she shot herself. The woman is in a delicate condition and has five small children. Her domestic life has not been conducive to happiness but there is no evidence that the tragedy means anything but suicide despite rumor to the contrary. The dying woman asserts that she shot herself and exonerates her husband. Notwithstanding her terrible injury the woman is able to talk and sit up in bed, showing vitality of a most remarkable nature.

## New Ship to Aid Doctor Grenfell.

New York, Dec. 12.—Dr. Wilfrid T. Grenfell, missionary to the fishermen on the coast of Labrador, has arrived in this city from Palm Beach, Fla., where he went on the invitation of George B. Cluett to consult about plans for building a schooner which Mr. Cluett has offered to Dr. Grenfell. This will cost \$25,000 and will be used to convey supplies to the Grenfell missions from New York and Boston. Dr. Grenfell is accompanied by Mrs. Grenfell and Wilfrid T. Grenfell, Jr., two and one-half months old. They are on their way to England to spend Christmas at Parkdale with the aged mother of the missionary.

## Christmas Good Cheer!

### POULTRY:

The very finest P.E.I. Grain Fed Birds, dressed and drawn.

**TURKEYS, DUCKS, CHICKEN, CEESE.**

25 cases just in by rail and ready for delivery now or any time this week.

Xmas Novelties, Filled with Chocolates:

Tea Pots, Jugs, Basins, Cups, Mugs, Motor Cars, etc. Tom Smith's Crackers.

### TABLE DAINTIES.

English Plum Puddings, 20c, 50c, 75c. Red and Black Currant Jelly. Cranberry Sauce, Grated Pineapple. Plasmon Custard Powders. Honey in blis, 20c. and 35c. English Mince Meat in Glass. English Grown Peaches in Glass. English Grown Pears in Glass. Asparagus in Glass, Stuffed Olives.

### FEARMAN'S BACON.

FRUITS (fresh). Oranges—Florida. Oranges—Valencia. Lemons—Palermo. Grapes—Almeria. Apples—Choicest Table.

### A FEW CHEAP LINES.

Seedless Raisins, 1 lb. pkg. . . . .10c. Table Jellies, 3 1/2 pint, 3c. . . . .50c. doz. Table Jellies, 1 pint, 5c. . . . .35c. doz. Worcester Sauce, 3 1/2 pt. bl. . . . .7c. Pickles, 40 oz. bl. . . . .25c. Pickles, 60 oz. bl. . . . .35c. Syrups—Pink's . . . . .15c. Lime Juice . . . . .12c. Soups, asstd., per tin . . . . .7c.

FRESH EGGS, FRESH RABBITS, FRESH PARTRIDGE.

Please send in your orders early so as to ensure satisfactory delivery.

## T. J. EDENS,

Phone 411 and 412a.