

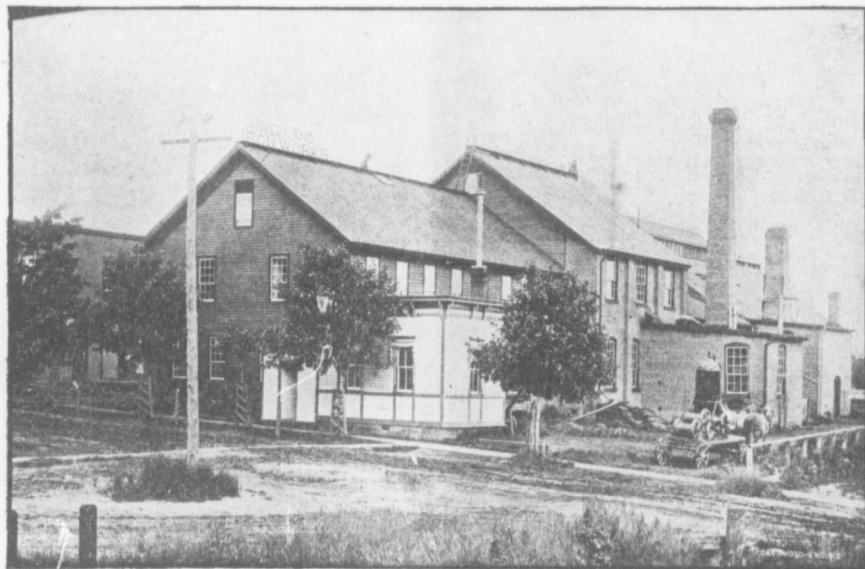
M. BEATTY & SONS, FOUNDRY AND MACHINE SHOPS.

One of the principal, in fact the leading industry of Welland, and which has been a potent factor in the town's business development, is that of Messrs. M. Beatty & Sons' foundry and machine shop. This is not only from the fact that it furnishes employment to from sixty to a hundred skilled mechanics, but that its products permeates every section of the Dominion, and even to Newfoundland. The plant is located on North Main Street, north of the Wel-

land river and embraces something like an acre of ground, extending from North Main Street to Seely Street. This very prosperous enterprise was founded in 1862, by the late Matthew Beatty. It primarily was but a small affair as compared with that of the present, its manufacturing capacity being confined to very limited quarters. With characteristic perseverance, combined with his indomitable will and the assistance of his son, Mr. W. L. Beatty, who

shortly after its installation, became associated in the enterprise, the business increased to such an extent as to require additional facilities, culminating in the present plant, which has been constantly enlarged and improved, until at present it is one of the best equipped plants of its character in the Dominion. Some years since Messrs. H. L. and A. O. Beatty, sons of the founder, were admitted to membership in the firm, the senior continuing in active association

lower floor for offices, and a designing room overhead, adjoining which, and connected therewith, is a two-story structure, 45x100, the lower story being utilized as a machine shop, and the floor above for wood working and general purposes. Connected with the machine shop, and separated therefrom by a department for the storage of castings, is a one-story foundry building, 45x100. Across an area or driveway, the end fronting on North Main Street, is a two-story structure, 30x60, utilized for storage and a paint shop. Just beyond is a blacksmith shop, 30x40, together with a pattern house, 40x50, and on the opposite side of Seely Street is another building, 35x40, devoted to general utility purposes. Further east, and bordering the canal is a new building, 25x40, with a wing, 25x30, devoted to the manufacture of boilers and steel dredge hulls. All of the several departments are thoroughly fitted with all



CUT OF M. BEATTY & SONS' FOUNDRY, TAKEN IN 1892.

land river and embraces something like an acre of ground, extending from North Main Street to Seely Street. This very prosperous enterprise was founded in 1862, by the late Matthew Beatty. It primarily was but a small affair as compared with that of the present, its manufacturing capacity being confined to very limited quarters. With characteristic perseverance, combined with his indomitable will and the assistance of his son, Mr. W. L. Beatty, who

therewith for a time, and then retired from active service. The firm are manufacturers of contractor's plants, with every essential connected therewith, such as steam dredges, derricks, and shovels, also hoisting engines, horse power hoisters, sub-marine rock drilling machinery, suspension cable ways, centrifugal pumps, for water, sand and gold mining, and other contractor's machinery. The plant comprises a modern two-story office building, 20x30, the



RESIDENCE OF MR. W. L. BEATTY.

the latest and most improved machinery and tools for the manufacture and repair of contractor's machinery, the machine shop being equipped with lathes, planers, drills, shapers, keyseaters, etc., while the foundry contains a large cradle of several tons lifting power, and the blacksmith shop a steam hammer. Motive power is furnished by a 25 h.p. steam engine, which operates the steam hammer in the smith's shop as well. It also supplies steam for heating the various shops and office.