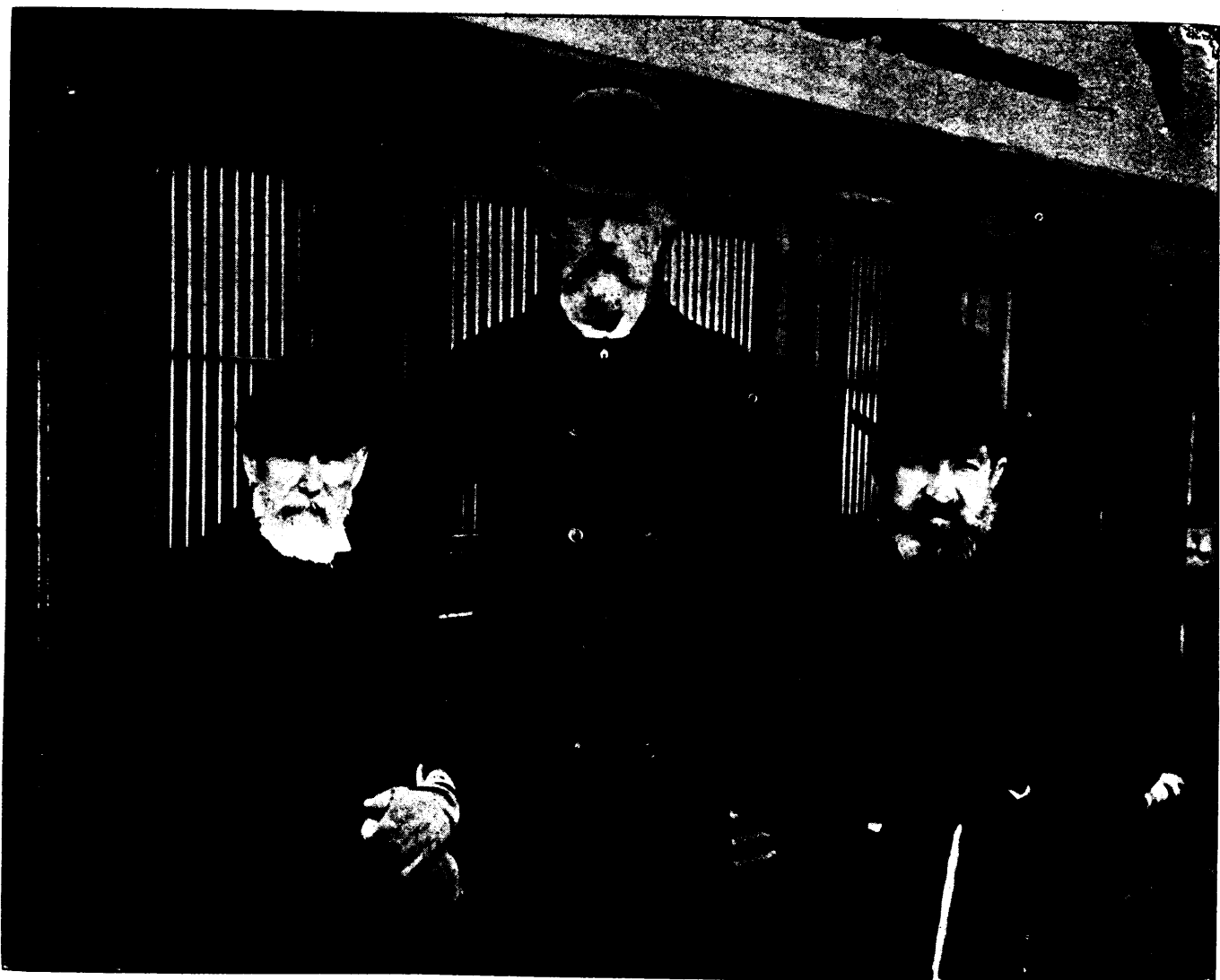


OFFICIAL INAUGURATION OF THE 27½ FOOT CHANNEL.

Views and groups from photographs taken by Wm. Notman & Son.



THE BEAVER LINE STEAMSHIP "LAKE ONTARIO," ACCOMPANYING THE EXCURSION.



ANDREW ALLAN, ESQ.,
OF THE ALLAN LINE OF ROYAL MAIL STEAMERS.

L. J. SEARGEANT, ESQ.,
OF THE GRAND TRUNK RAILWAY.

HON. A. W. OGILVIE,
SENATOR.

REPRESENTATIVES FROM THE SENATE, THE STEAMSHIP, AND THE RAILWAY.