

briefly spinose; vertex transverse; postocular spines present, pointed. Eyes moderately large, not protruding, occupying the anterior angles of head. Ocelli small, about equal in size to facets of eyes; anterior ocellus not overhanging; posterior ocelli opposite centres of eyes, slightly separated from their inner margins. Antennæ eight-segmented, general colour black; segment 2 paler at apex; segment 3 with two transverse brownish-yellow bands, one at base, the other at middle; segments 3-6 subclavate; segment 7 oblong, pedicellate; segment 8 small, fusiform. Mouth-cone slightly wider than long, reaching about four-fifths across prosternum, apex broadly rounded.

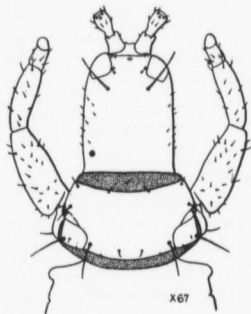


FIG. 18.—*Cryptothrips rectangularis*.

Prothorax about three-fourths as long as width of head, and (including coxæ) slightly more than twice as wide as long; usual spines all present, the two pairs near the posterior angles much the longest; anterior marginals very small. Pterothorax almost twice as wide as long, slightly wider than prothorax; sides subparallel. Wings lacking. Legs

nearly concolorous with body, tarsi somewhat lighter; anterior tarsus unarmed. Abdomen moderately stout, about one and one-half times as broad as pterothorax, widest at about segment 3, from which it tapers evenly to segment 6, and then rather abruptly to base of tube. Tube slightly less than three-fourths as long as head, tapering almost evenly from base to apex; surface not spinose.

Measurements: Total length, 2.74 mm.; head, length, .37 mm.; width, .26 mm.; prothorax, length, .20 mm.; width (including coxæ), .42 mm.; pterothorax, width, .46 mm.; abdomen, width, .64 mm.; tube, length, .26 mm.; width at base, .10 mm.; at apex, .05 mm. Antennæ: 1, 61 μ ; 2, 73 μ ; 3, 98 μ ; 4, 90 μ ; 5, 87 μ ; 6, 78 μ ; 7, 55 μ ; 8, 42 μ . Total, .58 mm.

Male.—Smaller than female (total length about 1.83 mm). Anterior femur slightly swollen; fore tarsus armed with a stout tooth. Tube twice as long as its greatest basal width, and two-thirds the length of head,



FIG. 19.—*C. rectangularis*