

Saturday BARGAINS for Thrifty Shoppers.

GROCERY. These Prices hold good for Friday and Saturday.

1 lb. tins Soup. Reg. 10c. tin for . . . 5c.
 3 lb. tin Grapes. Reg. 25c. tin for . . . 20c.
 Tins Corned Beef Hash. Reg. 12c. tin for . . . 10c.
 3 lb. tin Pork and Beans. Reg. 16c. tin for . . . 14c.
 Sardines. Reg. 9c. tin for . . . 7c.
 1 lb. tins Chocolate Icing. Reg. 35c. tin for . . . 30c.
 St. Ann Stove Polish. Reg. 10c. tin for . . . 8c.
 Libby's Bottled Fruits. Reg. 35c. bottle for . . . 28c.
 Kola Tonic Wine. Reg. 75c. bot. for 60c.
 Mooney's Soda. Reg. 35c. pail for 30c.
 Toilet Soap. Reg. 12c. cake for 8c.
 Evaporated Apples. Reg. 12c. pkg. for . . . 10c.

What you pay is not by any means all there is in the game of Bargains, but what you get; that's what really counts. It's that "what you get" feature that keeps this store busy.

CROCKERY. These Prices prevail on Friday and Saturday.

Best English China Tea Set, Willow pattern; 40 pieces. Reg. \$5.00 set for . . . \$4.48
 Clark's Pyramid Night Lights; assorted colors. Reg. 15c. for 13c.
 Clark's Pyramid Candles, 8 in. box. Reg. 28c. for . . . 25c.
 Krystal Glass Sherbert Dish. Reg. 20c. for . . . 17c.
 Krystal Glass 3-footed Cream Jugs. Reg. 35c. for . . . 30c.
 Royal Doulton Teapots, 8 cup size. Reg. 65c. for . . . 60c.
 Brown and White Stone Milk Basins, large size. Reg. 75c. for . . . 68c.
 White and Gold Vegetable Dish. Reg. 60c. for . . . 55c.
 White and Gold Dinner Plates, 10 in. Special. 10c.
 White and Gold Meat Dish, 16 in. Reg. 90c. for . . . 84c.

The Royal Stores Ltd.

SPECIALS.

Job Bed Spreads.

Now that the weather is getting warmer, you will want one of these useful Cotton Bed Spreads. They come in assorted designs and colors; made of superior quality cotton, nicely hemmed. Reg. price, \$1.25. Saturday . . . 99c

Quilts.

A nice collection of White and Colored Quilts. Honeycomb, with fringed ends, and Marcella with neat hems; all full sizes and good weights. Reg. \$2.00. Saturday . . . 1.69

Linoleum.

Over 500 yards of superior quality Linoleum, 2 yds. wide; handsome new Floral and Tile designs; splendid color combinations. Reg. \$1.00 yard. Saturday . . . 84c

Hearth Rugs.

Real Axminster, and a fine quality too; size 27 x 63, beautiful colorings and designs, exceptional values; only a limited number in stock. Reg. \$2.70. Saturday . . . 2.35

Pillow Cases.

The balance of this splendid line of Frilled Pillow Cases that sold so well last week; fine cotton bodies, embroidered corners and hemstitched frills; size 19 x 31. Reg. 40c. each. Saturday . . . 32c

Art Muslins.

An unusually attractive collection of pretty Art Muslins in various doral and other designs. Special for Saturday. . . 8c



Ladies Hose.

250 pairs Black & Tan Cashmere Hose, assorted ribs; well spliced heels and toes. Reg. 40c. pr. Saturday . . . 34c

Children's Hose.

Over 500 pairs Black Cashmere Stockings, to fit children of all ages; assorted ribs. Sizes 1, 2, 3. Special Sat'y, 17c. pr. Sizes 4, 5, 6. Special Sat'y, 25c. pr.

Ladies' Aprons.

20 doz. White Muslin Aprons of unusually fine quality; some are without bodies, neatly trimmed frills; others with bibs and brocheles, trimmed with Swiss Embroidery. Reg. 40c. Saturday . . . 32c

Fancy Neck Frilling.

Silk and Cord Neck Frillings in colors of White, Cream, Pink, Heli and Pale Blue; just what's required as finishing touch to any dress. Special for Saturday, yard . . . 6c

Kimonas.

An important sale of Kimona Jackets and Gowns, made of fine cotton material, with beautiful Paisley and Floral designs; assorted sizes. Reg. \$1.45. Saturday . . . 1.19

Middy Blouses.

A grand array of White Drill Middy Blouses, American make, reversible collars, and cuffs, trimmed in pretty Dark and Light Blue effects. Reg. \$1.15. Saturday . . . 95c

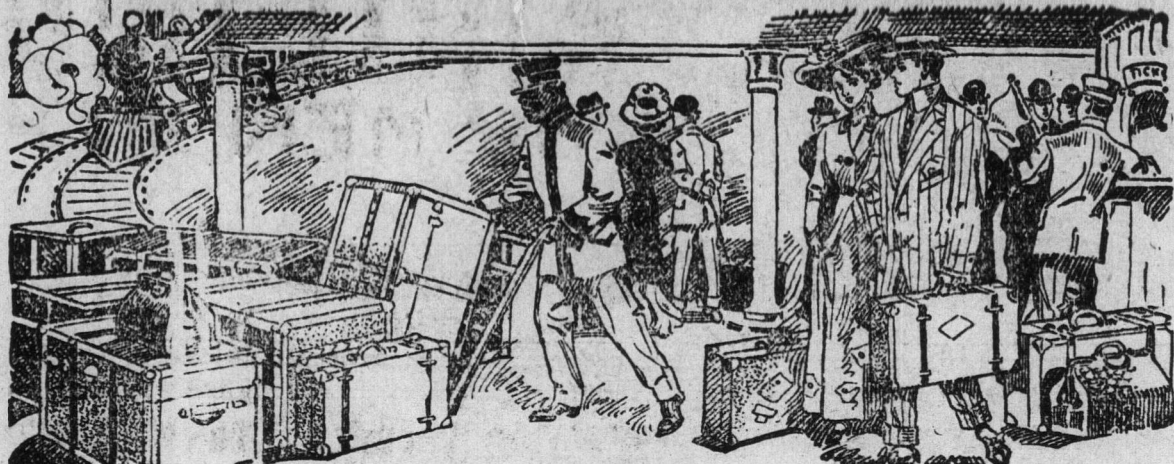
Ladies' Sailor Hats.

Newly opened. A great collection of new improved Sailor Hats, large leaf styles, ribbon bows in colors of Saxe, Navy, Cerise, Tan and Grey. Reg. \$1.00 each. Saturday . . . 77c

Motor Scarfs.

12 doz. Crystalline Motor Scarfs, in colors of Navy, Red, V. Rose, Tan, Grey, Saxe, Sky, Champagne, Cream and Black; 2 1/2 yards long, 15 ins. wide. Reg. 55c. each. Saturday . . . 43c

ECONOMICAL OUTFITTING FOR MEN,



SUIT CASES.

Every desirable style and size and almost all leathers and canvases will be found in our unequalled line of Suit Cases. For Saturday we offer the following:

Strong Imitation Leather Suit Cases, steel corner pieces, brass catches and locks; strong leather handle. Size 24 in. Reg. \$1.25. Saturday, \$1.12 each

Size 26 in. Reg. \$1.25. Saturday, \$1.20 each

HALF HOSE.

You will soon be requiring light weight socks, and here's the opportunity of buying a reliable make at a saving.

Black Cashmere Half Hose, extra spliced feet, fast colors; made in England. Regular 35c. pair. Saturday . . . 30c

MEN'S SHIRTS.

New patterns in Men's fine Shirts, made of high grade percale in assorted stripe effects; opening at back, medium cuffs; sizes 14 to 16 1/2 inches. Regular \$1.00 each. Saturday . . . 79c

WHITE LINEN SHIRTS.

An extra special line of fine White Linen Shirts, open at back, short bosoms, full cuffs; all sizes; correct fitting collar and bands. Reg. \$1.45. Saturday . . . \$1.19

SILK BOWS.

Over 40 doz. Fancy Silk Bows for men and boys. These come in a very large variety of patterns; are all new shapes, fitted with spring fasteners. Special for Saturday . . . 8c

SOFT COLLARS.

A nice line of Soft Collars, "Tourist" style, in neat striped patterns. These collars are given great praise by all who wear them; sizes 14 1/2 to 16. Reg. 15c. Saturday . . . 12c

KNOT TIES.

'Twould be hard for a man to picture in his mind anything so real neat in appearance as one of these Knot Ties. Smart new shapes and colors; stud fasteners. Reg. 20c. Saturday . . . 16c

MEN'S SLIPPERS.

Comfortable Carpet Slippers to wear around the house, solid leather soles and heels, wool lined, finished with leather bending; all sizes. Reg. \$1.00. Saturday . . . 87c

MEN'S BOOTS.

150 pairs stylish Boots for men. They include the following leathers: Yki Kid, Box Cal and Tan Calf. The man who admires and knows good workmanship will say at once that these are exceptional values at their regular price. Blucher and Buttoned styles. Reg. \$4.20. Saturday . . . \$3.89

BOYS' PANTS SUPPORTERS.

A new idea—Combination Belt and Braces for young boys, strongly made yet neat in appearance. Reg. 25c. each. Saturday . . . 20c

BOYS' BLOUSES.

14 doz. American Shirt Blouses for boys of 4 to 13 years, made of strong Gingham and Percale, plain and striped patterns, finished with neat pocket and nice fitting collar. Reg. 35c. each. Saturday . . . 29c

MEN'S HATS.

Smart new Hats for present season's wear in soft felt shades of Green, and Grey; leather inside bands, perfect fitting; all sizes. Reg. \$1.00 each. Saturday . . . 80c

SIX SHOWROOM SPECIALS.

Children's Hats.

White Chip Hats, mushroom and straight leaf shapes, nicely trimmed with Pink and Pale Blue Silk Ribbon and Foliage. Reg. 80c. Saturday . . . 57c

Coat Collars.

Smart new effects in Oriental Embroidered Collars, finished with accordion pleated Lace Jabots; very stylish and in great demand for present wear. Don't forget to come early. A limited supply only in stock. Reg. 80c. Saturday . . . 65c

Costume Belts.

Something new in Belts for wearing over costumes; very attractive and stylish; real Swede Belts, in assorted colors, trimmed self fringes and glass bands. Values to 70c. ea. Saturday . . . 18c

White Jersey Vests.

Another line of Essex Mills Underwear at popular prices. This time we offer White Jersey Ribbed Vests, sizes 34 to 44; low neck and shore sleeve styles; nicely finished in every way. Reg. 20c. each. Saturday . . . 17c

Ladies' Shirtwaists

A large and varied assortment of striped Cotton Shirtwaists, sizes 34 to 44 ins. bust; box pleated fronts, plain cuffs and collars; splendid values. Reg. 45c. Saturday . . . 39c

Ladies' Nightdresses.

White Lawn Nightdresses of exceptional quality. We have sold hundreds of these at regular prices. They are trimmed on neck and sleeves with Torchon Lace, Swiss Embroidery yokes finished with Pink and Blue Draw Ribbon. Reg. 75c. Saturday . . . 65c

HABERDASHERY DEPARTMENT

TOILET SOAP—Coronation make;

White, Cream and Ivory; large size cakes. Special, 3 for . . . 7c

SAVING BANKS—Post Office Pat-

terns; strong enamelled tin. Special, 2 for . . . 5c

FRENCH PLATE GLASS MIRRORS—

On wire stands; assorted styles. Special, each . . . 10c

BOOT LACES—Black Mohair, 52 ins.

long; plain tags. Special per doz. 5c

DEXTER CROCHET COTTON—In

White, Cream and Ivory; large balls. Special, per ball . . . 9c

PEARL BUTTONS—Assorted sizes;

12 on a card. Special, 3 cards for . . . 6c

PAPER NAPKINS—Dennison's Fast

Color Napkins; pretty patterns. Special, per 100 . . . 9c

BOYS' SCHOOL BAGS—Waterproof;

large outside pocket. Reg. 40c. Saturday . . . 30c

SIDE COMBS—Tortoise Shell, well

rounded points. Special, pair . . . 14c

HAIR PINS—Black Wire, 100 in a

box; plain and waved. Special, 3 boxes for . . . 5c

GILT JABOT PINS—Assorted pat-

terns; bright and dull finish. Special 4c

JOB BUTTONS—Black and Grey only;

fancy buttons; 50c. dozen. Saturday . . . 29c

Fishing Tackle, &c., in our Hardware Dept.

Trouting Baskets, close woven white rush.

Reg. \$2.75 for . . . \$1.94

Trouting Baskets, brown wicker.

Reg. \$1.10 for . . . 98c

Trouting Basket Straps. Reg. 35c. for 29c.

Trouting Basket Straps. Reg. 25c. for 21c.

Trouting Lines, oil silk; 25 yards.

Reg. 70c. for . . . 64c

Trouting lines, linen; 20 yards.

Reg. 15c. for . . . 13c

Trouting Flies, extra fine assortment.

Reg. 60c. doz. for . . . 52c

Trouting Hooks, single gut; Limerick or

Kirby. Reg. 25c. doz. for . . . 21c

Trouting Hooks, twisted gut.

Reg. 35c. doz. for . . . 30c

Cast Lines, medium mist color; 9 feet.

Reg. 17c. each for . . . 14c

Cast Lines, medium mist color; 9 feet.

Reg. 35c. each for . . . 29c

Trouting Reels, plain brass; 2 in.

Reg. 20c. each for . . . 17c

Trouting Reels, gun metal; 2 in.

Reg. 45c. each for . . . 40c

Plantoids, good for house plants.

Special 8c. box

Jackson's Floor Polish. Reg. 20c. box for 17c

Nickel Waiters, oval; 16 in. Reg. 35c. each for . . . 30c

French Glycerine Liquid Shoe Dressing.

Reg. 10c. for . . . 9c

Rubber Sponges. Reg. \$1.10 each for 96c.

Galvanized Buckets, 13 in. Reg. 30c. for 27c.

Trouting Poles, 3 joint extra top; 12 ft.

Reg. \$3.50 for . . . \$3.10

Trouting Poles, 3 joint. Reg. \$1.80 for \$1.58

Fifty-Five Years In Existence.

Exactly 55 years ago to-day the St. John's Total Abstinence and Benefit Society, was founded, those who inaugurated it being Wm. McGrath, Patrick Reardon, Chas. Kichham, John Meehan, Jno. Myrick, Jno. Barry, Philip Halley, H. E. Hewitt, J. Donnelly and Wm. Vincicomb. This excellent organization which has done so much for the spread of temperance here was founded as a non-sectarian society, and is the same to-day. To-day the Society is possibly more vigorous than ever in its history, has a roll of nearly 500 members in good standing with 400 in a Juvenile Branch, formed for the purpose of impressing the rising generation with principles of temperance. The Society also possesses a splendid Hall and Club Rooms, Theatre, etc., and evidently has a long and lusty life before it. The old-time Presidents were Chas. Kichham, William McGrath, John Donnelly, Jos. Fur-long, Patrick Reardon and Mr. J. O'Mara. Mr. Joseph Lynch, gave place to Mr. P. J. O'Neil, of the Customs Department, Mr. J. J. Bates succeeded him and the present popular chief executive is W. J. Ellis, Esq., Mayor of St. John's.

Dress Forms.

BY H. L. RANN.



The dress form is an inanimate object which makes it easy for a woman to tell whether a new gown is going to fit in more than one place or not without having a living model full of pin holes. Before the dress form was discovered a woman never knew whether her dress gaped in the back or sagged in front until she got to a meeting of the Priscilla sewing circle, when she was informed of it immediately after the reading of the minutes. Women who preferred to make their own clothes rather than wait until Thanksgiving day for a spring suit had to borrow one of the neighbours for a half day, and then circle around her with a mouthful of pins and a critical squint. If she happened to select a hipless neighbour or one who would lose interest in the proceedings and droop wearily to the fit like a rain coat on a Rocky Mountain antelope.

There are two kinds of dress forms—wire and pneumatic. The wire form has no arms or legs, but is sound in all other respects. One nice thing about the wire dress form is that it is not liable to shift to the other foot and throw both arms in an elastic yarn just as the fitter has staked out some buttonholes. It does not complain, either, if it is stabbed in the back with a safety pin, and it never sits down on the sofa in a fetching negligee and expresses an unbiased opinion on the quality of the material used or the scantiness of the skirt.

The pneumatic dress form is a beneficent device which can be blown up to correspond with any waist measure and left in a distended condition while the owner decides where she will tack on a few pleats. It is dangerous, however, to use pins around a pneumatic form, as it is liable to explode on being punctured and scatter hooks and eyes all over the premises.

Dress forms are not employed by dressmakers, who prefer to use the customer for a target. As a perfect fitting requires the customer to stand in an erect and immovable attitude for three hours, without a sag, it is no wonder that the dress form is supplanting this form of cataplectic treatment.

Is Very Dangerous.

We certainly agree with our contemporary, the News, as to the speeding of motor equipages on LeMarchant Road, nightly, and on several occasions of late the Telegram has drawn attention to it. Another phase of this abuse is that some bicycle riders nightly appear without lights and people pass that way at great risk. There is no sidewalk on the north side of the road, so that people must keep the middle of the thoroughfare, and often they are in danger of their lives or of severe injury.

MANY CAMPING OUT.—Camps are being put up all over the country side of late and numbers of young men will occupy them nightly during the summer. Quite a number of the members of the various Boys' Brigades are camping out and a number of the C. C. C. are out on Nagle's Hill. The ground being damp they have brought hammocks along to sleep in.

Winnard's Liniment Cures Erythoria.