

## THE CHURCH BOOK ROOM

17 Richmond St. West, Toronto

### Leaflets for Summer Sunday Schools.

Senior Grade 10 cents per copy per annum. Junior Grade 7 cents per copy per annum. Prepared.

### Teachers Assistant.

30 cents per annum. Prepared. To explain and illustrate "The Canadian Church Sunday School Lessons" Selected by the Inter-Diocesan S. S. Committee. Appointed under the authority of the Synod of the Ecclesiastical Province of Canada.

### New Books With God and the World

By The Rev. CHARLES H. BRENT. St. Stephen's Church, Boston.

CONTENTS: 1. The Universal Art. 2. Friendship with God: Looking. 3. Friendship with God: Speaking. 4. Friendship with God: The Response. 5. The Testing of Friendship. 6. Knitting Broken Friendship. 7. Friendship in God. 8. Friendship in God: Continued. 9. The Church in Prayer. 10. The Great Act of Worship. 11. Witnesses unto the Uttermost Part of the Earth. 12. The Inspiration of Responsibility. Appendix: Where God Dwells. Cloth. Gift top, \$1.

### "COME HOME"

New book, 350 pages, 8vo. Cloth bound. By Dr. LANGTRY.

An appeal to the separated, setting forth with cogent proof what the Church is, what the claims of the Church of England are, as the Catholic Church Reformed. The reason given by themselves for separating from her by 1. The Independents. 2. The Romanists. 3. The Presbyterians. 4. The Baptists. 5. The Quakers. 6. The Methodists. It is pointed out that almost without exception they have themselves abandoned the reasons which they gave for separating; they now allege as reasons for not accepting reunion, that the Church of England believes in Sacerdotalism, Apostolic Succession, Baptismal Regeneration, The Eucharistic Sacrifice, The Real Presence, Priestly Absolution, Ritualism, That she prays out of a Book, and does not believe in Conversion. Each of these subjects is treated in a separate chapter. The position of the Church defined, and established by scripture.

### The Parson's Handbook.

Containing practical directions both for parsons and others as to the management of the Parish Church and its Services according to THE ENGLISH USE as set forth in the book of Common Prayer.

With an Introductory Essay on Conformity to THE CHURCH OF ENGLAND. By the Rev. Percy Dearmer, M. A. Price, \$1.25.

### The Old Faith and New Philosophy.

By Rev. G. J. Low, D.D., 50c.

### Doubt and Faith.

Being Donnellan Lectures delivered in Trinity College, Dublin, 1898-9. By E. J. Hardy, M. A., Chaplain to H.M. Forces, \$1.50.

### The Transvaal from Within

By J. F. FITZPATRICK. Paper, 75c. Cloth, \$1.25, Postpaid. The Spectator:—"It can be claimed for Mr. Fitzpatrick that he states facts and not prejudices, that he is not blinded by hatred, and that he sees the necessity of meeting arguments by arguments, and not by mere rhetoric. He does not merely censure the Boers, but shows how and why the Outlanders have found it impossible to live under their rule, and why they prefer to risk the ruin of their lives and fortunes to submitting to continued misgovernment. "All who desire to understand the case of the Outlanders should read Mr. Fitzpatrick's book—a book which, we may add, is written throughout with no little literary skill, and is uniformly as sane and manly in style as it is interesting and valuable in matter."

Any of the above books sent PREPAID upon receipt of price.

### NOTICE

The Annual Meeting of the Shareholders of the Church of England Publishing Company, Limited, will be held at the offices of the Company, 17 Richmond St. West, at the hour of 10.30 a.m., on Friday, the 22nd day of June, 1900. The business before the meeting will be the consideration of the Annual Report, the election of Directors for the ensuing year, and to transact such other business as may be brought before the meeting.

CHAS. J. MUSSON, Secretary-Treasurer. Toronto, May 19th, 1900. The Church of England Publishing Co., Limited

17 Richmond St. West, Toronto.

INCORPORATED TORONTO MON. G. W. ALLAN 1880 PRESIDENT

## CONSERVATORY OF MUSIC

COLLEGE STREET. DR. EDWARD FISHER, Musical Director. Affiliated with Toronto and Trinity Universities.

The Oldest, Largest and Best Music School and Strongest Faculty in Canada. A THOROUGH, ARTISTIC, AND FINISHED MUSICAL EDUCATION OF THE HIGHEST STANDARD.

Examinations June 19th, 20th, 21st and 22nd. Applications to be in by June 1st. CALENDAR AND SYLLABUS mailed free

CONSERVATORY SCHOOL OF ELOCUTION MAUDE MASSON, Principal. Reading, Recitation, Oratory, Voice Culture, Physical Culture, Rhetoric, English Literature, Orthoepy, Psychology, Pedagogy. Class and Private Lessons.

### Edgehill, Church School for Girls

WINDSOR, NOVA SCOTIA. Incorporated 1891.

The Bishop of Nova Scotia, Chairman Board of Trustees. Miss Lefroy, of Cheltenham Ladies' College, England, Principal. Eight Resident Experienced Governesses from England. Housekeeper, Matron and Nurse. Board and Tuition Fees, including French-Latin or German or Greek, Daily Calisthenics, Class Singing and Needlework, \$225 per annum, or \$75 per term. Music, Singing, Painting, Drawing, &c., are extras. Preparation for the Universities. Easter Term begins March 28th, 1900. For Calendar apply to DR. HIND.

### RIDLEY COLLEGE

ST. CATHARINES, ONT.

A Canadian Church School for Boys. The new Preparatory School for Junior Boys is now in full operation. For calendar and full information apply to REV. J. O. MILLER, M.A., Principal.

### Trinity College School

PORT HOPE ONT

Michaelmas Term begins on Wednesday, September 13th. The handsome new buildings are unsurpassed in the Dominion, and are provided with all modern appliances for the health and comfort of the boys. Two entrance Scholarships open for competition in September. A preparatory Form for little boys. For admission or further information address the REV. R. EDMONDS JONES, M.A., Oxford, HEAD MASTER.

## Church - - Extension Association

341 Spadina Avenue, Toronto

Open daily from 2 p.m. to 6.00 p.m. Saturdays 9.00 to 9.30. Surpluses made to order from \$3 up. Garments for Men, Women and Children, new and second-hand, at low prices. Also Books, Publications, Sacred Pictures.

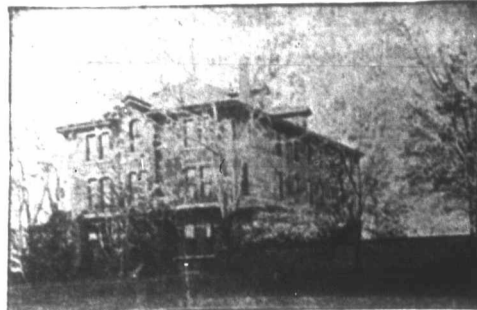
### The Yorkville Laundry

45 ELM STREET

H. D. PALSER, Proprietor. Telephone 1580. ALL HAND WORK

FAVORABLY KNOWN SINCE 1826. BELLS HAVE FURNISHED 35,000 CHURCH, SCHOOL & OTHER BELL-METAL. PUREST BEST GENUINE WEST-TROY, N.Y. CHIMES, ETC. CATALOGUE & PRICES FREE.

HARRINGTON'S TUBULAR CHIME BELLS. Lighter in Weight, Sweeter in Tone, Cheaper in Price, than the Ordinary Bell. COVENTRY, ENG. Castle & Son 20 University St., Montreal & Quebec



"Glen Mawr" MISS VEALS' SCHOOL. 651 SPADINA AVE. TORONTO. Art, Music, Matriculation & General English Course. EARNEST, PROGRESSIVE, THOROUGH.

### Rolleston House,

170 Bloor St. West, Toronto. Resident and Day School for Girls. Pupils prepared for the Universities. Re-Opens January 11th. For Prospectus apply to MRS. NEVILLE.

### Bishop Strachan School for Girls

President—The Lord Bishop of Toronto. Preparation for the Universities and also Elementary work. Apply for Calendar to MISS ACRES, Lady Principal, Wykeham Hall, Toronto.

### Bishop Bethune College, Oshawa, Ontario

UNDER THE CHARGE OF The Sisters of St. John the Divine. Visitor, the Lord Bishop of Toronto. For terms and particulars apply to the SISTER IN CHARGE, or to The Sisters of St. John the Divine MAJOR STREET, TORONTO. School re-opens (D.V.) Monday, April 23rd.

### Hellmuth Ladies' College

LONDON, ONT. CIRCULARS. The Harding Hall Girls' School Limited, Harding Hall, London. A Boarding and Day School for Girls. Pupils prepared for Universities if desired. Spring Term begins January 25th. For Prospectus apply to MRS. J. E. WELLS, Principal, 661 Talbot Street, LONDON

School of the Sisters of the Church, 69 Baldwin Street. Collegiate Department. Secondary Department. Primary Department. Boys' Department. Kindergarten. Instruction conducted on the English High School system under thoroughly trained English teachers. Preparation for public examinations; accommodation for boarders attending the school, in the neighborhood. Christmas Closing Exercises Thursday, December 21st, 3 p.m. Next term will begin Monday, January 8th, 1900 (D.V.)

### CHURCH BRASS WORK

Eagle and Rail Lecterns, Altar Vases, Ewers, Candlesticks, Altar Desks, Crosses, Vesper Lights, Altar Rails, etc. Chandelier and Gas Fixtures. CHADWICK BROTHERS (Successors to J. A. Chadwick). MANUFACTURERS 182 to 190 King William St., HAMILTON, ONT

CHURCH WINDOWS SIMPLE & ORNATE. MEMORIALS A SPECIALTY. McCAVSLAND TORONTO

## JONES & WILLIS

Church Furniture Manufacturers ART WORKERS IN Metal, Wood, Stone and Textile Fabrics. 43 Great Russell Street, LONDON, W.C. (Opposite the British Museum). And Edmund St., BIRMINGHAM, Eng. Concert St., BOLD ST., LIVERPOOL.

### Bishop Blyth's Mission.

Bishop Blyth, representing the Church of England in Jerusalem and the East, by commission from the Archbishop of Canterbury, appeals for subscriptions and donations in aid of his work. Subscriptions received and information gladly given by REV. CANON J. D. CAYLEY, St. George's Rectory, Toronto, Ontario



### All Our Ice

is from LAKE SIMCOE, especially prepared for home use and delivered as directed by courteous and obliging men. 15 lbs. costs at the rate of 6c. per day, 30 lbs. 7c., 50 lbs. 10c. We have also a \$1.00 per month rate for small families. BELLE EWART ICE CO. Head Office, 18 Melinda St. Tel's. 1947-2003. Look for Yellow Wagons.

### GEO. W. COOLEY

Importer of 567 Yonge St. High-Class Wines & Spirits for Medicinal use. Telephone 3089. Sacramental Wine

When writing to or purchasing from Advertisers please mention The Canadian Churchman

STAINED GLASS. MEMORIAL :::: WINDOWS :::: BRASSES AND DECORATIONS. Castle & Son 20 UNIVERSITY ST., MONTREAL

Church Brass Work MEMORIAL BRASSES RAILS VASES. PRITCHARD ANDREWS CO OF OTTAWA, LIMITED 133 Sparks St. OTTAWA.

Vol. Bui Our work quality. very bes do, each cause we make eac piece just If yo fine, wea your ord See BER Co Sold in A R Cho Con You can Orders Telephone Bak C Are yo money vineed NIA On a Strs. Will lea daily (e) p.m. an and Qu Central Central R. R., 1 Gre IC Lake Rates Toro. Ono 44 L Tele Carpets Over 7 and Mat Pf