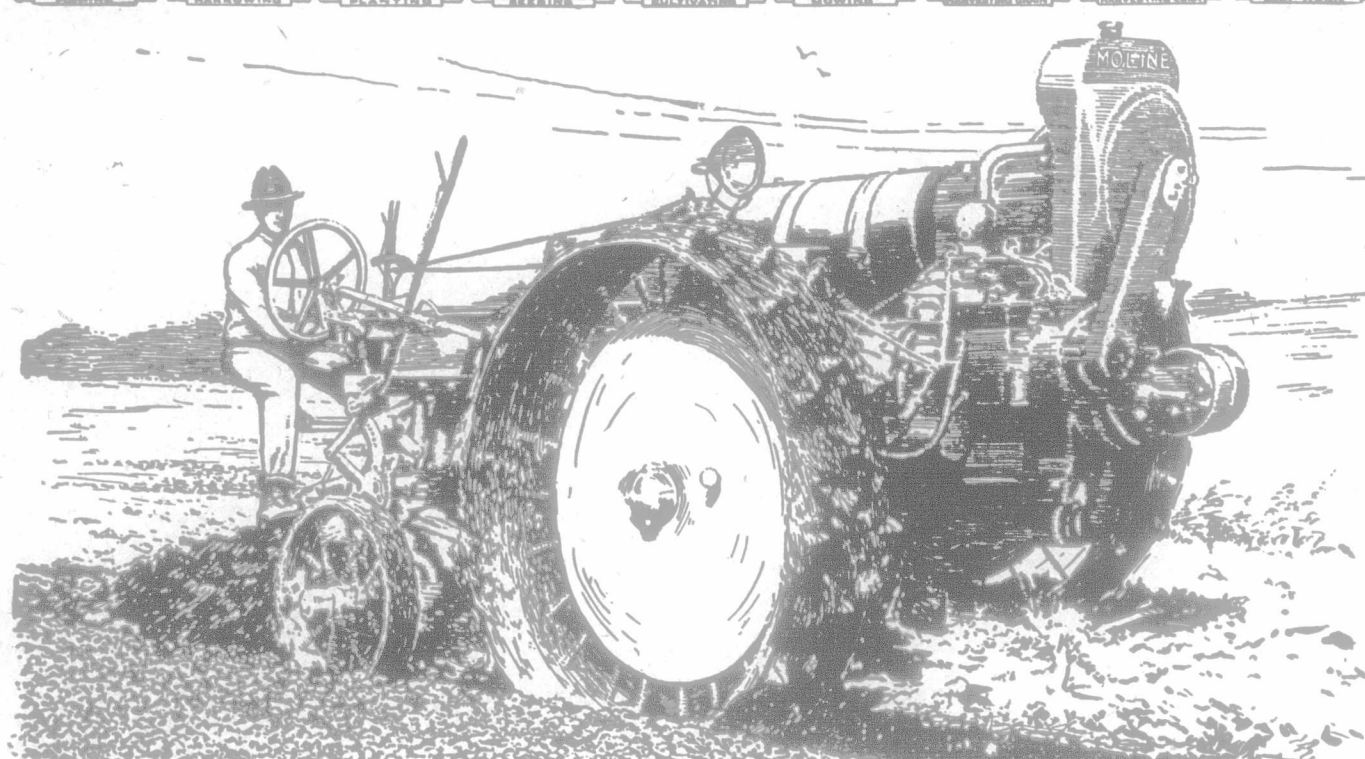


ONE MAN OPERATES BOTH TRACTOR AND IMPLEMENT



More Speed-More Power-More Work

EVERY farmer who sees the new Moline-Universal Model D plowing is astonished at its speed, the splendid quality of work and the ease at which it operates. After seeing the Moline-Universal work, you will realize that the number of plows pulled is less important than the amount of work accomplished.

Great Capacity for Work

Speed, power and light weight are combined in the new Moline-Universal tractor to a remarkable degree. As a result, under any ordinary plowing conditions, the Moline-Universal pulling 2 plows at 3½ m.p.h. will plow 9 acres in a 10-hour day—equal to a 3-plow tractor traveling 2½ m.p.h., the usual tractor speed. Thus the Moline-Universal gives you large capacity for heavy work, ample power for all belt work on the average farm, with these distinct advantages over other tractors—light weight; greater economy and ease of operation; ability to do all farm work, including cultivating, and ONE-MAN control of both tractor and implement

from the seat of the implement, where he must sit in order to do good work.

Does Better Plowing

An advantage of speed plowing is the better quality of the work. With properly shaped moldboards and the Moline-Universal tractor plowing at 3½ m.p.h. the soil is more thoroughly pulverized and compacted than at slower speeds. It is left in such a level and fine condition that furrow marks are hard to distinguish.

Positive Reliability

And keep this in mind always—the Moline-Universal is built for positive reliability. The powerful 4-cylinder, overhead-valve, vibrationless engine delivers full 9 h.p. at drawbar and 18 h.p. on belt; unusually large bearings lubricated under 35 lbs. pressure; Remy electric starting, lighting and ignition system with governor generator; all moving parts completely enclosed; 15 Hyatt roller bearings; 5 adjustable ball thrust bearings; 7 splined shafts; differential lock; heat treated and steel cut

gears—these give "positive reliability," and make the new Moline-Universal the best tractor money can buy.

Self Starter and Electric Lights

Self starter relieves the back breaking strain of cranking, makes tractor operation easy for non-robust help. In fact, many women and boys are successfully running Moline-Universal tractors. The self starter is a feature every operator will appreciate. Electric lights increase the working capacity of the Moline-Universal so that you can use the tractor night and day in the busy season. It gives you an emergency power always available to make up for any unavoidable delays.

Free Tractor Catalog

Your copy of our new tractor catalog which completely describes the Moline-Universal Model D is now ready. A postal will bring it to you, also the name of your nearest dealer. Address Dept. 00.

Canadian Distributors:

Willys-Overland Limited, Toronto
Manufactured by
MOLINE PLOW CO., MOLINE, ILLINOIS

MOLINE

UNIVERSAL TRACTOR

It Solves The Farm Help Problem

Use
Harab-Davies
Fertilizers
For Profit

Write for Free Bulletin

Ontario Fertilizers

Limited

Toronto

Sydney Basic Slag

FERTILIZES YOUR LAND ECONOMICALLY AND EFFECTIVELY

If you know the goods place your order with our local agent right away. On the other hand, if you have never used SYDNEY BASIC SLAG, write for our pamphlet giving all information.

Agents wanted where not already represented. Write immediately.

The Cross Fertilizer Co., Limited

Sydney, Nova Scotia

Cut
Down
Butter
Losses



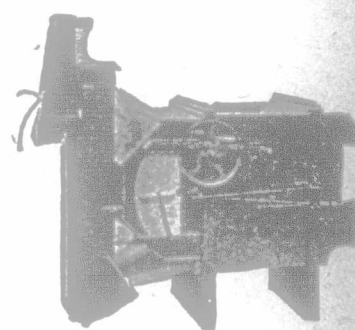
As long as your butter is in your possession, you can control its surroundings. But after it is shipped it is beyond your control. It may meet with all sorts of contamination on the road.

EDDY'S INDURATED FIBREWARE BUTTER TUBS

afford positive insurance for your butter while it is in transit. They are impervious to taints and odors. The hard baked, glazed surface is an effective protection. They are light, and do not increase shipping charges, while they are so durable that they can be used over and over again.

An Eddy Tub will keep your butter out of bad company, and will save its cost many times over.

The E. B. EDDY CO. Limited
HULL, Canada
Also makers of the Famous Eddy Matches



The Kline Mill

sold at Auction after Inventor died, when one could be got, at Twice the Price of new one to-day. The Public thought they would not get any more Kline Mills, in vicinity of Beeton and near towns. It is the only mill that weighs and grades grain. In separating wild oats has no comparison. Capacity One Hundred bushels an hour; also power attachment. Easiest mill to turn made. Write for particulars.

Kline Fanning Mill Co., Beeton, Ontario

The "Monarch" FANNING MILL



Endorsed by The Seed Growers' Association of Canada; also by Dept. of Agriculture, Nova Scotia.

Get Our Factory to Farm Prices.

Mississippi Iron Works
Almonte, Ont.

ESTABLISHED 1875

EVERLEA FARM SEED CORN

White Cap Yellow Dent and Wisconsin No. 7, rack dried, seed corn, grown from Ontario seed. A guaranteed germination of 95% or better. Price, \$3.75 (three dollars and seventy-five cents) per bushel of 70 lbs. of ears. Farm Club orders especially solicited. Freight prepaid on orders of 10 bushels and over. Bags furnished.

F. C. BUTTS & SON
R. R. No. 2 Essex, Ontario

BE YOUR OWN

BLACK-SMITH

FARMERS! SAVE REPAIR BILLS & VALUABLE TIME. ONE OF OUR BLACK-SMITHING OUT-FITS WILL PAY FOR ITSELF. CATALOG FREE

THE HALLIDAY COMPANY, LTD. HAMILTON
FACTORY DISTRIBUTORS CANADA