

MUNICIPAL ENGINEERS, CONTRACTORS AND MATERIALS

WILLIS CHIPMAN

Hon. Grad. McGill University.
M. Can. Soc. C.E., M. Am. Soc. C.E.
Mem. Am. W.W. Ass'n.

**WATERWORKS, SEWERAGE WORKS, GAS
WORKS, ELECTRIC LIGHT AND
POWER PLANTS**
Reports, Surveys, Construction, Valuations
103 BAY STREET - TORONTO

R. E. SPEAKMAN, C.E.

A. M. Inst. C. E., 1878.

CONSULTING ENGINEER

Waterworks, Sewerage and Sewage Disposal.
Municipal Improvements.
Granolithic Pavements.
Electric Light Plants.
Drainage and Irrigation of Land.
Coal Handling Plant and Machinery.
Plans, Specifications and Estimates.
Cost Estimates and Valuations.

Canada Life Building - TORONTO

Roderick J. Parke

Am. Can. Soc. C.E., A.M. Amer. Inst. E.E.

CONSULTING ENGINEER

Hydraulic Power Development. Long Distance
Power Transmission. Steam Plants, Electric
Lighting and Power Systems. Tests.
Valuations. Reports.

51-53 James Building, Corner
King and Yonge Streets, TORONTO, CANADA

Telephones: Office—Long Distance Main 3047
Residence—Long Distance North 2204
Telegraphic address: "Rodparke."
W. U. Code, Univ. Edition.

WILLIAM H. BREITHAUP, C.E.

M. Am. Soc. C.E., M. Can. Soc. C.E.

CONSULTING STRUCTURAL ENGINEER

Foundations, Bridges, Buildings.
BERLIN, ONT.

CEMENT TESTING**Dr. J. T. Donald**

Official Analyst to the Dominion Government.
Established 1880.

Physical and Chemical Tests on all kinds of
CEMENTS and RAW MATERIALS. Prompt
returns and lowest rates consistent with accurate
work.

112 St. Francois Xavier Street, Montreal, Canada

ROSS & HOLGATE

Consulting and
Supervising Engineers

Waterworks, Electric Light and Power
Plants, Structural Work, Reports,
Estimates, Arbitrations.

80 ST. FRANCOIS XAVIER ST. - MONTREAL

RAILS For Contractors, Switches, Gir-
ders, &c.
New and Second Hand
LOCOMOTIVES AND CARS

John J. Gartshore

83 Front St. West,

Opposite Queen's Hotel.) TORONTO.

FIREMEN'S LADDERS

—AND—

LADDER TRUCKS

We make the lightest, quickest,
strongest and cheapest. Every Town
and Village needs them and can afford
them. They will save 50 times their
price in insurance premiums. Write
for circulars and quotations.

THE WAGGONER LADDER CO., Limited
LONDON - ONT.

John H. Jackson**CIVIL ENGINEER**

WATER POWER, ELECTRIC RAIL-
WAYS, STRUCTURAL STEEL.

Niagara Falls, Canada

Associated with Charles H. Mitchell,
C. E., Hydraulic Engineer.

CHARLES BRANDEIS

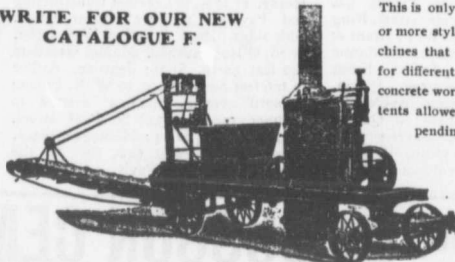
Consulting Electrical and Mechan-
ical Engineer.

Electric Lighting, Power and Railway
Plants.
Liverpool, London and Globe Building,
MONTREAL.

Long Distance Telephone Main 3256.

The Greatest Concrete Mixer Yet Made

WRITE FOR OUR NEW
CATALOGUE F.



This is only one of 30
or more styles of ma-
chines that we make
for different kinds of
concrete work. 10 pa-
tents allowed, others
pending

NUMBER OF PATENTS

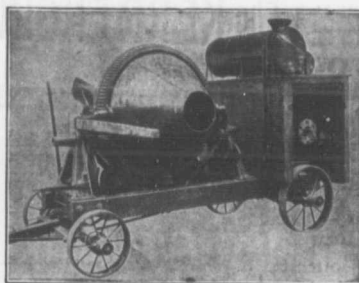
| |
|---------|
| 33,664 |
| 672,934 |
| 675,033 |
| 675,036 |
| 675,037 |
| 698,182 |
| 698,910 |
| 699,667 |
| 699,668 |
| 701,312 |

Also
Mortar and
Asphalt Mixers

DRAKE STANDARD MACHINE WORKS

Factory,
7-9-11-13 Garden Street, Chicago.

Office and Salesroom, 298-300-302 W. Jackson Boul.
CHICAGO, ILL., U. S. A.



18
Different
Sizes
and
Styles.

Mounted
on
Skids
or
Trucks.

With
or
Without
Power
Attached

No. 1 Smith Mixer on Trucks With Gasoline Engine.

SMITH MIXERS

Are Unexcelled for Rapid and Thorough Mixing.
They are the Simplest and Strongest in Con-
struction. Capacities up to 350 Cubic Yards
per Day.

W.H.C. MUSSEN & CO., 763-765 Craig St.
MONTREAL

**CANADIAN
CONTRACTOR'S
HAND-BOOK**

and
Estimator

Third Edition

Price \$1.50; to
subscribers of
the Canadian
Architect and
Builder, \$1.00.

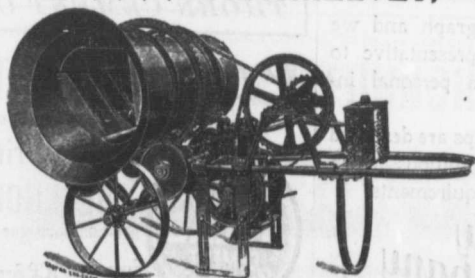
SEND FOR A COPY

C. B. Mortimer
Publishing Co.
Toronto.

Please mention THE CONTRACT RECORD when corresponding with advertisers.

THE McKELVEY CONCRETE MIXERS

MANUFACTURED BY **W. A. McKELVEY,** McKinnon Building,
TORONTO.



These machines
are made to mix
either continu-
ously or in
batches, and can
be operated
either by Hand,
Steam or Gas-
oline Power.