

Seeing Vancouver

Trip No. 3

Capilano Canyon



A DELIGHTFUL FOUR-HOUR TRIP, crossing the ferry to North Vancouver, thence to the Canyon, one of the most picturesque regions of the Continent. The Canyon is several miles long and from 100 to 400 feet deep, and from 100 to 500 feet in width—in many places a mere stone's throw. Through this Canyon the Capilano River, a glacier-fed stream, rushes to the sea.

Sufficient time is allowed to cross and inspect the world-famous Suspension Bridge, and to visit the Capilano Canyon Gardens and the beautiful grounds of the Capilano Hotel.

Return trip includes a tour of the business district.

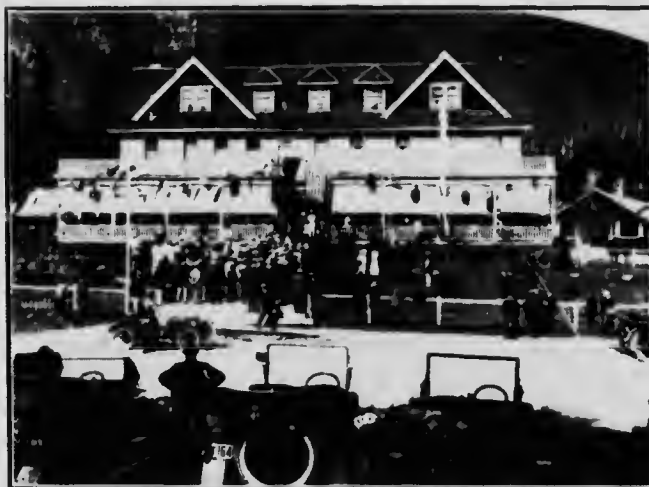
FOUR HOURS—FARE \$1.50

Trips leave daily at 10 a. m. and 2 p. m.

BROWN CARS

PHONE SEYMOUR 4388

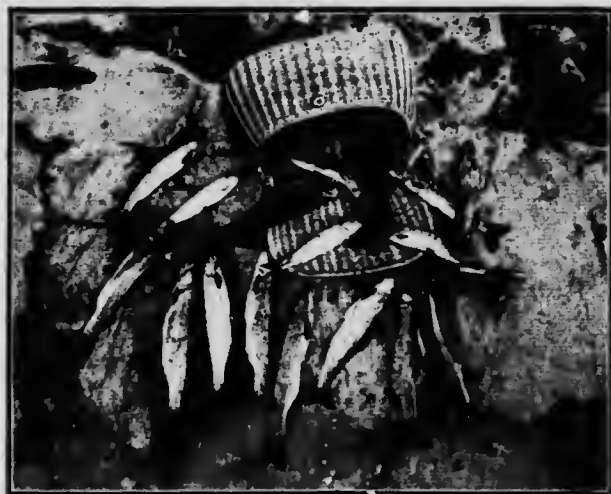
The Second Canyon



CANYON VIEW HOTEL

BEAUTIFUL, ODD, UNIQUE, nestled at the foot of snow-capped mountains, and on the very precipice of the famous Capilano Canyon, this play-ground resort awakens in the breast of all who visit it a feeling of awe and wonderment. The convenience of the traveler and tourist was the one aim in the erection and equipping of this hotel. What one wishes he will be supplied with, old and young—the peace-loving or the frolicsome—every desire may be granted.

Failing to visit such a place will be depriving one's self of a never-to-be-forgotten memory



A FISHERMAN'S PARADISE

Take North Vancouver Ferry at foot of Columbia Street, and Street Car to Hotel.

Rates \$2.50 per day.

Special weekly rates to Tourists and Sportsmen.

P. LARSON, Prop.

CHAS. WATSON, Mgr.