

ping end. The left front is narrow and the right front is correspondingly wide to bring the closing at the left side in true Russian style. Three clusters of five tucks are taken up in the front and back, the lower two clusters encircling the figure; and similar clusters are made in the upper portion of the coat-shaped sleeves, one at the elbow, one above the elbow and one near the wrist which may be plain or in Venetian style. A novel drapery in two sections is arranged on the top of each sleeve to form a puff back of a jabot. Knife-plaitings of silk form a stylish decoration for the wrists, the closing edge and collar, the collar frill rising above a stock having frilled ends closed at the back.

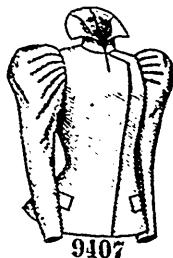
The mode is adaptable to soft, fine woollens and such silks as taffeta, India and Liberty silk, foulard and *crêpe de Chine*. Ruffles or plaitings of chiffon or silk, lace, or fancy bands and tiny buttons may be used to trim.

We have pattern No. 9368 in six sizes for ladies from thirty to forty inches, bust measure. For a lady of medium size, the blouse needs five yards and seven-eighths of material twenty-two inches wide. Price of pattern, 1s. or 25 cents.

LADIES' BLOUSE SHIRT-WAIST, WITH FITTED LINING AND REMOVABLE COLLARS. (KNOWN AS THE ALEXIS SHIRT-WAIST.)
(For Illustrations see Page 397.)

No. 9390.—This pleasing shirt-waist introduces the pouch effect so popular, and is known as the Alexis shirt-waist. It is pictured made of corduroy with white linen collars. A yoke shaped by a center seam and curved to form two points at the lower edge is applied on the back; and the fronts have fullness at the top collected in gathers at the neck and shoulder edges and are

closed at the center with buttons and button-holes through a box-plait at the front edge of the right front. The lining is closely fitted and the shirt-waist is shirred and tacked to the lining to pouch all round over a belt that is closed in front. The shirt sleeves are up to date in size and general effect; they are gathered at the top and stand out stylishly, but are rather close at the bottom; they are shaped by inside seams and are com-

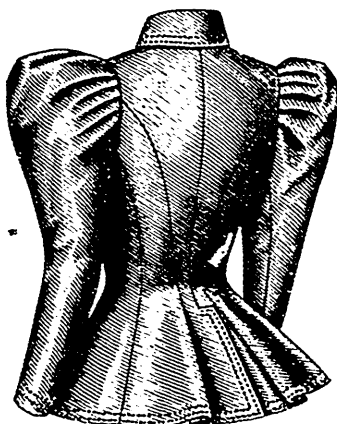


9407



9407

Front View.



9407

Back View.

LADIES' COAT OR JACKET. (TO BE MADE WITH A DOUBLE-BREASTED STRAIGHT OR DIAGONAL CLOSING AND WITH A LAFAYETTE OR TURN-DOWN COLLAR.)
(For Description see Page 382.)

pleted by straight cuffs that are closed with link buttons below short slashes finished with a continuous underlap. As the col-



FIGURE No. 163 B.—This illustrates LADIES' COAT OR JACKET.—The pattern is No. 9407, price 1s. 3d. or 30 cents.

(For Description see Page 382.)

lars are removable, the shirt-waist is finished with a neckband. One collar is in standing style with the ends separated; the other is a standing collar with shallow turn-down sections flaring at the front and back.

This style of shirt-waist will be largely made of fine cloth or velvet and flannel will also be used for it. Stitching is the finish most appropriate and either studs or buttons may be used for the closing.

We have pattern No. 9390 in six sizes for ladies from thirty to forty inches, bust measure. For a lady of medium size, the shirt-waist, except the collars, needs three yards and seven-eighths of goods twenty-two inches wide; the collars need a half a yard of material thirty-six inches wide. Price of pattern, 1s. or 25 cents.

LADIES' SHIRT-WAIST OR BLOUSE-WAIST IN SHIRT-WAIST STYLE, WITH REMOVABLE COLLAR AND CUFFS. (TO BE MADE WITH OR WITHOUT FITTED LINING.)
(For Illustrations see Page 397.)

No. 9380.—This shirt-waist or blouse-waist in shirt-waist style shows a decidedly novel effect in its front. Glacé silk and white piqué form an attractive combi-