



J. & T. BELL

MANUFACTURERS OF FINE

BOOTS AND SHOES

Factory: Inspector Street, - MONTREAL, QUE.

L. GODBOLT, WESTERN AGENT, WINNIPEG, MAN.

GRANBY RUBBER COMPANY

Full Line Lumberman's Gum Goods and Snow Excluders

Fine Jersey Goods in Men's, Women's, Misses' and Children's

See our New Frieze Top Heavy Gum Overshoe—The best in the market

OUR TRAVELLERS WILL HAVE FULL LINE SAMPLES ON THE ROAD
IN APRIL AND MAY

THE AMES HOLDEN CO., LTD., SOLE AGENTS

COMPLETE STOCK OF RUBBER GOODS CARRIED IN WINNIPEG

GRANULAR

Ogilvie's Hungarian FLOUR

CREAMY

HAS NO EQUAL

HAS NO EQUAL

STANDS unparalleled in its Distinctive Qualities and Peculiar Advantages. We are aware others are attempting to imitate our Brands, which is the Strongest Guarantee of the Superiority of

"OGILVIE'S FLOUR"

Messrs the Ogilvie Milling Co., Winnipeg, Man.

Dear Sirs—We have pleasure in stating that the quality of the flour made in the Winnipeg mills, of which we have imported considerable on this crop, has given the highest satisfaction to everyone who has baked it. Glasgow is pre-eminently a city of large baking establishments, some of them with a capacity of 3000 barrels per week, and all managed by gentlemen well qualified to give a sound verdict on the merits of any flour. With remarkable unanimity they have expressed the opinion that nothing finer than your Patent grade has ever been placed on the market. The baking results have been exceptionally high, both in regard to color and out-turn, and we can invariably command a higher price. We are, yours respectfully,

WILLIAM MORRISON & SON.

IN HANDLING

OGILVIE'S FLOUR

YOU HAVE

THE BEST

Each bag guaranteed. Sewn with our Special Twine, Red, White and Blue.

OGILVIE'S HUNGARIAN

Unequalled for fine Cakes and Pastry. Stands unrivalled for Bread Making. Make the sponge thin. Keep the dough soft. Do not make it stiff. For pastry use little less flour than usual.

W. H. MALKIN & CO.

VANCOUVER, B. C.

Dealers in

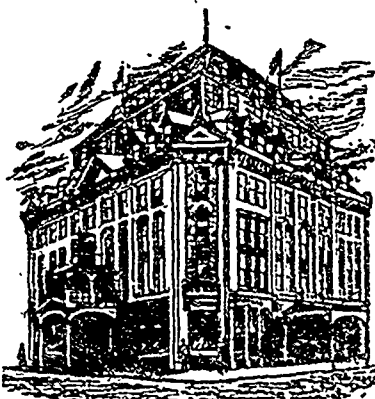
BUTTER, CHEESE, EGGS

Choice California and Local Fruits

OUR SPECIALTY—Consignments of produce from Manitoba and Northwest Territories. Prompt returns made on the 15th of each month

TRY US.

HOTEL LELAND



THE PALACE FAMILY AND
COMMERCIAL HOTEL

Rates, \$2.00 to \$4.00 a Day

Second to nothing in Canada.

W. D. DOUGLAS, Manager.

City Hall Square, Winnipeg.