

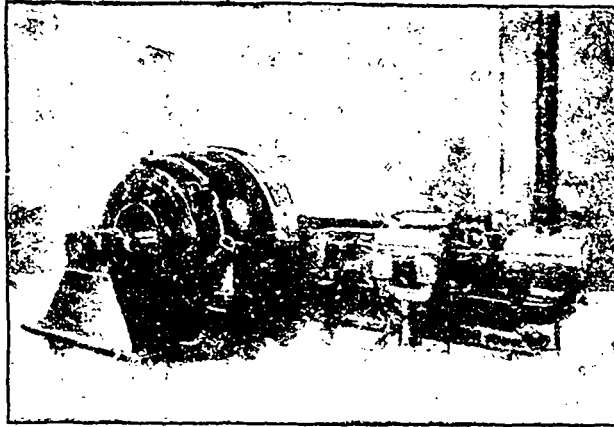
IDEAL HIGH SPEED ENGINES

PERFECTION IN HIGH SPEED ENGINE DESIGN, NOISELESS RUNNING,

PERFECT
LUBRICATION

ACCESSIBILITY

ECONOMY



ASK FOR
BULLETIN No. 6

QUOTATIONS
CHEERFULLY
GIVEN

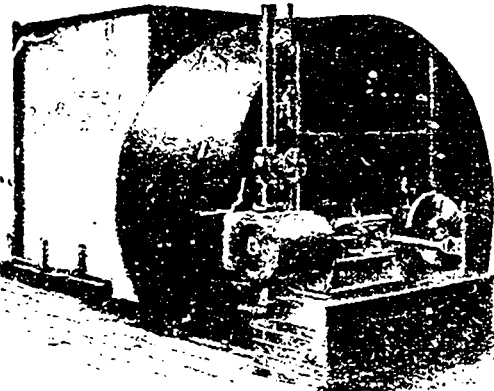
THE GOLDIE & McCULLOCH CO., LIMITED

GALT ———— ONTARIO ———— CANADA

WE MAKE Wheelock Engines, Corliss Engines, Ideal Engines, Boilers, Pumps, Flour Mill Machinery, Oat Meal Mill Machinery, Oat Meal Steam Pan Kilns, Wood Working Machinery, Iron Pulleys, Wood Rim Split Pulleys, Shafting, Hangers, Gearing, Friction Clutch Pulleys, Friction Clutch Couplings, etc., Safes, Vaults and Vault Doors. Write for Catalogue.

Western Branch: 248 McDermott Ave., Winnipeg, Man.

Quebec Agents: ROSS & GREIG, Montreal, Que.



Steam Fans and Heaters

Our Heating and Drying system will interest you—write us.

Brick Dryers

These are of the latest improved type.

Moist Air Kilns

Both forced and natural draft. No checking, warping, or case-hardening.

Fans
Cupola Fans
Blowers
Exhausters

Lumber Trucks
Transfer Cars
Brick Cars
Brick Transfers

Dominion Heating & Ventilating Co., Limited

HESPELER, CANADA.

Successors to McEachran Heating and Ventilating Co.

When writing to Advertisers kindly mention THE CANADIAN MANUFACTURER.