

THE PROSPEROUS TOWN OF DUNCANS AND HEALTHY SURROUNDING DISTRICT

(Continued from last week.)
Quite recently Mr. C. H. Dickie and his associates have visited their anthracite coal claims on the north fork of the Koksilah river and brought back with them quite a collection of fossils and samples. There seems little doubt of the fact that the seams are really anthracite, everything points to a volcanic upheaval subsequent to the period

has been observed. The most westerly is at Coal point, on the south side. Deep cores at the entrance of Saanich inlet. From a seam here a few tons of coal have been excavated, but it appeared to be a good deal mixed with shale. The seam is 30 inches thick, and dips N 22 deg. E. 18 deg. I was unable to trace it beyond the opening. At the same locality, about 40 feet lower in the beds, there appears an argillaceous shale, which appears to be from 30 to 40 feet



MR. HARRY SMITH'S RESIDENCE

Mr. Harry Smith is the gentleman who first discovered mineral on Mount Sicker, he having staked what is now the famous Lenora mine, and has also evidenced a sincere desire to do everything in his power to advance the inter-

ests of Duncans. He will probably be a candidate for the legislature at the coming elections. It is his wish to be in the Conservative ranks. He is very popular, owns a large amount of property in the town, and should put up a very strong fight.

of the coal having been deposited. Volcanic action invariably turns bituminous coal into anthracite, hence the assumption that these fields will prove the genuine article. Considerable prospecting was done during the trip, revealing the fact that there were eight or nine seams, some of them perpendicular and the others at a very steep angle. It is the intention of the owners to thoroughly drill, and if proved satisfactory to establish an industry which will still further increase the volume of business of Duncans.

thick. Near the top of these beds there are many fragments of tree stems; six of these stems are upright, and appear to be in position in which they grew, sending the bark, consists of good, clear coal. On Mr. Cloakes' farm, three quarters of a mile eastward, following the strike of the beds, an opening has been made, and a seam was observed in the

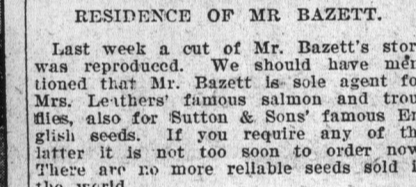
THE COWICHAN AREA.
Speaking of the Cowichan coal fields, Mr. James Richardson, in 1871, said: "The southwestern, or what may be termed the Cowichan area, is wholly occupied by productive coal measures. From the head of Cowichan bay into

which, however, did not appear to be more than an eighth of an inch thick. In a similar bed, on the north shore of Shoal bay, stems also impressions of veined leaves and root-like forms appear. Inoceramium is also found here and on Coal island in places. Similar beds are again exposed at the head of the bay, on the opposite side of a sharp synclinal fold, which here effects the measures.



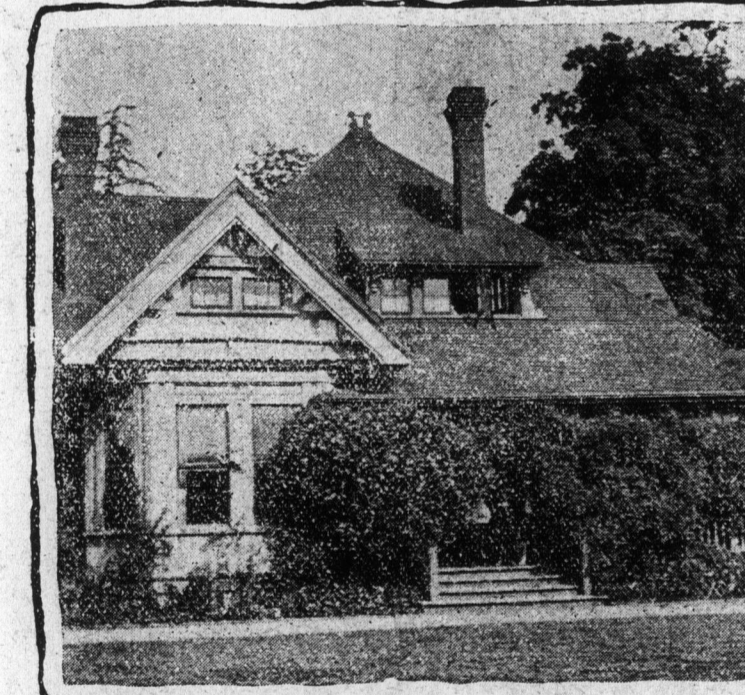
RESIDENCE OF MR. W. H. LOMAS.

Somewhat it extends northwest for a distance of six and a half miles to the base of Mount Prevost, which rises to 2,657 feet above the sea. In a southwest direction from the steamboat wharf, in Maple bay, it extends five and a



RESIDENCE OF MR. BAZETT.

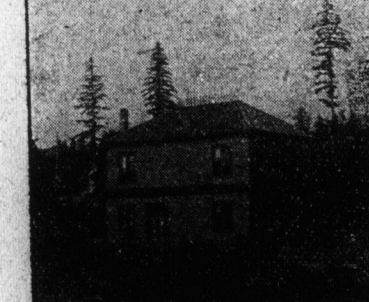
Last week a cut of Mr. Bazett's store was reproduced. We should have mentioned that Mr. Bazett is sole agent for Mrs. Leathers' famous salmon and trout flies, also for Sutton & Sons' famous English seeds. If you require any of the latter it is not too soon to order now. There are no more reliable seeds sold in the world.



THE BEAUTIFUL RESIDENCE OF MR. ASHDOWN GREEN.

lles to the flanks of the hills on the southwest side of Cowichan river, and thence southeasterly to the shores of Saanich inlet, south of Hatch point, re-appearing south of Coal point, and forming an irregular belt on the north end of North Saanich. It leaves Saanich at the south side of Shoal bay, but occupies Fleet, Knapp, Fynn, Coal, Russell, Jones, Donville, Hill, Comet, Gooch and Stuart islands, the latter in Washington territory. A narrow strip, lying on crystalline micaceous rocks, skirts the

An exposure, near the centre of the south shore of Coal island, shows about 30 feet of dark grey argillaceous shales, overlain by 70 or 80 feet of grey sandstone. The uppermost two feet of the shales enclose many fragments of tree stems, which have been converted into carbonate of iron. Impressions of well-formed, broad, distinctly ridged leaves were abundant on the surface of the shale layers. In one place what appeared to be roots were observed extending northward and northwest shores of Moresby island, from five to sometimes ten or twelve feet along the surface of the bed, with a thickness of one inch at one end, and gradually tapering to a quarter of an



COURT HOUSE, DUNCANS.

east and north side of Portland island, while another strip skirts the northwestern and northwest shores of Moresby island, from five to sometimes ten or twelve feet along the surface of the bed, with a thickness of one inch at one end, and gradually tapering to a quarter of an

At the end of the last week, the two fairs held annually at Duncans—one on July 1, and the other during the fall. The building is a good



STORE OF MESSRS. PITT & PETERSON, DUNCANS.

Two years ago these enterprising young men established the business, the home of which is in the building depicted above. Their business has steadily increased until now they are doing a very large amount and feel thoroughly satisfied with their venture. Their motto is "Fair

trade to one and all," and to judge from the number of patrons they have, it has paid, and paid handsomely. In addition to a very large general business, they have the exclusive agency for the following: Hamilton Powder Company, Sherwin-Williams painting and Simonds' renowned saws.

each at the other. These were wholly composed of good coal.

horizon, and to represent the same period of deposition as those which occur in the workable seams of coal in the Nanaimo area. The total thickness, however, is probably much less than in the latter area, and the evidence, from the exposures so far observed, which are often continuous for a considerable thickness, does not favor the probabi-

"About the middle of the southwest of Donville island, at the base of a cliff of grey sandstone, similar to that in regular, thin seams, were observed.

"From the character of the measures in the Cowichan area, as above described, they would appear to be on the same horizon, and to represent the same period of deposition as those which occur in the workable seams of coal in the Nanaimo area. The total thickness, however, is probably much less than in the latter area, and the evidence, from the exposures so far observed, which are often continuous for a considerable thickness, does not favor the probabi-



EXHIBITION BUILDING, DUNCANS, B. C.

Two fairs are held annually at Duncans—one on July 1, and the other during the fall. The building is a good

serviceable hall, and the grounds are extensive and include a baseball diamond.

SHOWMAN'S DREAD OF ANIMALS "GOING BAD"

From Frank Bostock's "The Training of Wild Animals." Copyright, 1903, The Century Co.
What those who have charge of wild animals in captivity, and especially trainers, dread most of all is the "going bad." It is a condition of temperament on the part of the animal which, when once it has taken upon it, is almost incurable. It is a condition which, when once it has taken upon it, is almost incurable. It is a condition which, when once it has taken upon it, is almost incurable.

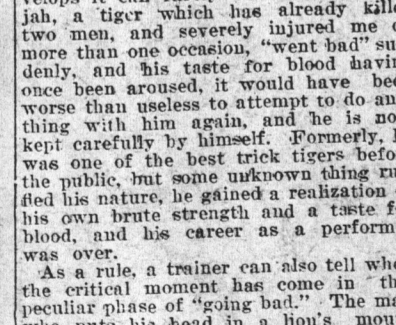
Others troubled with the same complaint. Elephants also "go bad," and there is even more danger with these huge beasts than with lions and tigers; for they may break down a hill and cause a great number of people, besides causing an immense amount of damage by tearing down and destroying property.

er it was a bad omen, for not one of the whole building had the slightest idea that the fire was even then gaining ground. There was not the faintest smell of smoke or any other indication to give warning that one of the greatest catastrophes I ever had was just coming upon me. Not more than a quarter of an hour before the men had been round according to the usual custom, to see that everything was safe and in 2000 order, but nothing was noticed out of the way, and until the flames suddenly burst forth no one had any idea that there was the least danger or trouble at hand.

Another curious instance of animal instinct occurred in the winter of 1902-03 at Ocala, Florida. Mme. Planka had taken her lions there to perform, and as soon as they arrived every one noticed that the animals, especially the lions, were restless and uneasy at night, and that they behaved very strangely. It is customary, each after arriving at a place, to turn the animals out into a steel arena for exercise, as of course it is quite impossible to give them any exercise at all while on a long journey. The moment the lions entered the arena, instead of stretching themselves luxuriously and pacing up and down in their usual manner, they stopped short, with ears back and noses to the ground, and commenced to sniff in the most peculiar manner.

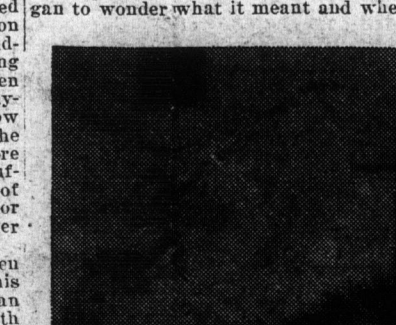
When the time for the performance came, not one of the animals would move out of its cage. It is not unusual for wild animals to get restless in some way, but it is extremely unusual for them all, at one and the same time, to refuse to come out of their cages at the command of the trainers. The majority of wild-animal trainers are superstitious, and many of them believe to wonder what it meant and what

graveyard in Ocala, and although most of the bodies had been removed, there was, of course, every probability that some of the remains were still under the ground. This, of course, solved the mystery, and our great relief, for, having found out the cause, we very soon applied a remedy, and it was not long before we had the lion and the animals removed some distance off. As soon as the animals were removed, the lions were again taken out into the arena, and in a very short time they had scratched away the sand and sawn and dug up the earth, and it was only just in time that the lions were once more removed to their traveling cages in exceedingly ugly and dangerous moods. Many solutions were offered by various people—especially by those who knew nothing whatever about animals—but no satisfactory answer could be found. We thought of the change of climate, of air, scene, and food. The lions had grown accustomed to change of air and climate, and the food was the same kind that they had been accustomed to in captivity. We were offered by various people—especially by those who knew nothing whatever about animals—but no satisfactory answer could be found. We thought of the change of climate, of air, scene, and food. The lions had grown accustomed to change of air and climate, and the food was the same kind that they had been accustomed to in captivity.



LION VIEW CLAIMS.

View of Lake View claims, owned by Messrs. Shelton, Prepost and Douglas, on Mount Gordon near Cowichan Lake.

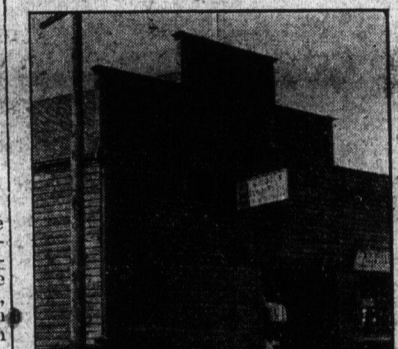


LION VIEW CLAIMS.

30 feet of dark grey argillaceous shales, overlain by 70 or 80 feet of grey sandstone. The uppermost two feet of the shales enclose many fragments of tree stems, which have been converted into carbonate of iron. Impressions of well-formed, broad, distinctly ridged leaves were abundant on the surface of the shale layers. In one place what appeared to be roots were observed extending northward and northwest shores of Moresby island, from five to sometimes ten or twelve feet along the surface of the bed, with a thickness of one inch at one end, and gradually tapering to a quarter of an

of the existence of workable seams coal in this area." The probabilities are that Mr. Richardson did not visit the site of the seams belonging to Mr. Dickie and his associates, who state that there is abundance of coal in sight on the surface and as already stated there are eight or nine seams. It is earnestly hoped that the venture will prove a successful one for the island and to Victoria.

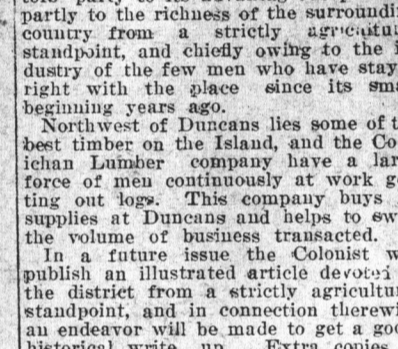
Duncans is only 40 miles from Victoria on the C. N. railway and would scarcely be recognized from the train as the very important and busy centre that it is. To the casual observer the place looks so peaceful that one is apt to fancy that it is one of the places where every day is Sunday. Such, however, is not the case and one is surprised to learn that the volume of business done in Duncans is greatly in excess of that done in far larger places. Duncans' business growth has been gradual but certain, and now we doubt if there is any single town in British Columbia so uniformly prosperous. The town is indefatigably for its prosperity to various factors



TZOUHALEM HOTEL, DUNCANS.

Price Bros. Proprietors.

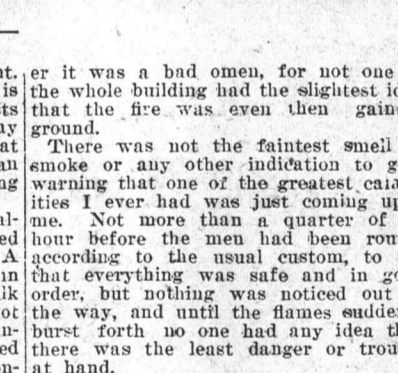
This handsome and well-appointed house situation and comfort. With deep airy veranda, smoking room, parlor, billiard room, Messrs. Price Bros., who operate both room and bar, it has everything that a Mr. John Derry, who has everything that a daily stage is run, the drive being one of the most interesting and delightful it is possible to take among the very many on the island. The Tzouhalem (pronounced Shalahem) has very recently been built, hotel daily at 12.30 p.m. In the cut but he seen both of the stages ready to start of the very finest tourist resorts on the island; it could not be otherwise, considering its very excellent management, Chan Hotel, burnt in 1901.



C. DOBSON, DUNCANS.

Buggies, Harness and all kinds of Farming Machinery.

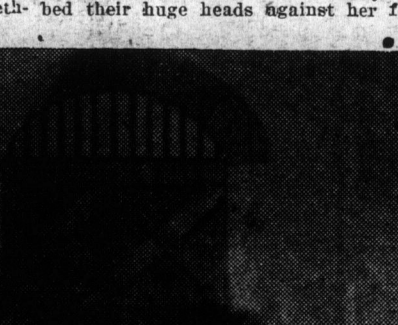
Started ten years ago Mr. Dobson has been made, and now Mr. Dobson started business in Duncans, in the front has an fine store and building as man in the business on the island. Increased, the need for more space was prepared to do anything on the above pressing, and a 20x40 feet addition was lines, having full facilities for all classes built. Recently a 40x40 feet addition of building and repair work.



OFFICES OF THE TYE COPPER COMPANY.

Mr. Skinner, surveyor and Mr. J. H. Whitton, secretary of the Cowichan Creamery.

But at the time they would not let her touch them. Each one let her know that she must keep her distance, or it would be a serious matter. Neither would they perform at the accustomed words of command. Indeed, their manner grew so forbidding and dangerous that at last she dared not even go near them.



LION VIEW CLAIMS.

At last this was mentioned to the chief of police and one of two old residents, and we then discovered that the lion had been pitched directly over an old



TZOUHALEM HOTEL, DUNCANS.

Price Bros. Proprietors.



C. DOBSON, DUNCANS.

Buggies, Harness and all kinds of Farming Machinery.

Started ten years ago Mr. Dobson has been made, and now Mr. Dobson started business in Duncans, in the front has an fine store and building as man in the business on the island. Increased, the need for more space was prepared to do anything on the above pressing, and a 20x40 feet addition was lines, having full facilities for all classes built. Recently a 40x40 feet addition of building and repair work.



OFFICES OF THE TYE COPPER COMPANY.

Mr. Skinner, surveyor and Mr. J. H. Whitton, secretary of the Cowichan Creamery.

But at the time they would not let her touch them. Each one let her know that she must keep her distance, or it would be a serious matter. Neither would they perform at the accustomed words of command. Indeed, their manner grew so forbidding and dangerous that at last she dared not even go near them.



LION VIEW CLAIMS.

At last this was mentioned to the chief of police and one of two old residents, and we then discovered that the lion had been pitched directly over an old

Industrial of

Visiting Journalists Lighted With Visit and Lumber

Yesterday Said to Most Interesting Trip

Visit Paid to Tye Logging Camp

It was the best day in Canada. The Mr. John Derry, who has everything that a daily stage is run, the drive being one of the most interesting and delightful it is possible to take among the very many on the island. The Tzouhalem (pronounced Shalahem) has very recently been built, hotel daily at 12.30 p.m. In the cut but he seen both of the stages ready to start of the very finest tourist resorts on the island; it could not be otherwise, considering its very excellent management, Chan Hotel, burnt in 1901.

The party included Messrs. E. B. Osborn, London; Harold Hamilton; W. J. McAlicee, an Midland Express, British Yarrow, Chronicle; Neil Munro, The Denver; Barclay McCool; Bellair; John Derry, H. Field; Henry Alexander, Aberdeen; Mayor McCool; N. Yates; Mrs. Yates; Aid. Barnard, Aid. Di White (representative of government); Geo. H. Coyle (of the C. P. R.); May (of the E. & N. rail; representing the Y. & N. Association); S. J. Bogle (editor of the C. B. Bogle).

Proceeding by the special train was a beauties seen from the being duly admired, the south, which town is 1145. Messrs. Marshall agent of the Tye smelter the party and escorted of visitors to the Tye large ore beds, covering both from the twisting run, the party arrived at the smelter the sulphur dross were roasted, and the sulphur readiness for the smelt. The big plant of Vancouver Island mines upon the slabs of cord. The cars had dunned the re from the movable bridge after a short walk along row-gauge railway. The run, the party arrived at the smelter the sulphur dross were roasted, and the sulphur readiness for the smelt. The big plant of Vancouver Island mines upon the slabs of cord. The cars had dunned the re from the movable bridge after a short walk along row-gauge railway. The run, the party arrived at the smelter the sulphur dross were roasted, and the sulphur readiness for the smelt. The big plant of Vancouver Island mines upon the slabs of cord. The cars had dunned the re from the movable bridge after a short walk along row-gauge railway. The run, the party arrived at the smelter the sulphur dross were roasted, and the sulphur readiness for the smelt. The big plant of Vancouver Island mines upon the slabs of cord. The cars had dunned the re from the movable bridge after a short walk along row-gauge railway. The run, the party arrived at the smelter the sulphur dross were roasted, and the sulphur readiness for the smelt. The big plant of Vancouver Island mines upon the slabs of cord. The cars had dunned the re from the movable bridge after a short walk along row-gauge railway. The run, the party arrived at the smelter the sulphur dross were roasted, and the sulphur readiness for the smelt. The big plant of Vancouver Island mines upon the slabs of cord. The cars had dunned the re from the movable bridge after a short walk along row-gauge railway. The run, the party arrived at the smelter the sulphur dross were roasted, and the sulphur readiness for the smelt. The big plant of Vancouver Island mines upon the slabs of cord. The cars had dunned the re from the movable bridge after a short walk along row-gauge railway. The run, the party arrived at the smelter the sulphur dross were roasted, and the sulphur readiness for the smelt. The big plant of Vancouver Island mines upon the slabs of cord. The cars had dunned the re from the movable bridge after a short walk along row-gauge railway. The run, the party arrived at the smelter the sulphur dross were roasted, and the sulphur readiness for the smelt. The big plant of Vancouver Island mines upon the slabs of cord. The cars had dunned the re from the movable bridge after a short walk along row-gauge railway. The run, the party arrived at the smelter the sulphur dross were roasted, and the sulphur readiness for the smelt. The big plant of Vancouver Island mines upon the slabs of cord. The cars had dunned the re from the movable bridge after a short walk along row-gauge railway. The run, the party arrived at the smelter the sulphur dross were roasted, and the sulphur readiness for the smelt. The big plant of Vancouver Island mines upon the slabs of cord. The cars had dunned the re from the movable bridge after a short walk along row-gauge railway. The run, the party arrived at the smelter the sulphur dross were roasted, and the sulphur readiness for the smelt. The big plant of Vancouver Island mines upon the slabs of cord. The cars had dunned the re from the movable bridge after a short walk along row-gauge railway. The run, the party arrived at the smelter the sulphur dross were roasted, and the sulphur readiness for the smelt. The big plant of Vancouver Island mines upon the slabs of cord. The cars had dunned the re from the movable bridge after a short walk along row-gauge railway. The run, the party arrived at the smelter the sulphur dross were roasted, and the sulphur readiness for the smelt. The big plant of Vancouver Island mines upon the slabs of cord. The cars had dunned the re from the movable bridge after a short walk along row-gauge railway. The run, the party arrived at the smelter the sulphur dross were roasted, and the sulphur readiness for the smelt. The big plant of Vancouver Island mines upon the slabs of cord. The cars had dunned the re from the movable bridge after a short walk along row-gauge railway. The run, the party arrived at the smelter the sulphur dross were roasted, and the sulphur readiness for the smelt. The big plant of Vancouver Island mines upon the slabs of cord. The cars had dunned the re from the movable bridge after a short walk along row-gauge railway. The run, the party arrived at the smelter the sulphur dross were roasted, and the sulphur readiness for the smelt. The big plant of Vancouver Island mines upon the slabs of cord. The cars had dunned the re from the movable bridge after a short walk along row-gauge railway. The run, the party arrived at the smelter the sulphur dross were roasted, and the sulphur readiness for the smelt. The big plant of Vancouver Island mines upon the slabs of cord. The cars had dunned the re from the movable bridge after a short walk along row-gauge railway. The run, the party arrived at the smelter the sulphur dross were roasted, and the sulphur readiness for the smelt. The big plant of Vancouver Island mines upon the slabs of cord. The cars had dunned the re from the movable bridge after a short walk along row-gauge railway. The run, the party arrived at the smelter the sulphur dross were roasted, and the sulphur readiness for the smelt. The big plant of Vancouver Island mines upon the slabs of cord. The cars had dunned the re from the movable bridge after a short walk along row-gauge railway. The run, the party arrived at the smelter the sulphur dross were roasted, and the sulphur readiness for the smelt. The big plant of Vancouver Island mines upon the slabs of cord. The cars had dunned the re from the movable bridge after a short walk along row-gauge railway. The run, the party arrived at the smelter the sulphur dross were roasted, and the sulphur readiness for the smelt. The big plant of Vancouver Island mines upon the slabs of cord. The cars had dunned the re from the movable bridge after a short walk along row-gauge railway. The run, the party arrived at the smelter the sulphur dross were roasted, and the sulphur readiness for the smelt. The big plant of Vancouver Island mines upon the slabs of cord. The cars had dunned the re from the movable bridge after a short walk along row-gauge railway. The run, the party arrived at the smelter the sulphur dross were roasted, and the sulphur readiness for the smelt. The big plant of Vancouver Island mines upon the slabs of cord. The cars had dunned the re from the movable bridge after a short walk along row-gauge railway. The run, the party arrived at the smelter the sulphur dross were roasted, and the sulphur readiness for the smelt. The big plant of Vancouver Island mines upon the slabs of cord. The cars had dunned the re from the movable bridge after a short walk along row-gauge railway. The run, the party arrived at the smelter the sulphur dross were roasted, and the sulphur readiness for the smelt. The big plant of Vancouver Island mines upon the slabs of cord. The cars had dunned the re from the movable bridge after a short walk along row-gauge railway. The run, the party arrived at the smelter the sulphur dross were roasted, and the sulphur readiness for the smelt. The big plant of Vancouver Island mines upon the slabs of cord. The cars had dunned the re from the movable bridge after a short walk along row-gauge railway. The run, the party arrived at the smelter the sulphur dross were roasted, and the sulphur readiness for the smelt. The big plant of Vancouver Island mines upon the slabs of cord. The cars had dunned the re from the movable bridge after a short walk along row-gauge railway. The run, the party arrived at the smelter the sulphur dross were roasted, and the sulphur readiness for the smelt. The big plant of Vancouver Island mines upon the slabs of cord. The cars had dunned the re from the movable bridge after a short walk along row-gauge railway. The run, the party arrived at the smelter the sulphur dross were roasted, and the sulphur readiness for the smelt. The big plant of Vancouver Island mines upon the slabs of cord. The cars had dunned the re from the movable bridge after a short walk along row-gauge railway. The run, the party arrived at the smelter the sulphur dross were roasted, and the sulphur readiness for the smelt. The big plant of Vancouver Island mines upon the slabs of cord. The cars had dunned the re from the movable bridge after a short walk along row-gauge railway. The run, the party arrived at the smelter the sulphur dross were roasted, and the sulphur readiness for the smelt. The big plant of Vancouver Island mines upon the slabs of cord. The cars had dunned the re from the movable bridge after a short walk along row-gauge railway. The run, the party arrived at the smelter the sulphur dross were roasted, and the sulphur readiness for the smelt. The big plant of Vancouver Island mines upon the slabs of cord. The cars had dunned the re from the movable bridge after a short walk along row-gauge railway. The run, the party arrived at the smelter the sulphur dross were roasted, and the sulphur readiness for the smelt. The big plant of Vancouver Island mines upon the slabs of cord. The cars had dunned the re from the movable bridge after a short walk along row-gauge railway. The run, the party arrived at the smelter the sulphur dross were roasted, and the sulphur readiness for the smelt. The big plant of Vancouver Island mines upon the slabs of cord. The cars had dunned the re from the movable bridge after a short walk along row-gauge railway. The run, the party arrived at the smelter the sulphur dross were roasted, and the sulphur readiness for the smelt. The big plant of Vancouver Island mines upon the slabs of cord. The cars had dunned the re from the movable bridge after a short walk along row-gauge railway. The run, the party arrived at the smelter the sulphur dross were roasted, and the sulphur readiness for the smelt. The big plant of Vancouver Island mines upon the slabs of cord. The cars had dunned the re from the movable bridge after a short walk along row-gauge railway. The run, the party arrived at the smelter the sulphur dross were roasted, and the sulphur readiness for the smelt. The big plant of Vancouver Island mines upon the slabs of cord. The cars had dunned the re from the movable bridge after a short walk along row-gauge railway. The run, the party arrived at the smelter the sulphur dross were roasted, and the sulphur readiness for the smelt. The big plant of Vancouver Island mines upon the slabs of cord. The cars had dunned the re from the movable bridge after a short walk along row-gauge railway. The run, the party arrived at the smelter the sulphur dross were roasted, and the sulphur readiness for the smelt. The big plant of Vancouver Island mines upon the slabs of cord. The cars had dunned the re from the movable bridge after a short walk along row-gauge railway. The run, the party arrived at the smelter the sulphur dross were roasted, and the sulphur readiness for the smelt. The big plant of Vancouver Island mines upon the slabs of cord. The cars had dunned the re from the movable bridge after a short walk along row-gauge railway. The run, the party arrived at the smelter the sulphur dross were roasted, and the sulphur readiness for the smelt. The big plant of Vancouver Island mines upon the slabs of cord. The cars had dunned the re from the movable bridge after a short walk along row-gauge railway. The run, the party arrived at the smelter the sulphur dross were roasted, and the sulphur readiness for the smelt. The big plant of Vancouver Island mines upon the slabs of cord. The cars had dunned the re from the movable bridge after a short walk along row-gauge railway. The run, the party arrived at the smelter the sulphur dross were roasted, and the sulphur readiness for the smelt. The big plant of Vancouver Island mines upon the slabs of cord. The cars had dunned the re from the movable bridge after a short walk along row-gauge railway. The run, the party arrived at the smelter the sulphur dross were roasted, and the sulphur readiness for the smelt. The big plant of Vancouver Island mines upon the slabs of cord. The cars had dunned the re from the movable bridge after a short walk along row-gauge railway. The run, the party arrived at the smelter the sulphur dross were roasted, and the sulphur readiness for the smelt. The big plant of Vancouver Island mines upon the slabs of cord. The cars had dunned the re from the movable bridge after a short walk along row-gauge railway. The run, the party arrived at the smelter the sulphur dross were roasted, and the sulphur readiness for the smelt. The big plant of Vancouver Island mines upon the slabs of cord. The cars had dunned the re from the movable bridge after a short walk along row-gauge railway. The run, the party arrived at the smelter the sulphur dross were roasted, and the sulphur readiness for the smelt. The big plant of Vancouver Island mines upon the slabs of cord. The cars had dunned the re from the movable bridge after a short walk along row-gauge railway. The run, the party arrived at the smelter the sulphur dross were roasted, and the sulphur readiness for the smelt. The big plant of Vancouver Island mines upon the slabs of cord. The cars had dunned the re from the movable bridge after a short walk along row-gauge railway. The run, the party arrived at the smelter the sulphur dross were roasted, and the sulphur readiness for the smelt. The big plant of Vancouver Island mines upon the slabs of cord. The cars had dunned the re from the movable bridge after a short walk along row-gauge railway. The run, the party arrived at the smelter the sulphur dross were roasted, and the sulphur readiness for the smelt. The big plant of Vancouver Island mines upon the slabs of cord. The cars had dunned the re from the movable bridge after a short walk along row-gauge railway. The run, the party arrived at the smelter the sulphur dross were roasted, and the sulphur readiness for the smelt. The big plant of Vancouver Island mines upon the slabs of cord. The cars had dunned the re from the movable bridge after a short walk along row-gauge railway. The run, the party arrived at the smelter the sulphur dross were roasted, and the sulphur readiness for the smelt. The big plant of Vancouver Island mines upon the slabs of cord. The cars had dunned the re from the movable bridge after a short walk along row-gauge railway. The run, the party arrived at the smelter the sulphur dross were roasted, and the sulphur readiness for the smelt. The big plant of Vancouver Island mines upon the slabs of cord. The cars had dunned the re from the movable bridge after a short walk along row-gauge railway. The run, the party arrived at the smelter the sulphur dross were roasted, and the sulphur readiness for the smelt. The big plant of Vancouver Island mines upon the slabs of cord. The cars had dunned the re from the movable bridge after a short walk along row-gauge railway. The run, the party arrived at the smelter the sulphur dross were roasted, and the sulphur readiness for the smelt. The big plant of Vancouver Island mines upon the slabs of cord. The cars had dunned the re from the movable bridge after a short walk along row-gauge railway. The run, the party arrived at the smelter the sulphur dross were roasted, and the sulphur readiness for the smelt. The big plant of Vancouver Island mines upon the slabs of cord. The cars had dunned the re from the movable bridge after a short walk along row-gauge railway. The run, the party arrived at the smelter the sulphur dross were roasted, and the sulphur readiness for the smelt. The big plant of Vancouver Island mines upon the slabs of cord. The cars had dunned the re from the movable bridge after a short walk along row-gauge railway. The run, the party arrived at the smelter the sulphur dross were roasted, and the sulphur readiness for the smelt. The big plant of Vancouver Island mines upon the slabs of cord. The cars had dunned the re from the movable bridge after a short walk along row-gauge railway. The run, the party arrived at the smelter the sulphur dross were roasted, and the sulphur readiness for the smelt. The big plant of Vancouver Island mines upon the slabs of cord. The cars had dunned the re from the movable bridge after a short walk along row-gauge railway. The run, the party arrived at the smelter the sulphur dross were roasted, and the sulphur readiness for the smelt. The big plant of Vancouver Island mines upon the slabs of cord. The cars had dunned the re from the movable bridge after a short walk along row-gauge railway. The run, the party arrived at the smelter the sulphur dross were roasted, and the sulphur readiness for the smelt. The big plant of Vancouver Island mines upon the slabs of cord. The cars had dunned the re from the movable bridge after a short walk along row-gauge railway. The run, the party arrived at the smelter the sulphur dross were roasted, and the sulphur readiness for the smelt. The big plant of Vancouver Island mines upon the slabs of cord. The cars had dunned the re from the movable bridge after a short walk along row-gauge railway. The run, the party arrived at the smelter the sulphur dross were roasted, and the sulphur readiness for the smelt. The big plant of Vancouver Island mines upon the slabs of cord. The cars had dunned the re from the movable bridge after a short walk along row-gauge railway. The run, the party arrived at the smelter the sulphur dross were roasted, and the sulphur readiness for the smelt. The big plant of Vancouver Island mines upon the slabs of cord. The cars had dunned the re from the movable bridge after a short walk along row-gauge railway. The run, the party arrived at the smelter the sulphur dross were roasted, and the sulphur readiness for the smelt. The big plant of Vancouver Island mines upon the slabs of cord. The cars had dunned the re from the movable bridge after a short walk along row-gauge railway. The run, the party arrived at the smelter the sulphur dross were roasted, and the sulphur readiness for the smelt. The big plant of Vancouver Island mines upon the slabs of cord. The cars had dunned the re from the movable bridge after a short walk along row-gauge railway. The run, the party arrived at the smelter the sulphur dross were roasted, and the sulphur readiness for the smelt. The big plant of Vancouver Island mines upon the slabs of cord. The cars had dunned the re from the movable bridge after a short walk along row-gauge railway. The run, the party arrived at the smelter the sulphur dross were roasted, and the sulphur readiness for the smelt. The big plant of Vancouver Island mines upon the slabs of cord. The cars had dunned the re from the movable bridge after a short walk along row-gauge railway. The run, the party arrived at the smelter the sulphur dross were roasted, and the sulphur readiness for the smelt. The big plant of Vancouver Island mines upon the slabs of cord. The cars had dunned the re from the movable bridge after a short walk along row-gauge railway. The run, the party arrived at the smelter the sulphur dross were roasted, and the sulphur readiness for the smelt. The big plant of Vancouver Island mines upon the slabs of cord. The cars had dunned the re from the movable bridge after a short walk along row-gauge railway. The run, the party arrived at the smelter the sulphur dross were roasted, and the sulphur readiness for the smelt. The big plant of Vancouver Island mines upon the slabs of cord. The cars had dunned the re from the movable bridge after a short walk along row-gauge railway. The run, the party arrived at the smelter the sulphur dross were roasted, and the sulphur readiness for the smelt. The big plant of Vancouver Island mines upon the slabs of cord. The cars had dunned the re from the movable bridge after a short walk along row-gauge railway. The run, the party arrived at the smelter the sulphur dross were roasted, and the sulphur readiness for the smelt. The big plant of Vancouver Island mines upon the slabs of cord. The cars had dunned the re from the movable bridge after a short walk along row-gauge railway. The run, the party arrived at the smelter the sulphur dross were roasted, and the sulphur readiness for the smelt. The big plant of Vancouver Island mines upon the slabs of cord. The cars had dunned the re from the movable bridge after a short walk along row-gauge railway. The run, the party arrived at the smelter the sulphur dross were roasted, and the sulphur readiness for the smelt. The big plant of Vancouver Island mines upon the slabs of cord. The cars had dunned the re from the movable bridge after a short walk along row-gauge railway. The run, the party arrived at the smelter the sulphur dross were roasted, and the sulphur readiness for the smelt. The big plant of Vancouver Island mines upon the slabs of cord. The cars had dunned the re from the movable bridge after a short walk along row-gauge railway. The run, the party arrived at the smelter the sulphur dross were roasted, and the sulphur readiness for the smelt. The