

New Shipment

Lipton's Groceries

— AT —
Steer's Ltd.

Lipton's Celebrated English Biscuits.

Marie, Albert, Tea, Digestive, Wafer, Orange Creams, Tennis Chocolate, Assorted Creams, etc., etc. Lipton's Arrowroot Biscuits and Lipton's Cakes in 1-lb. tins.

Lipton's Delicious Table Jellies, in 1-pt. tablets
Lipton's Table Jellies bear an exceedingly high reputation for Quality and Flavour. None Better!
Lipton's Scotch Orange Marmalade, in 1-lb. Glass Jars. Give this a trial on your breakfast table.
Lipton's Raspberry Jam, in 1-lb. Glass Jars.
Lipton's Essence of Coffee and Chicory, in 5-oz. bottles.
Lipton's Famous Cream Caramels, in 1/4-lb. tins
Lipton's Butter Scotch—"The Real Stuff."

As we import this very popular Sweetmeat in large air-tight tins, we can guarantee the quality and freshness of it, and as it is imported in bulk our price for same is very moderate.

Steer's, Ltd.

NEW SUITINGS

in light colours and weights for Summer wear.

A splendid variety to select from. Samples submitted to you on receipt of postal.

John Maunday
TAILOR & CLOTHIER
ST. JOHN'S, N.F.

DUE TO ARRIVE!

950 Tons
CHOICE WELSH ANTHRACITE COAL

Specially selected at the mine by our manager.
NOW BOOKING ORDERS.

M. Morey & Co., Ltd.

Phones: Office 376. P.O. Box 1052.
Yard 1426. St. John's.

Notice to Parents!

Have your Children Normal Vision, or are they suffering from EYE STRAIN?
This is a very important question and demands your immediate attention.

The future success of your child may depend upon your action now.

Children suffering from Eye Strain are working under a great handicap, which properly fitted Glasses will correct.

Begin the school year right. Have your children's eyes examined by us, and if necessary PROPER GLASSES FITTED.

R. H. TRAPNELL, Ltd.
Jewellers & Opticians, 197 Water Street.

The only way to know our SPECIALS is your acceptance of our invitation to call and look them over or send for Samples.
To Know Bon Marche Specials is to Want Bon Marche Specials.

MATS! — — — **MATS!**
VELVET ROPE DOOR MATS 24 x 14 75c.
27 x 16 \$1.05
30 x 18 \$1.30
SPECIAL HEAVY RUBBER DOOR MATS \$2.50 each

Our DRESS DEPARTMENT is full of SPECIALS.
Range of Dress Tweeds 85c.
Dress Plaids 90c.
Navy & Black Serge 89c.
4 1/2" Heavy Melton \$1.10
We are the Home of GOOD SERGES at all Prices.

HOSIERY! — — — **HOSIERY!**
Specials: Black & Coloured Hose 22c.
OUR RANGE OF ENGLISH SILK HOSIERY 95c. \$1.30

UNDERWEAR! — — — **UNDERWEAR!**
Ladies' Strap Vests 19c.
Silk Camisoles 45c.
White Embroidered Under-skirts \$1.40
SPECIAL: WHITE DOT MUSLIN BLOUSES 59c. each.
Men's Blue Chambray Work Shirts 79c.
Ladies' Half Sleeve Vests, 22c.
Ladies' Strap Fcy. Vests, 55c.
Ladies' Moire' Underskirts 95c.
Men's Summer Sox; all colours 19c.

Bon Marche
WATER STREET ST. JOHN'S

Labradorite

Always we have prided ourselves on the quality of our Labradorite and refused to place on sale stones that did not do credit to the peculiar beauty that is its chief charm. We have now received the first samples of our new stock and they fulfil in every way our ideas of what Labradorite should really be like when made into jewellery.

Specially selected and extra well polished stone made into an assortment of Pendants—Bean, Oval and Square shape are the chief items in our new selection.

T. J. DULEY & CO. LTD.
THE RELIABLE
JEWELLERS & OPTICIANS
WATER STREET.

Because a Camel grows hair it doesn't follow that all Belting is

"CAMEL HAIR" BELTING

"CAMEL HAIR" BELTING is made only by

F. REDDAWAY & COMPANY, MANCHESTER.

A total of over 100,000,000 Feet of this Belting has been manufactured. It has been shipped to every port in the Seven Seas, and not one failure recorded!

BECOME A USER TO-DAY!

Other Reddaway Products are:
"CAMEL" FIRE HOSE. SUCTION HOSE.
AIR HOSE. WATER HOSE.
STEAM HOSE.
"CAMELATA" BELTING. RUBBER BELTING.

WM. HEAP & Co., Ltd.

PHONE 1830. AGENTS for NFDL.

A Speedy Settlement.

Means everything to the man who wants to rebuild after a fire. Delay at such a time only adds to the loss. We have made it our speciality to adjust Losses promptly and fully and this custom has made us many friends and patrons.

The Largest Number of Policy-holders in Nfld.
QUEEN INSURANCE COMPANY
OF AMERICA, and
GREAT AMERICAN INSURANCE CO'Y.,
OF NEW YORK.
GEO. H. HALLEY, LIMITED, Agents.

Job Boots!

BIG VALUES
In American Footwear.



Men's Tan Work Boots,
Good Heavy Soles.
Price: \$3.25 & \$3.75 per pair.

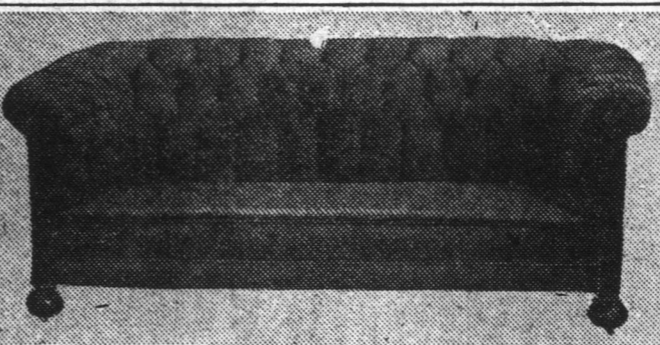


Men's Fine
Dark Tan Laced Boots,
All Fitted with Rubber Heels. Made on Good
Roomy American Last.
\$4.50, 5.00, 5.50 & 6.00 the pair.

Extra Value in each pair.
Mail Orders Receive Prompt Attention.
Special Prices to Wholesale Buyers.

F. Smallwood,
Water Street, The Home of Good Shoes.

Guaranteed Products!



Buy Upholstered Furniture that stays upholstered. Don't experiment with Chesterfields and Chairs that have nothing to recommend them but attractive prices. We make all our own frames from the best selected hardwoods and insure a solid foundation to build upon. The springs are manufactured of the best oil tempered Premier Spring Wire. Nothing but the best quality of stuffing materials are used and all work is carefully inspected before it leaves our factory.

POPE'S
Furniture and Mattress Factory

EST. 1860. PHONE 659
GEORGE & WALDEGRAVE STS.

Ex S. S. "ROSALIND," DUE THURSDAY

70 cases ORANGES—Counts 216-282,
50 half barrels PEARS.
50 barrels APPLES—Early.
50 boxes APPLES.

BURT & LAWRENCE
14 NEW GOWER STREET.

Nfld. Government Railway.

S.S. PROSPERO.
NORTHERN STEAMSHIP SERVICE

Freight for ports of call on the above route, as advertised in Directory, and extra ports, namely—Hoping Harbor, Williamsport, Canada Harbor, St. Julien, Ship Cove, accepted at Dock Shed to-day, Monday, from 9 a.m. to 5 p.m. and up to noon to-morrow Tuesday.

PASSENGER NOTICE.
S.S. PROSPERO will leave Dry Dock Wharf at 9 a.m. Wednesday, September 10th, for usual ports of call en route to Cook's Harbor.

Nfld. Government Railway.

RED CROSS LINE!

NEW YORK. HALIFAX. ST. JOHN'S

SCHEDULE OF SAILINGS FOR SEPTEMBER

From New York at 11 a.m.	From St. John's at 12 o'clock, noon
Sept. 13th ROSALIND Sept. 13th	Sept. 20th ROSALIND Sept. 20th
Sept. 20th SILVIA Sept. 27th	Sept. 27th SILVIA Oct. 4th

THROUGH RATES QUOTED TO ALL PORTS.
Round trip tickets issued at special rates with six months stop-over privileges.

BOYRING & COMPANY, 17 Battery Place, New York
General Agents.
G. S. CAMPBELL & CO., HALIFAX, N.S.
HARVEY & CO., LTD., ST. JOHN'S, NFDL.
Agents.

CANADIAN NATIONAL RAILWAYS

TORONTO TO—DETROIT CHICAGO.
TRAVEL BY NATIONAL LINES
"INTERNATIONAL LIMITED."
Leaves Bonaventure Station, Montreal, at 10.00 a.m. Daily
Direct connection from Halifax or North Sydney by "OCEAN LIMITED."
For Fares, Reservations, etc., apply to
R. H. WEBSTER, General Agent

GENTLEMEN:—
THIS IS OUR BARGAIN WEEK TO YOU FOR

Shirts and Caps

and we are showing most exclusive lines with attractive prices. For a short time we are giving a 15 per cent. reduction on above lines, and consequently you can buy a good Shirt or Cap from us from \$1.25 up. See our Striped and Plain Blue English Broad Cloth Shirts, at \$3.50.

E. D. SPURRELL 365 Water Street St. John's.
WM. SPURRELL 210 Duckworth St. Branch: Grand Falls

"STANYL"

(DISINFECTANT FLUID)
Non-caustic and perfectly soluble with water, forming a milky opalescent mixture which will remain without separation. Contains 16-17 p.c. Tar Acids.

FORMULA:
By special arrangement with Messrs. H. E. Stevenson & Co. Manufacturing Chemists, London, England. Contractors to H. M. Government.

Established 1880.
Awards: London. Calcutta. Chicago. Vienna.

THE STANDARD MFG. CO., LIMITED
ST. JOHN'S, NEWFOUNDLAND.

Forty-Five Years in the Service of the Public—The Evening Telegram