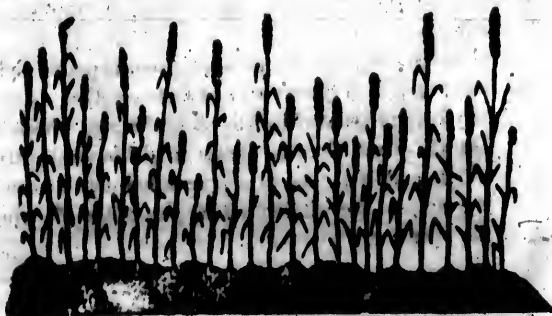




DRILLED WHEAT.

In drilled wheat the plants are stronger and more healthy, the heads larger, and more uniform in size and height, better filled, ripen earlier, and not so liable to rust, the reason being that the grain is planted regularly and at a uniform depth, comes up together, it is not so much affected by drought, it is better nourished and protected, and has a free circulation of air between the rows.



BROADCAST WHEAT.

These cuts represent the growth of drilled and broadcast wheat. In broadcast wheat the plants are of unequal height, the heads very unequal, some well filled while others are empty, some nearly ripe and

other
ripen
grain
are
amin
cover
head,
from
are lo

SEPA

No.
1. P
4. P
5.
6.
7.
8.
9. P
12. P
13. N
14. B
15. G

30.
34. D
31. G
32.
33.

1. I
of the
left end
2. I
of Grain
3. I
lowing

Wheel
"
"
"
"

4. T
and sh
Drill w
The
on the