

Community

- Food prices B2
- Coin collecting B3
- Ancient craft B6

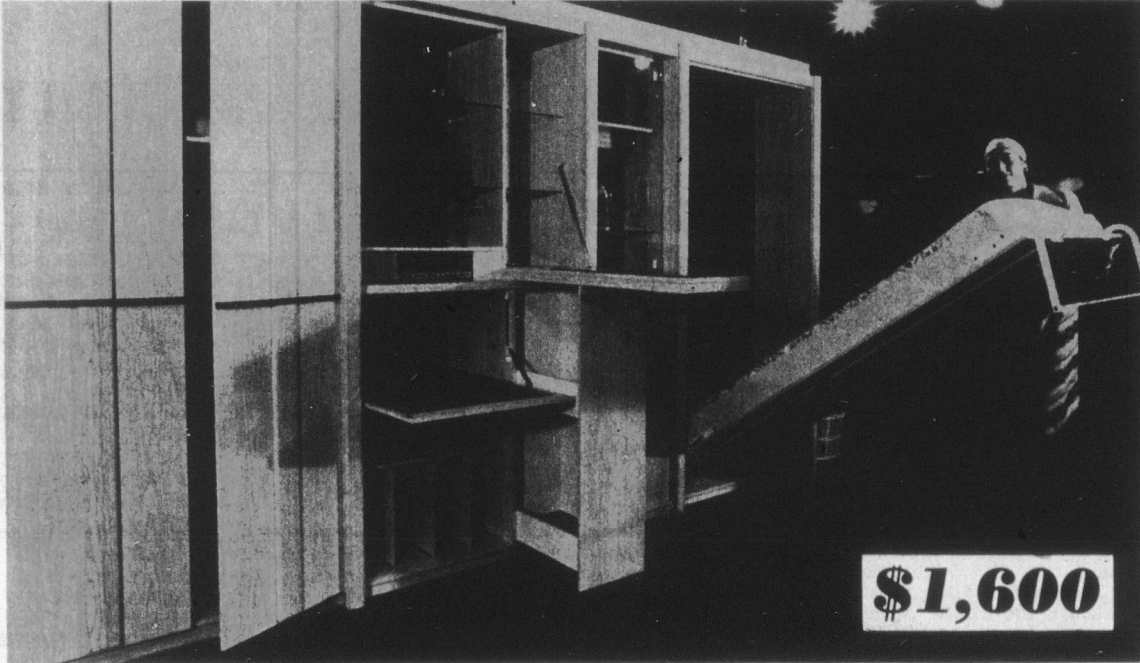
Something old and something new can be seen at The Furniture Show

By BETTIE BRADLEY

Mirror used as inlay, the look of the thirties as seen in Art Deco, a revival of the most unusual pieces of the Victorian era, furniture designed in modules that stand alone or build

into units, hand-crafting as shown in multiple types of inlay — it's all being shown at the Furniture Show this year. There seems to be a sense of freedom in current design and it will be interesting to see if the public taste supports the eclectic

growth. The public is invited to attend the show on Wednesday from 6-10 p.m. and Thursday from 5-10 p.m. The location is the International Centre on Dixon Road in Mississauga.



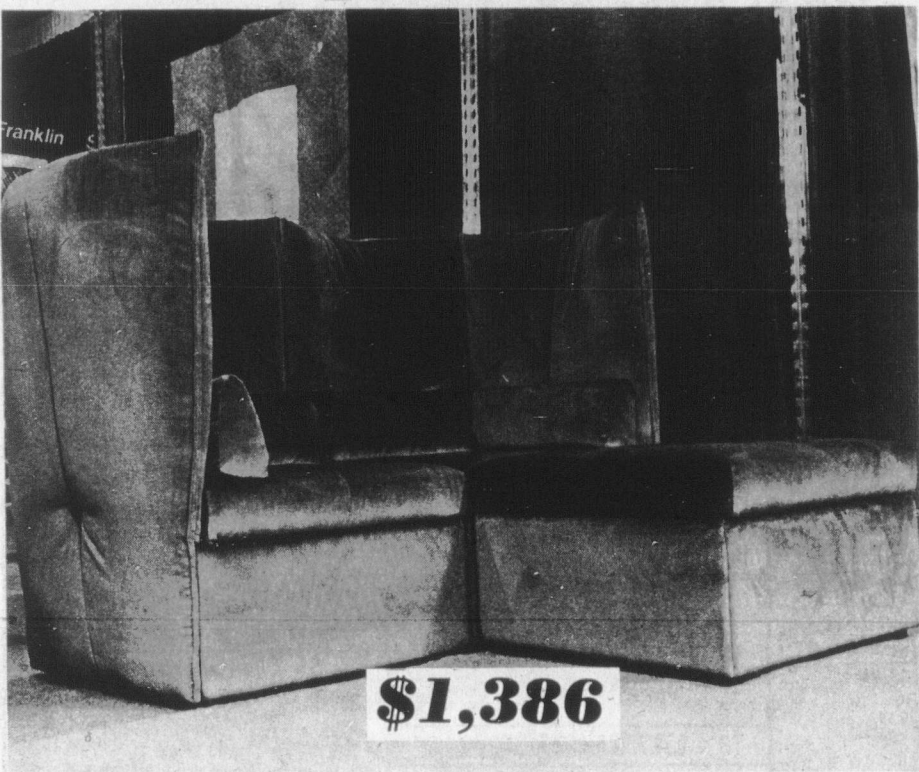
\$1,600

A startlingly useful unit from Interline Furniture of Hawkesbury. For \$1,600, count the blessings: In Carolina pine with a natural finish — a Murphy bed, a wardrobe unit, bar/desk, stereo set, curio cabinet, assorted drawers and shelves. Francine Jones, illustrates how the unit opens.



\$3,500

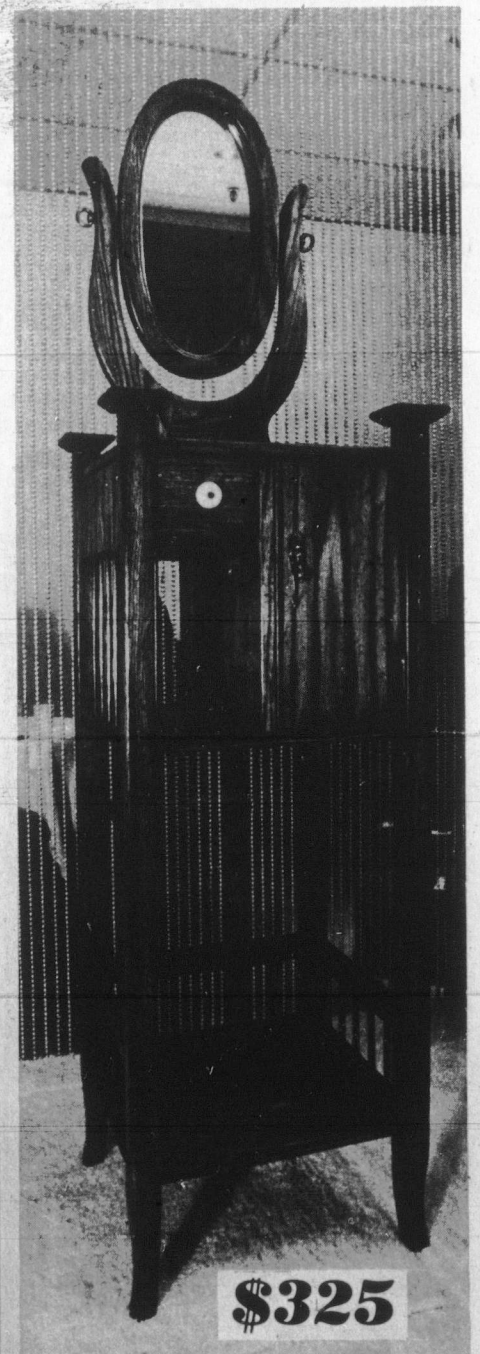
The designs of Impact 2000 concentrate on Art Deco and the Harlow look that pulls us back to the 30's. Micheline Lestage is showing a sectional grouping tan discs on navy that can combine in many ways. The tables are made up of multifaceted mirror sections that combine with plain mirror. Six upholstered pieces and two mirrored tables will cost about \$3,500.



\$1,386

Right here in Mississauga: Airborne Arconas had a show stopper with their completely enveloping high-back sections (retail price about \$462 a section). It is built with a steel frame base with the foam moulded around the metal. The modules can be connected in infinite arrangements.

Photos by
Ron Pozzer
and
Gorm Larsen



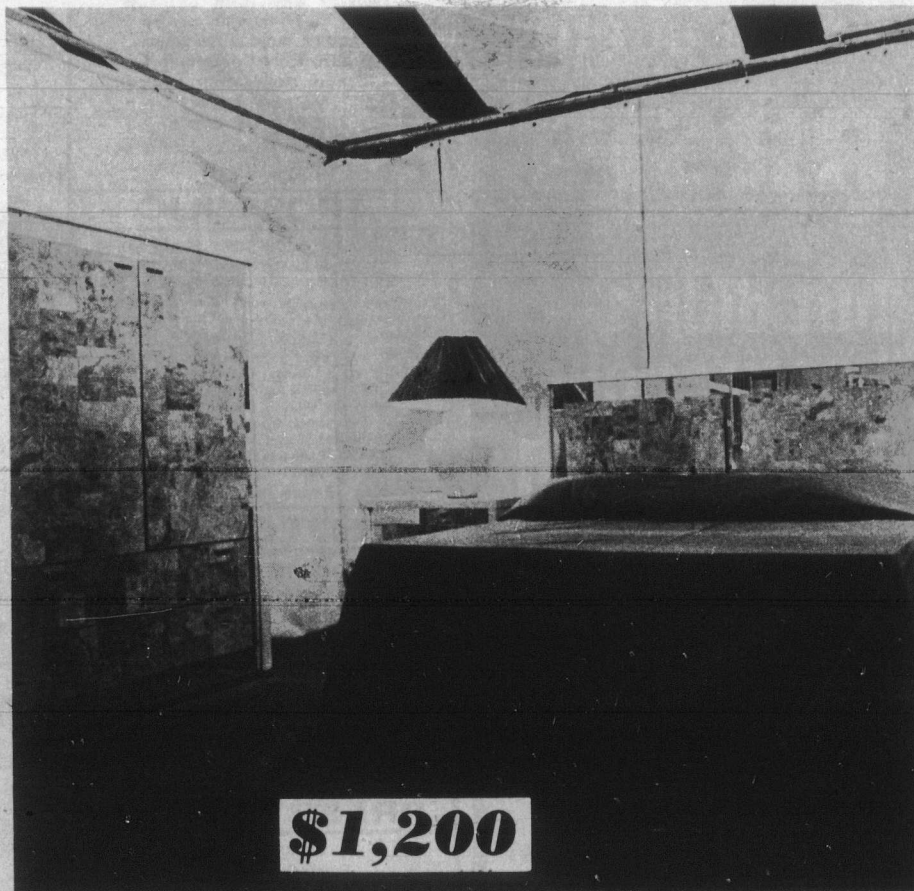
\$325

Dielcraft-Electrohome are experimenting with Victorian Revival. If there is dealer response, 120 pieces are already on the drawing boards from which the best will be selected and produced. The shaving stand (about \$325) in distressed oak with spindle trim has the traditional porcelain button pull as well as a brass pull.



\$1,200

Metal and wood combine to give an Oriental effect in many designs from Elite Interiors Limited of Montreal. The wood is South American ebony offset with tortoise shell enamelled copper inlay and inlaid marquetry reproducing a bamboo design. A signed set and one of the most exotic in the show, the cost is \$1,200. Complete with table and six chairs, \$2,700.



\$1,200

Treco Inc. of St. Romuald, near Quebec City attracted buyers with an unusual bedroom group (five pieces will retail at about \$1,200). The construction is solid birch with inserts of a pressed

laminated that were reminiscent of either cork or burl walnut. The mirror trim is a crack and scratch-resistant plexi-glass.