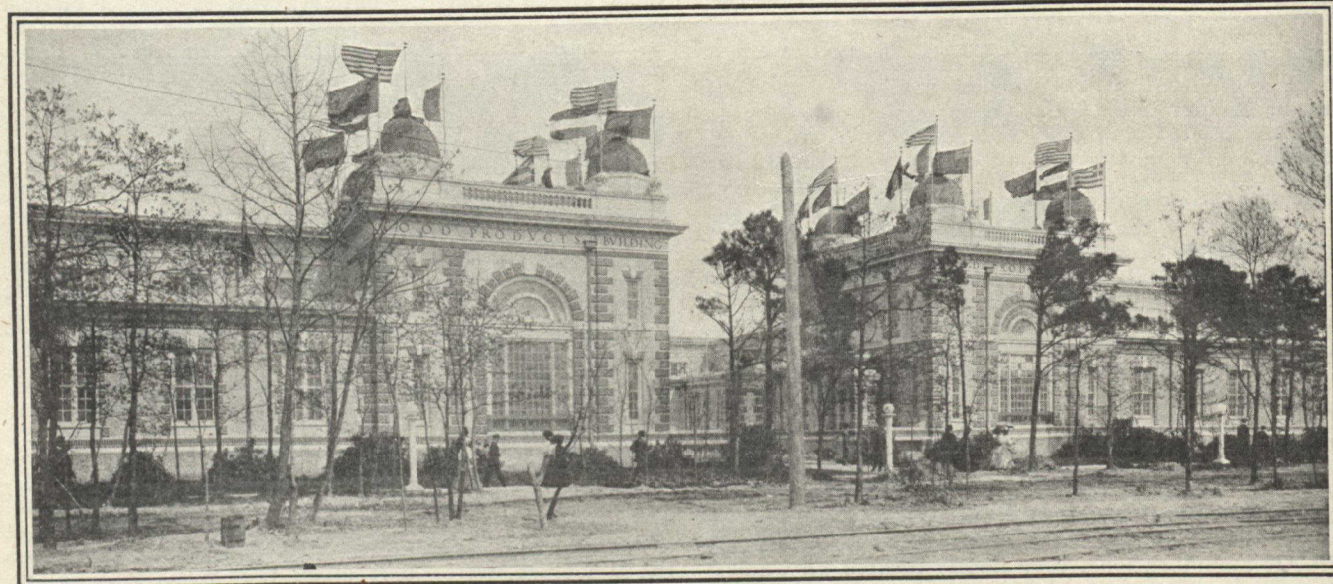


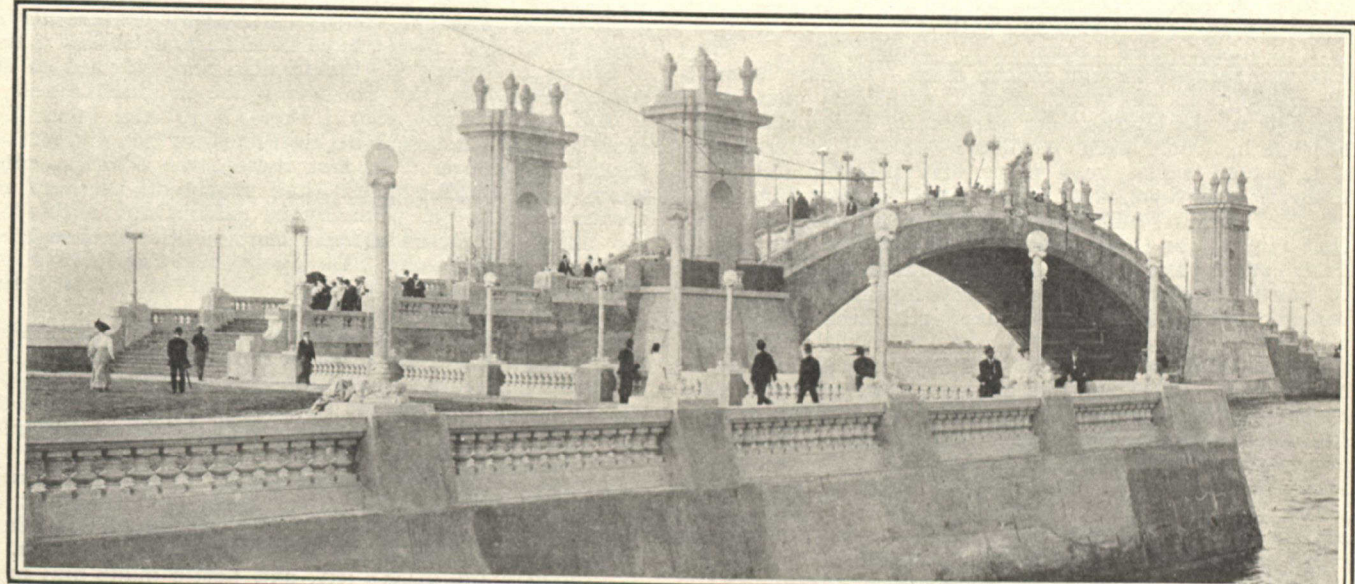
General View of the Jamestown Exposition, looking from the Great Arch of the Government Pier.



Food Products Palace—Typical of the Larger Buildings.

SOME  
STRIKING  
PHOTOGRAPHS  
FROM THE  
JAMESTOWN  
EXPOSITION

1607 1907



Concrete Arch which unites the two arms of the Government Pier—Greatest span of any concrete arch in the world.

