

THE QUARTERLY REPORT

—OF—

METROPOLITAN FASHIONS,

A Magnificent Colored Plate illustrating the Latest Styles.

THE QUARTERLY REPORT is issued in March, May, September and November. Each number includes a handsome Chromo-Lithographic Plate, illustrating Fashions for Ladies and Children, and a Magazine containing a Description of the Plate, articles upon Millinery and other Modes, items of interest to Ladies, etc.

The Plate is 24x30 inches in size, and is of exceptional value to Dressmakers, Milliners and Manufacturers of Ladies' Clothing. It is handsomely printed in Fine Colors upon richly finished Plate Paper, and is in itself a work of art without a superior in Chromo-Lithography.

The styles illustrated on the Plate and described in the Book are accurate, timely and elegant, and are the latest and best productions of our Artists in Europe and America. Patterns corresponding with these styles are issued simultaneously with them, and are at once placed on sale in all our various Depots and Agencies in the United States.



FIGURE No. 355 P.

TERMS FOR THIS PUBLICATION:

- One Year's Subscription for the Quarterly Report, as described above, \$1.00
 - Single Copies of the Quarterly Report, comprising the Lithographic Plate and Descriptive Book,40
 - One Year's Subscription for the Quarterly Report and Monthly Delineator, \$2.00
 - Single Copies of the Quarterly Report, with the Monthly Delineator of corresponding issue, .50
- INVARIABLY PAYABLE IN ADVANCE.



FIGURES Nos. 355 P and 356 P.—LADIES' COSTUME.—These two figures illustrate the same Pattern.—Ladies' Costume No. 3771 (copyright), price 40 cents.



FIGURE No. 364 P.—LADIES' CAPE WRAP.—This illustrates Pattern No. 3733 (copyright), price 35 cents.

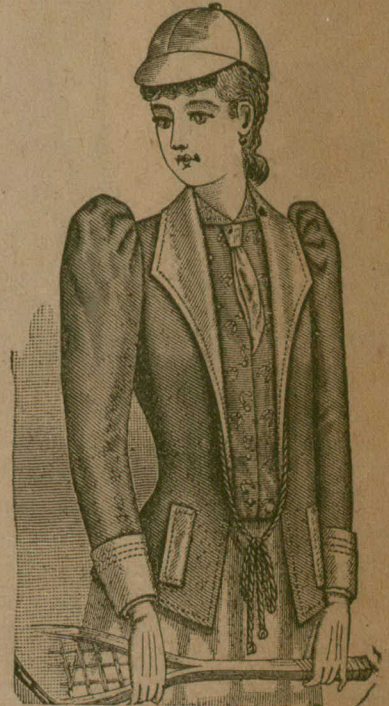


FIGURE No. 378 P.—MISSES' TENNIS GARMENTS.—This consists of Misses' Jacket No. 3767 (copyright), price 25 cents; Blouse No. 3737 (copyright), price 25 cts.; and Cap No. 3166 (copyright), price 10 cts.

SPECIAL NOTICE.

To any one sending us \$2.00 for a Subscription to the DELINEATOR and QUARTERLY REPORT, with 10 cents additional to prepay transportation charges, we will also forward a copy of the METROPOLITAN CATALOGUE of the current issue until the same shall be exhausted. If the current edition is exhausted at the time we receive the Subscription, we will send a copy of the succeeding number immediately upon its publication. See advertisement of the DELINEATOR and METROPOLITAN CATALOGUE elsewhere in this issue.

ADDRESS:

The Butterick Publishing Co. (Limited),

7, 9 and 11 West 13th St., N. Y.

THE QUARTERLY REPORT, when sent by mail from our New York Office to any part of the United States, Canada or Mexico, is post-paid by us. When the publication is ordered sent on subscription to any other country, 16 cents extra for postage must accompany the subscription price.

Subscriptions will not be received for a shorter term than One Year, and are always payable in advance.

In making Remittances, if possible, send by Draft, Check, Express Money-Order or Post-Office Money-Order. Do not risk a Postal-Note or Money in a letter without registering it.

We have no Club Rates, and no Commissions are allowed to any one on Subscriptions sent us.