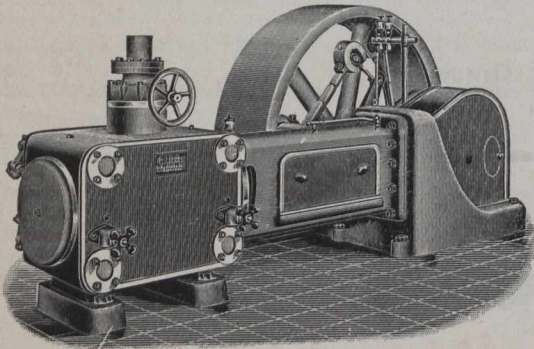




HYDRAULIC PRESSES - PUMPS - JACKS PERRIN - TORONTO

(Illustration shows Hydraulic Jack for Chicago Drainage Canal.)

ROBB CORLISS ENGINES



Have the Armstrong-Corliss valve gear, which will operate at a higher speed than the ordinary releasing gear.

This valve gear does not depend on springs or dash pots for closing and runs without noise.

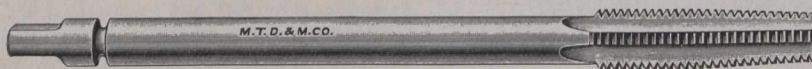
The wearing parts of the valve gear are enclosed in a casing and run in oil so that friction is reduced to a minimum.

Robb Engineering Co.
AMHERST, N.S. LIMITED

DISTRICT OFFICES:

Canadian Express Building, Montreal, R. W. ROBB, Manager.
Traders Bank Building, Toronto, WM. McKAY, Manager.
Union Bank Building, Winnipeg, W. F. PORTER, Manager.
Grain Exchange Building, Calgary, J. F. PORTER, Manager.

"MORSE" TAPPER TAPS



As illustrated are specially adapted for use in single and multiple tapping machines. Designed and tempered for use in hot pressed or rough iron work.

We carry in stock regular Tapper Taps with blank ends from $\frac{1}{4}$ in. to $1\frac{1}{2}$ in. in lengths of 11, 12, 14 and 15 inches.

Prices on application for special shanks

Morse Twist Drill and Machine Co.
NEW BEDFORD, Mass., U. S. A.

CONTRACTORS' EQUIPMENT CARRIED IN STOCK.

Champion Rock Crushers Wheeled Scrapers Dump Wagons
Champion Road Graders Drag Scrapers Dump Carts
Champion Road Rollers Buck Scrapers Dump Cars
Wheel Barrows, Road Plows and Tools.

MARION DREDGES FOR DRAINAGE, DYKING AND IRRIGATION SERVICE.

London Concrete Machinery Co.'s

Face down Block Machines, Cement Mixers, Cement Brick Machines, Tile Moulds, Cement Workers' Tools,

Contractors', Loggers', and Railroad Supplies.

A. G. BROWN & CO.

CALGARY, Alta. 1048 Westminster Ave., VANCOUVER, B.C.
P.O. Box 228. Phone 2002. Phone 4804.

UNIVERSITY OF TORONTO FACULTY OF APPLIED SCIENCE AND ENGINEERING

Courses in—

1. CIVIL ENGINEERING.
2. MINING ENGINEERING.
3. MECHANICAL ENGINEERING.
4. ARCHITECTURE.
5. ANALYTICAL AND APPLIED CHEMISTRY.
6. CHEMICAL ENGINEERING.
7. ELECTRICAL ENGINEERING.

Leading to ACADEMIC and PROFESSIONAL Degrees

For Calendar and other information apply to the Secretary

A. T. LAING