

New Brunswick's Greatest Shoe House!

Trench Boots

for the Boys at the Front!

The
Palmer
Make

\$11.50
and
\$12.50

Waterbury & Rising
LIMITED
King St. Union St. Main St.

COAL!

Telephone M. 1913

The best we know how to buy, care-
fully prepared and carefully delivered
CONSUMERS' COAL CO. Limited
331 Charlotte Street



G. B. CHOCOLATES

A few favorites—Corollas, Almontinos, Almond Crispetts, Nougatins, Bourn Almonds, Maple Walnuts, Caramels, Cream Drops, Milk Chocolate Creams, Fruit Creams, etc. Display Cards with goods.
EMERY BROS. - 82 Germain St.
Selling Agents for Ganong Bros., Ltd.

Watches

For Gentlemen

With the business and professional man alike, the Watch plays a vital part in his daily life and, for this reason, accuracy is of first importance. The case, however, is a main essential, and, while affording the needed protection, must also convey the proper prestige.

Our modern, thin model is among the most popular styles of today, being prominently featured in our select showing of Gentlemen's Watches in all of which the movements are strictly reliable.

FERGUSON & PAGE
Diamond Importers and Jewellers 41 King Street

There's a Different Taste

To BUTTERNUT BREAD

a flavor like crushed nuts --
a taste that makes you hungry --

Get a Loaf from Your Grocer

Grateful Warmth

For Chilly Days

Perfection Smokeless
Oil Heater

will give you an abundant sure supply of steady, clean, odorless, healthful heat, when and where you want it. The Perfection is light, durable, safe. You can't turn it too high.

PRICES: \$4.15, \$4.70, \$6.50, \$8.25
(Sporting Dept.—Second Floor.)

King Street **W. H. THORNE & CO., LTD.** Market Square

THE SOLDIER AND THE SHEEP

Crops of Wool and Lambs Can be
Raised by Men Who Cannot
Till the Soil

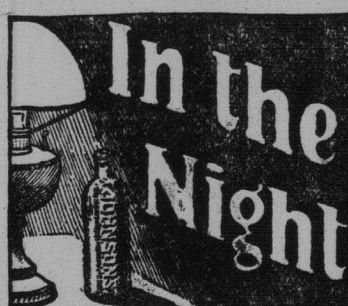
"The Soldier and the Hen" was the title of a paragraph published recently describing the way in which soldiers had taken up poultry-raising at some of the Military Hospitals Commission's convalescent homes. J. H. Geddes, director of the Dominion government's experimental farm system, has sent the Military Hospital Commission the following article on "Sheep farming for returned soldiers."

Agriculturally, Canada is and has been a land of big things. Sheep, however, though great money-makers in many other countries, have received anything but the attention their possibilities well merit in this country. Yet every province in Canada has been proven to include extensive areas highly suitable to the successful pursuit of the sheep-breeding industry, and climatic conditions seem favorable in practically all parts of the Dominion.

One peculiarity of this industry is its suitability to either fertile or inferior lands. Much money has been made with sheep on farms where no other line of farming could possibly have been followed. Another peculiarity is that it may be conducted either on a small scale, earning a satisfactory income, or on a very large scale, building a fortune. The single-handed farmer with his tiny little flock of high grade ewes is sure of a comfortable income, while the rancher with his wide scattered flocks and his hired shepherds may be easily on a financial par with the railway president.

To the soldiers returning war-weary to peaceful pursuits in this country, in my opinion no single line should prove more attractive than sheep-farming. Even though previously entirely innocent of any knowledge in this connection, one really interested can easily and quickly get into the business. A few months spent where sheep are kept, then a little bit of cheap land, a few nice grade ewes with a right good ram, and the thing is on its way.

The initial investment is small, the daily labor is light, and the sum of work for the year much less than with most other lines of live stock. Besides, the



When pain is severe and doctors distant, you are fortunate if you have a bottle of wonderful soothing, healing and penetrating
JOHNSON'S ANODYNE LINIMENT
(Dorchester's Preparation)
Over 100 Years of Splendid Success
Internally for coughs, colds, sore throat, cramps, chills, etc. Externally for rheumatism, sprains, strains, muscular rheumatism, etc.
MADE IN CANADA

work is of such a character that, great physical strength or robust health is not essential to success, though these conditions are usually most necessary to farming.

There is plenty of room, there are many farms ready and waiting for thousands of small sheep farmers in Nova Scotia, New Brunswick, Quebec and Ontario, to say nothing of the prairie provinces and British Columbia. Anyone at all interested in making a living in this country, with a minimum expenditure in capital and labor, cannot afford to neglect the possibilities of this most attractive industry, for its present returns are most satisfactory, and even when war prices fall there is no reason why its future should not continue to prosper.

ROPE NOT BROKEN

Charles Swanton, stevedore, in explaining to George Ramsey of 297 Brussels street, sustained his injury on Monday while assisting in discharging cargo from the sulphur steamer Freda, said that Mr. Ramsey was standing on a staging on the dock as the buckets were being hoisted from the hold of the ship and their contents dumped into waiting wheelbarrows. One of the buckets swung back and struck Mr. Ramsey on the back of the head and shoulder. He said that the accident was caused by the breaking of the rope which held the tackle, as was reported.

Frank Skinner
— Importer of Millinery —
60 KING STREET

Millinery

Full Line of Trimmed Hats for
Women and Misses

Very smart ready-to-wear Tailored Hats, in black plush and velvet.

Large assortment of attractive Untrimmed Hats, in close-fitting Turbans, large and small sailor effects, mushrooms and pokes.

Daintily Trimmed Hats for Children, in all the newest designs.

Gold Soap
The Big, Good Laundry

Weigh a cake of Gold Soap. See how much heavier it is than any other laundry soap.

Try a cake of Gold Soap. See how much better it is than any other laundry soap.



STORES OPEN
8-30
CLOSE AT
6 P.M.
SATURDAYS
10 P.M.

MANCHESTER ROBERTSON ALLISON LIMITED

KING ST.
GERMAIN ST.
AND
MARKET
SQUARE

SWEATER TIME



It is not necessary to speak of the growing popularity of Sweaters—The man or boy who has not enjoyed the solid comfort of wearing one is the rare exception.

For any occasion that demands a little extra warmth in clothing they are almost indispensable.

With our immense variety at values beyond question, made of the finest wool, in all the popular shades and newest stitches known in the knitting trade, in a dozen different colors and weights ranging from light to extra heavy. We are confident of satisfying any reasonable demand.

Mens Sizes \$1.50 to \$11.50
Boys 75c to \$4.00

Also a large variety of Jerseys with button neck and shoulders so handy for the little folks \$1.15 to \$2.30

Navy Worsted Canadian and English Makes in several weights and qualities \$1.15 to \$3.25

MEN'S FURNISHING DEPARTMENT

Special Interest is Being Displayed in Our LARGE VELVET DRESS HATS

These charming models are in greater variety of shape than ever, are extremely fashionable and may be worn with almost any style of costume.

Trimmed and Tailored Hats

In all the new color and trimming combinations, a new note in this display is the SILK BEAVER IN MANNISH SAILOR EFFECTS—Smart and striking in shape and material.

OUR MILLINERY WORK ROOM is in the hands of our usual competent staff prepared to execute special orders at short notice.

MILLINERY DEPARTMENT

New Fur Trimmings So Much Worn

Jeanette in Black, White, Brown and Grey
1 in. 60c, 2 in. \$1.10, 3 in. \$1.45 a yard
Silver Grey 85c. and \$1.50 a yard
Chinchilla 85c. and \$1.50 a yard
Brown Fur \$1.20, \$1.70 a yard

Fitch 85c. and \$1.50 a yard
Moleskin 90c. and \$1.55 a yard
Seal 85c. and \$1.50 a yard
Bear Goat \$1.10, \$1.50, \$1.90, \$2.75, \$3.85

IN DRESS TRIMMING DEPARTMENT

PHILPS' Interesting WEEK END ANNOUNCEMENT

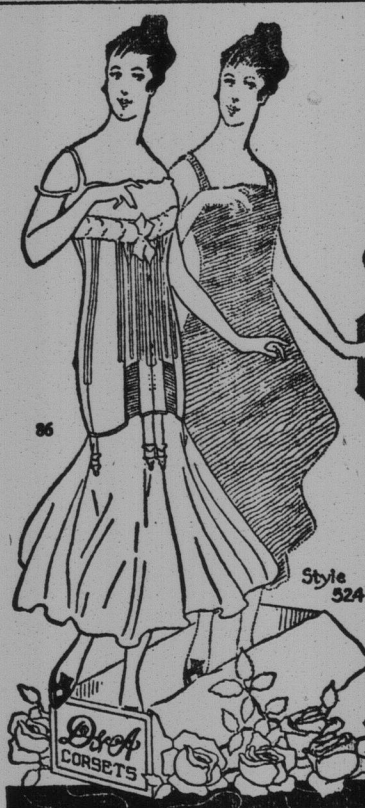
All our Food Stuffs are clean and fresh
Does this fact appeal to You?

Sugar Is Up Again! 11 lbs. of the finest Granulated For \$1.00	50c. tin Royal Baking Powder, 44c.	FRUITS, ETC.
Call. Succatash, tins 25c.	Snider's Pure Tomato Catsup, 20c. bot.	California Quinces, selected stock, 35c. doz.
Call. Lima Beans, tins 25c.		Call. Tokay Grapes 25c. doz.
Heinz Mince Meat, large tins, 35c.		Rocky Ford Cantaloupes 25c. each
Call. Ripe Olive, tins 30c.		Large size Grapefruit 2 for 25c.
35c. Bot. Stuffed Olives 30c.		NEW CALIFORNIA FIGS
		Fresh and luscious 30c. lb.
BAKER'S COCOA, new stock just received. 1/4 lb. tins 15c., 1/2 lb. tins, 23c.; 1 lb. tins, 45c.	MacLAREN'S IMPERIAL CHEESE New stock, all nice and fresh. Imperial Cheese, in jars 25c. Pinet Cheese, in cakes, 15c. Cream Cheese, in cakes, 2 sizes, 15c. and 25c.	Call. Sweet Oranges, 2 sizes, 50c. and 60c. doz.
30c. Bot. Imperial Peanut Butter, 25c.		Choice Gravenstein Apples 50c. peck
20c. Bot. Imperial prepared Mustard, 17c.	3 lb. tin Chivers English Pure Strawberry Preserves 40c.	Cauliflower 20c. each
		Sweet Potatoes 6 for 25c.

THE PHILPS' STORES - Douglas Ave. and Main

PHONE MAIN 886.

Where Cleanliness and Agreeable Surroundings Do Not Increase Prices



D & A CORSETS

New corsets must precede new costumes—See the D & A and the La Diva models, which give the best foundation for correct style dresses.

Despite the excellence of their material and workmanship, these corsets, which are made in Canada, sell at from \$1.00 to \$3.00 less than similar imported models. They are sold by most of the progressive corset departments.

Dominion Corset Co., Quebec, Montreal and Toronto

HARRY WOODRUFF DEAD

Actor Who Began His Career at Nine
Dies of Bright's Disease

Harry Woodruff, an actor in New York for many years, who was best known for his appearance in "Brown of Harvard," in which he played the leading role during the 1905-6-7-8, died suddenly last week, in his room at the Algonquin Hotel, 54 West Forty-fourth street, New York. He had been in ill health for the last six months, and death resulted from an attack of acute Bright's disease.

Mr. Woodruff was born in Jersey City and was in his forty-seventh year. He made his debut on the old Fourteenth

Street Theatre stage at the age of nine as one of the children's chorus in "Pinetree."

For several years after he played boys' parts in various companies, among which was that of Adelaide Neilson, then playing in "Cymbeline." After two seasons with Edwin Thorne in "The Black Flag," he joined the stock company of the late A. M. Palmer at the Madison Square Theatre. Later he appeared in "Alabama," by Augustus Thomas, and in "Surrender," by the same author. He also created the role of Ben Hur in the adaptation of General Lew Wallace's novel.

In addition, Mr. Woodruff appeared with Nat Goodwin in "When We Were Twenty-one." One of his last appearances was in the leading role of "Prince of a Night." His last work was in

moving pictures in California about six months ago.

Mr. Woodruff was a graduate of Harvard University. He was a member of the Lambs Club. A brother in Pittsburgh survives him.

Bertie took his new young lady out for a motor drive one day recently, and thinking that she might regard him as a slacker for not being in uniform determined to show his pluck. If he could not face the Germans he could at least defy the local police, so he set to and made the car travel. "We are doing 53 miles an hour, darling," he shouted presently. "You don't seem very alarmed. You are very brave." "Yes, dear," gasped the little darling, swallowing a few more pecks of dust; "I'm full of grit."