

QUEEN EAST IS FORGING AHEAD

Higher Prices Are Looked for With the Extensive Developments in District.

VALUES STATIONARY

Frontage on Thorfare Only Now Responding to Neighborhood Improvements.

Fully two hundred men are engaged in tearing up the south track of the East Queen street line in preparation for the relaying of a new car track along that thoroughfare. A force of the Toronto Railway Company men laid the temporary track, over which the cars are running during the repair work by the city workmen.

The track being taken up has been in place over fifteen years and the fact that the rails have withstood the immense traffic over them as long as they have is, according to the foreman on the work because they are of better steel than is being used at the present time. The rails were imported from Germany.

Business men along Queen East are well pleased because of the improvement to be made to the street railway tracks for the poor condition of the roadbed has been the cause of much unfavorable comment from those who came to visit the district. In fact, people living in the district declare that the bad condition of the tracks has done a great deal toward keeping real estate values along Queen East at such a low figure. It is thought that the repairs under way will do a great deal toward stimulating the real estate market in this section and that property will experience a marked increase during the next few months. East Queen street is what might be termed an old-money district of Toronto for its growth today is as marked as that of some of the commonly known districts as St. Clair street and Danforth avenue. While real estate values along these two last named thoroughfares have ascended with leaps and bounds Queen East has been held at prices even lower than the residential sections in the newer districts.

The transformation of areas formerly occupied by brick industries into residential sections is one of the most direct reasons for the section north of Queen and south of Gerrard being so extensively built upon at the present time. With the improvement of the harbor near at hand the section south of Queen street will undoubtedly develop into a manufacturing area and with the factories to the south and the homes to the north Queen East will be as important a thoroughfare as any in the city. Queen East is also an important artery of travel for farmers coming into the city from the rich agricultural area to the east of the city and the trade from this source is aiding materially in the business up-build taking place.

GOLDEN DREAMS WERE SHATTERED

Boy Applies For Position and Receives Startling Reply With List of Duties.

LONDON, Sept. 20.—A south London boy with golden dreams of the future, recently applied for an advertisement for the post of hall-boy at a school for the "sons of gentlemen" at a resort near Brighton. He saw himself standing at his post with head erect and shoulders squared, dressed in a tight-fitting livery trimmed with many brass buttons, and his hands were somewhat damp when he received the following list of duties which he would have to perform. "You will be required (says the reply):

- To be an early riser, strong, active and willing.
- To polish the shoes of thirty-five boys, head-master, and his wife, three masters, a mistress and housekeeper.
- To clean all windows regularly.
- To clean all basement passages and outside steps.
- To answer the front door bell.
- To keep the classrooms swept and polished.
- To clean all the knives, forks, and spoons.
- To help with the lift at meals, and to make yourself generally useful.
- He may not smoke on the premises.
- His religion must be Church of England.
- He will have one evening each week free from 5 till 10 and every second Sunday from 2.30 till 10 p.m. He will sleep on the premises and receive for his services, in addition to his food, \$1.00 a week.

ONLY CLEAN SHOWS IN BURLESQUE NOW

Progressive Circuit President Gives Wheel Managers Strong Instructions.

They're taking the burly out of burlesque, also the blush. The managers of the progressive circuit of which our W. W. Stair is president, believe they can draw the crowds with decent comedy, good songs and clever stagerwork, and the various theatres on the wheel are getting notices from W. W. Stair like this: "W. W. Stair, Star Theatre, Toronto: Will you please send us a detailed criticism of the show playing your circuit every Monday? I would like to impress upon you the policy of the Progressive Circuit, which is to give clean burlesque. As you know, we have a number of producers on our circuit of the old school, and who may be short-sighted enough to think that such will be speedily disciplined, but they could do a great deal of damage to the theatre manager responsible for clean shows, by putting a clause in this effect in your contract: "Don't be afraid to talk straight to any show manager who attempts to wreck our circuit in this way, and report same to this office." Please tick this up in your office, and give show managers to understand we mean it."



Dining-Room Furniture

Four exceptional items of money-saving from the finest display of dining-room furniture in Toronto.

Pedestal Extension Tables, \$16.50, were \$22
Made of quarter-cut oak, fumed finish, 44-inch round top, 6 ft. extension, heavy, round, barrel pedestal, easy running slides, well constructed. Regular \$22.00. Special on Monday at **16.50**

Diners, \$19.25 per set, reduced from \$23.50
Made of solid oak, fumed finish, high back, full box seat, upholstered in genuine Spanish leather, good pattern, well constructed. Regularly \$23.50. Monday, per set of five side chairs and one arm chair **19.25**

China Cabinets, \$29.50, worth up to \$39
Two designs to choose from, made of selected quarter-cut oak, fumed finish, bent glass sides and door, five shelves, well designed, first-class construction. Regular prices up to \$39.00. Monday for **29.50**

Buffets, \$27.50, former price \$36.50
Made of quarter-cut oak, fumed finish, full size British bevel mirror, one long display shelf, two cutlery drawers, one lined, large double door cupboard, long line drawer, trimmed with wood knobs, well finished throughout. Regular price \$36.50. Monday **27.50** special at **27.50**

Living Room Chairs and Rockers

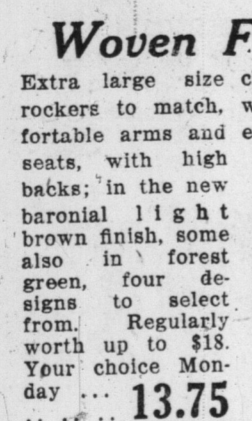
At \$12.95

Stuffed-over styles, including illustrations, deep, comfortable spring seat and back, with arms, all covered in two-tone striped denim, in green or brown; rockers to match if desired. Reg. prices up to \$16.50. Special on Monday **12.95**



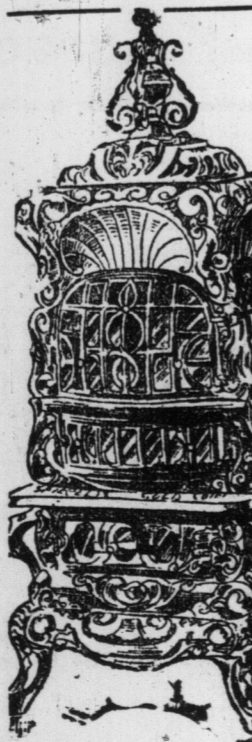
At \$17.95

Stuffed-over design, chairs and rockers to match, covered in English verdure tapestry, deep, comfortable spring seat and back, upholstered arms. Regular prices up to \$25.00. To clear on Monday, each **17.95**



Woven Fibre

Extra large size chairs and rockers to match, comfortable arms and extra deep seats, with high backs, in the new baronial light brown finish, some also in forest green, four designs to select from. Regularly worth up to \$18. Your choice Monday **13.75**



"Treasure" Stoves

The time has come when it is both uncomfortable and unsafe to be without a heating stove. And there is no good reason to put off having one. We make it extremely easy by accepting a small amount down and little payments afterwards. And you have the best stoves in the world to select from—the famous "Treasure" line.

The "Crown Treasure"

Here illustrated, one of the many excellent designs of "Treasures" is made in several sizes. It has duplex grate, automatic top, full mica front and sides, elaborate nickel-plating, fancy urn and register screw drafts. Prices range from \$32.75 up to \$50.00. May be paid for a little at a time, as convenient.

Electric Appliances

National Electric Iron, full 6 pound weight, full nickel-plated, fitted with 6 feet of cord, guaranteed. Regularly \$4.50. **3.29** Special on Monday at
National Toasters, will toast both sides at one time, nickel-plated, with draw-out handle, fitted with 6 feet of cord. **4.45** Special Monday
Irons **\$3.29** Toaster **\$4.45**

Complete Stocks of Columbia Records

THE ADAMS FURNITURE COMPANY LIMITED, CITY HALL SQUARE

Adams

Monday's Sales

The Biggest and Best Bargain Bulletin Presented for the benefit of Home Providers in Many a day

Carpets, Linoleums and RUGS



Any of them easy to buy if you take advantage of our "Charge Account" plan, and pay us a little each week.

Velvet Carpet \$1.33 Yard
800 yards, heavy pile, in floral and Oriental patterns, some with borders to match, in fawn, greens, reds and blues, suitable for drawing-rooms, dining-rooms and living-rooms. Regular prices up to \$1.75 per yard. Special on Monday at **1.33**

Tapestry Art Squares
50 only, large size, fine quality, in floral and medallion patterns, in greens, tans and turkey colorings, in the following sizes:
10.6 x 12.0, regular price \$20.00, Monday at **15.20**
12.0 x 12.0, regular price \$22.00, Monday at **16.20**
12.0 x 13.6, regular price \$25.00, Monday at **17.20**
12.0 x 15.0, regular price \$28.00, Monday at **19.20**

Scotch Inlaid Linoleum
1,200 yards, in floral and tile patterns, all 2 yards wide; a large range in two grades at special prices; lot worth regularly \$1.15 per square yard, at per square yard, 97c; lot worth regularly \$1.40 per square yard, on Monday at, per square yard, \$1.17.

Wool Rugs for Bedrooms
100 only, heavy Scotch weave, in a nice selection of hints patterns, suitable for bedrooms, in tans, blues, greens, greys and rose, in the following sizes:
9.0 x 9.0, regularly worth \$18.00, Special Monday for **13.50**
9.0 x 10.6, regularly worth \$21.00, Special Monday for **15.50**
9.0 x 12.0, regularly worth \$24.00, Special Monday for **17.50**

Velvet Hearth Rugs
50 only, in dotted designs and colorings, size 27 x 54 inches. Regularly worth \$2.50. Special on Monday **1.98**

Every one should know that the special features in this or any of our advertisements may be purchased on our popular "Charge Account" plan without any additional cost to the reduced prices. Thus any one can avail themselves of these excellent chances for economy without financial inconvenience.

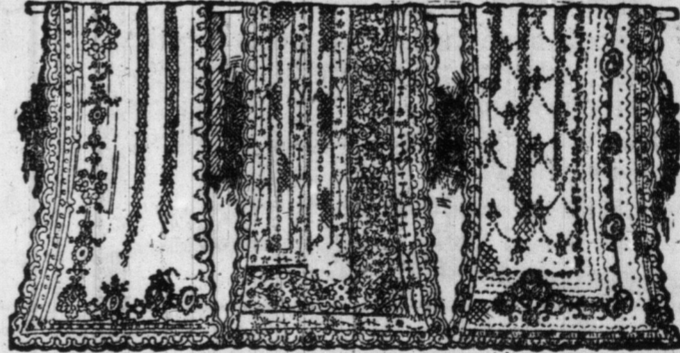
No other Store in Toronto Sells "Hoosier" Kitchen Cabinets. "Caloric" Fireless Cookers "White" Sewing Machines.

All the ear leaders in their respective lines.

The Home of the GRAFONOLA

We can sell you any one of a dozen or more style of this famous home entertainer, at prices ranging from \$20 up.

Complete Stocks of Columbia Records

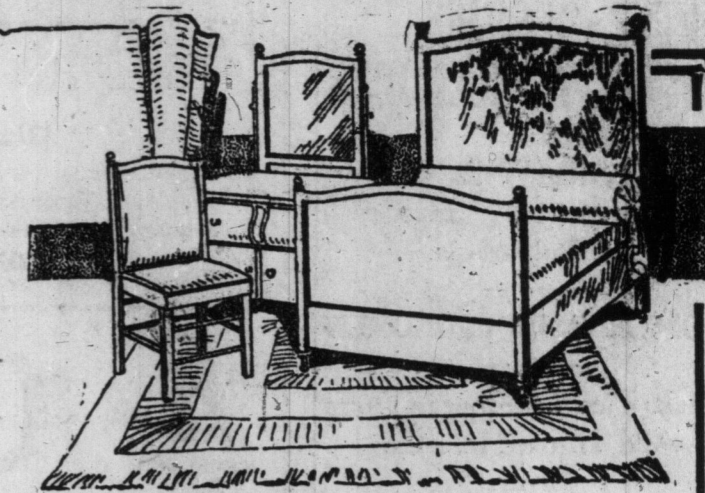


Little to Pay Monday for Nice Lace Curtains

Imported Novelty Curtains, \$4.95, worth up to \$7.50 in shades of ecru or ivory, suitable for parlors, dining-rooms or bedrooms, 40 to 45 inches wide by 2 1/2 yards long. Regular prices up to \$7.00 per pair. Clearing on Monday at, per pair **4.95**

Nottingham Sash Net Curtaining, 69c Yard
In all the new effects, including all-over lace, fllet, shadow, floral or block designs, in shades of ivory, white, ecru or Arab, suitable for any room, 45 to 50 inches wide. Regularly worth up to 90c per yard. To clear on Monday at, per yard **.69**

Nottingham Curtains, \$2.95, from \$4
Floral, scroll and conventional designs, strong mesh, colbert edges, suitable for parlors, dining-rooms or bedrooms, in white or ivory, 50 in.-wide by 3 yards long. Regular prices up to \$4.00 per pair, Special on Monday at, per pair **2.95**



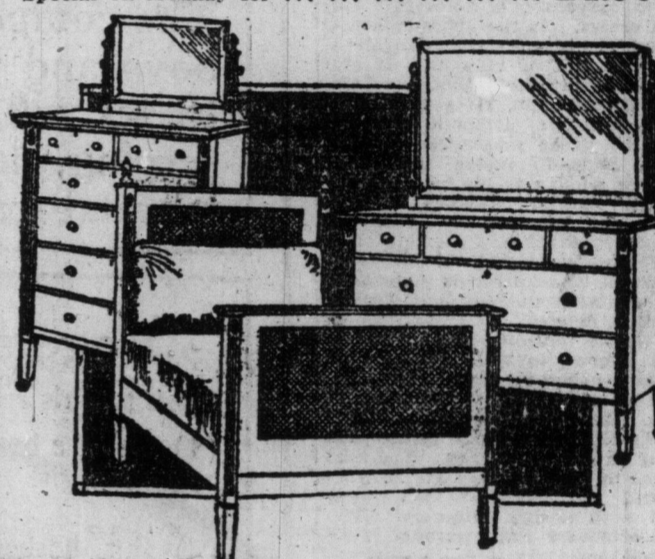
Furniture for the Bedroom

Opportunities that no thrifty housekeeper should overlook.

Dressers at \$21.65—Reduced from \$30
In choice polished quarter-cut oak or mahogany, full 42-inch cases, containing two long and two small shaped drawers, best quality lock to each, plain wood trimmings, 24 x 30 square or oval British bevel mirrors, best interior construction; we have 24 only to clear. **21.65** Regularly worth \$30.00. Your choice on Monday **21.65**

Chiffoniers at \$19.65—Worth Up to \$28
In choice polished quarter-cut oak or mahogany, a range of four designs, oval or shaped British bevel mirrors, five long drawers, top one shaped, best quality lock to each, plain wood trimmings, splendid interior construction, choice stock used throughout; five designs in the lot. Regular prices up to \$28.00. All clearing on **19.65** Monday for **19.65**

Dressers and Stands, \$24.90—From \$36
In rich golden surface oak, quarter-cut finish, 44-in. cases, with full sweep fronts, containing one long and two small drawers, plain brass trimmings, 24 x 48 best British bevel shaped mirror, supported by neatly turned and carved standards, extra large combination three-drawer washstand to match. Two pieces. Regularly \$36.00. Special on Monday for **24.90**



More High Class Suites added to the Clearance told of in Yesterday's Advertisement

4-piece suite, Circassian walnut, dresser and chiffonier, with full sweep front, shaped mirrors, dressing table and bed. Regular price \$275.00. Monday **198.50**

4-piece suite, in gumwood, satin finish, dresser, chiffonier, cane panel bed and somnol, massive design. Regularly \$195.00. Monday only **138.50**

7-piece suite, Circassian walnut, Sheraton inlaid, large dresser and chiffonier, full swell front. Reg. price \$600.00. Special on Monday **450.00**

6-piece suite, American walnut, dresser, chiffonier, dressing table, somnol, chair and rocker; a neat design. Regular price \$200.00. Monday **149.50**

Blanket Bargains

Blankets at, per pair, \$2.95—Good mixed wool, white, heavily knapped, full 6-pound weight, double size, pink or blue borders. Regularly worth \$4.25 per pair.

Comforters at \$1.29—Filled with pure white cotton, covered in good quality art muslin, in assorted colors, double size. Reduced from \$1.95.

Comforters at \$2.75—Filled with pure white cotton, full double size, 72 x 72 inches, covered with satin both sides, in choice assortment of colorings. Regular price \$4.00.



This Outfit \$8.65

Comprising Iron Bed Spring and Mattress
In best quality white enamel, heavy brass rail, mounts and knobs, full drop extension foot, exceptionally high head end, complete with closely woven wire spring, with heavy cable supports, and mixed mattress, filled with pure curled seagrass, felt both sides, covered in good twilled ticking. Regularly worth \$12.50. Outfit complete on Monday at **8.65**

Out-of-Town Residents should have our large Photo-illustrated Catalogue No. 31.