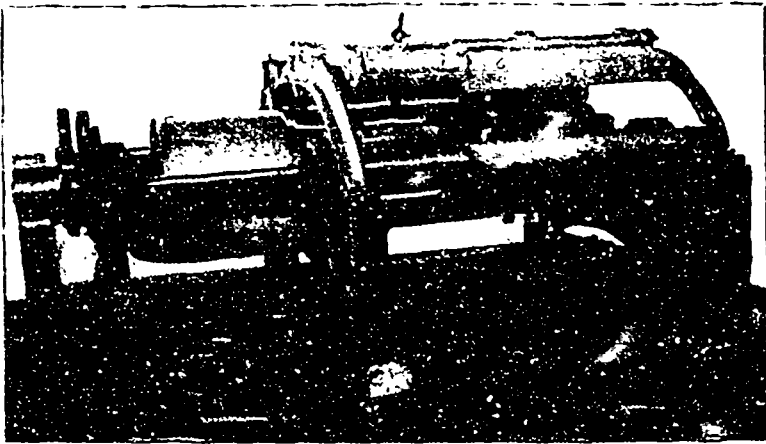


Do It Right Now!

Write us and we will tell you all about our



Combination Gang Edger

The above cut represents what we call a 60-inch machine, i. e., the entire length of the feed rollers is 60 inches. The arbor is arranged with a gang of eleven saws for manufacturing 1-inch lumber from cants 4, 6 and 8 inches through. The balance of machine is arranged with three moveable saws, one stationary or fast.

With this machine the cut of a mill can be increased at least 25 per cent. without any additional expense for labor, as a great deal of the sawing which is now done on the hand or circular can be done on this machine. It has rift flooring attachments, and is without question the best machine on the market. It has been in use in the larger mills for many years.

Read and Reflect

Rodgers Iron Manufacturing Co., Muskegon, Mich.
Gentlemen:—Replying to yours we will say that the combined flooring mill and edger is doing good work and that we have no fault to find with it, as it is a very satisfactory running machine.
Respectfully,

RHINELANDER, WIS.

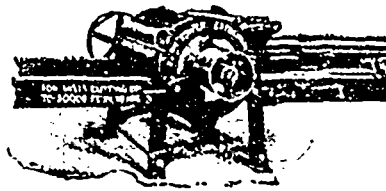
BROWN BROS. LUMBER CO.

Our Guarantee Follows Every Machine

RODGERS IRON MFG. CO.
MUSKEGON, MICH.

We are the Largest Manufacturers of Blast Grates, Edgers and Trimmers

IN THE WORLD.



The "TOWER" 2 and 3 Saw Edgers. The only edgers made for mills cutting not to exceed 20,000 ft. ten hours.

The "TOWER EXTRA" 3 Saw Edger. A larger and heavier reproduction of the "TOWER" Edger, for mills cutting up to 30,000 ft. in ten hours.

See December issue of CANADA LUMBERMAN for reasons for the great popularity of these celebrated Edgers.

Of "TOWER" and "TOWER EXTRA" Edgers there are Over 800 in Daily Use.



The "TOWER" One-Man 2-Saw Trimmer. With this trimmer one man can easily trim the output of a mill cutting up to 30,000 ft. in ten hours.



The Gordon Hollow Blast Grate.

Gives as good results with wet, green or frozen sawdust or other refuse as a draft grate gives with dry wood. No first-class mill is without them. On the market fourteen years. 2,000 sets in daily use.

Gordon Hollow Blast Grate Co.,
GREENVILLE, MICH.

SEND FOR CATALOG D.

ESTABLISHED 1889

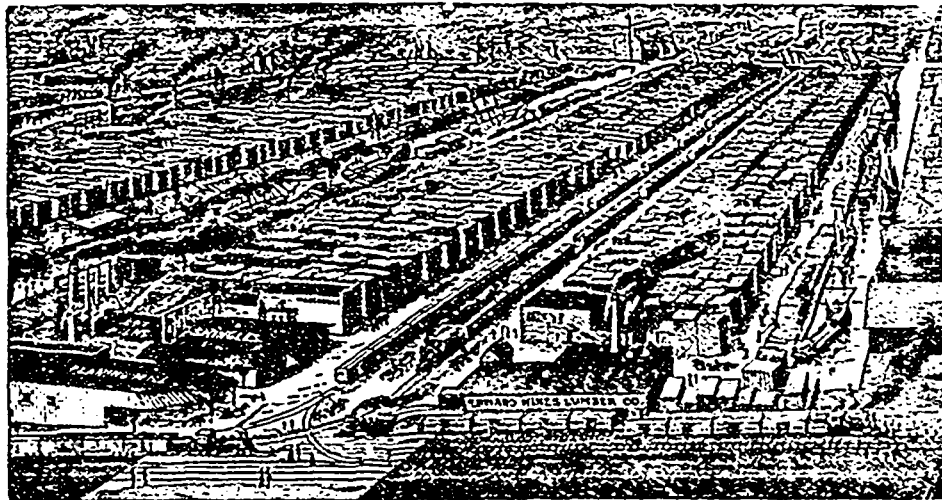
EDWARD HINES, PRESIDENT.

L. L. BARTH, VICE-PRESIDENT.

C. F. WIEHE, SECRETARY.

EDWARD HINES LUMBER COMPANY

CHICAGO, ILLINOIS



LARGEST LUMBER YARDS IN THE WORLD

Headquarters for Everything in the Lumber Line

We carry a complete stock of LONG, HEAVY TIMBER up to and including 16 x 16—60 feet long; LONG, HEAVY JOISTS, up to and including 3 x 4—36; CAN SHIP IMMEDIATELY. We also carry a complete stock of THE HIGHER GRADES OF LUMBER, especially from 1 inch up to 6 inches in thickness, UPPERS, SELECTS, SHOP STOCK, ETC. REMEMBER there is NO DUTY ON ROUGH LUMBER GOING TO CANADA and that we are making many shipments to Canada and the New England States. We solicit enquiries from that territory especially and will give same prompt and careful attention.