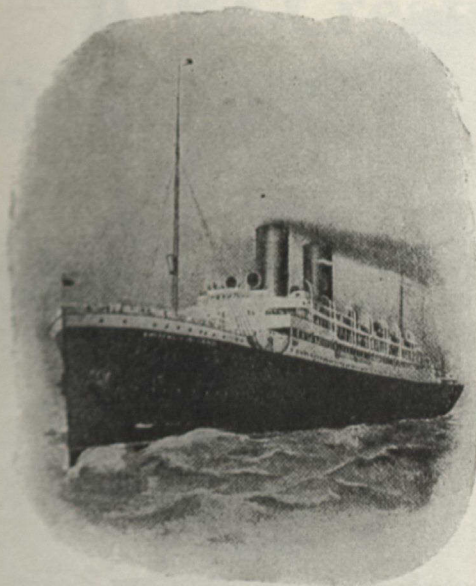


CANADIAN PACIFIC RAILWAY COMPANY'S ROYAL MAIL STEAMSHIP LINES



EMPRESS OF BRITAIN and EMPRESS OF IRELAND

THE EMPRESSES

AND 14 OTHER MODERN
ATLANTIC LINERS

AN OCEAN RECORD is a strong point in favor of a ship; it proves its superiority. Our *Empresses* have made and broken all records between Canada and the Old Land—5 days, 23 hours, dock to dock. Quick, isn't it? Prices very moderate, too.

East	SUMMER SAILINGS	West
July 24, Lake Erie	July 7
" 30, Empress of Ireland	" 16
Aug. 7, Lake Manitoba	" 21
" 13, Empress of Britain	" 30
" 21, Lake Champlain	Aug. 4

All vessels equipped with wireless, and all modern appliances for safety and comfort of passengers

For rates and other information apply to any
S. S. and Railway agent

OR TO

S. J. SHARP

West. Pass. Agt.

71 Yonge St., TORONTO

W. G. ANNABLE

Gen. Pass. Agt.

MONTREAL

White Star-Dominion Line

WEEKLY SAILINGS ST. LAWRENCE SEASON

From MONTREAL and QUEBEC to LIVERPOOL

FLEET FOR SEASON 1909

The new steamers S. S. "LAURENTIC," of 14,892 tons, triple screw, combination of turbine and reciprocal engines, also the S. S. "MEGANTIC," twin screw, 14,878 tons. Largest and most modern steamers in the St. Lawrence with accommodation for First, Second and Third Class passengers. The S. S. "CANADA" will also be operated, with accommodation for three classes of passengers.

Moderate Rate Service—One Class Cabin (called Second Class)

To meet the growing demand especially from those engaged in educational work, it has been decided to continue the One Class Cabin Service. The S. S. "DOMINION" and the S. S. "OTTAWA" have been placed on this service, and will meet the demands of those who desire the best that the steamer affords at a moderate rate.

For all information apply to Local Agents or Company's Offices.

MONTREAL, 118 Notre Dame St. West. TORONTO, 41 King St. East. WINNIPEG, 205 McDermot Ave.