

with numerous punctures. .40 in. A variety occurs in California in which the thorax is entirely black.

SCUTOPTERUS, Esch.

Two species are recorded from Canada, neither of which are known to us in nature. They are, according to Dr. Sharp, different in shape from the other Colymbetini proper, and remind us somewhat of large *Agabi*. The surface sculpture consists of fine reticulations, resembling that of *A. tristis*. They are thus separated, the measurements being those of Dr. Sharp:—

Shining black, serial punctures distinct behind. .64 in. . . . . *Hornii*, Cr.  
Less shining, piceous black, serial punctures indistinct behind.

.64 in. . . . . *angustus*, Lec.

RHANTUS, Esch.

The species of this genus are often yellowish above, with black irroration on the elytra, and often darker spots on the head and thorax. They are a little less than half an inch in length, and may be separated on the following characters:—

A. Base of prothorax profoundly bisinuate, the hind angles prolonged, acute, black; legs, antennæ, sides of thorax and elytral epipleuræ rufo-piceous. .40 in. . . . . *sinuatus*, Lec.

AA. Posterior angles of thorax not prolonged.

b. Body beneath mainly black, more or less variegate with fulvous. Thorax with two median black spots, head black, front fulvous, elytra and legs fulvous, the former thickly irrorated with black (.47 in.) . . . . . *binotatus*, Harr.  
Thorax yellow, front and hind margins black; head black, front and vertex fulvous, prosternum and four anterior legs pale (.40 in.) . . . . . *bistriatus*, Bergstr.

bb. Body beneath pale (.41 in.) . . . . . *tostus*, Lec.

COLYMBETES, Clairv.

Rather large, elongate beetles, with transversely striate elytra.

A. Legs black.

Elytra with sides and basal margin pale. Sides of thorax fulvous (.64-.70 in.) . . . . . *longulus*, Lec.

Elytra with basal margins and humeral angles pale, thorax fulvous, with transverse black median bar. (.74 in.) . *seminiger*, Lec.

AA. Legs pale (.63 in.), (Fig. 10) . *sculptilis*, Harr.

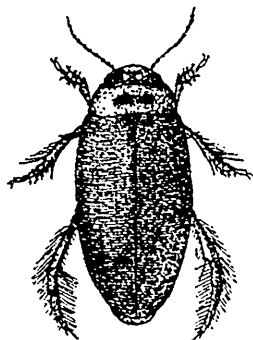


Fig. 10.