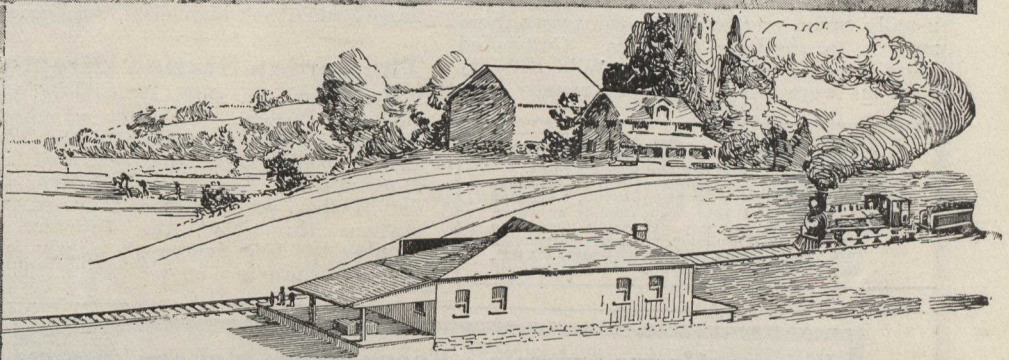
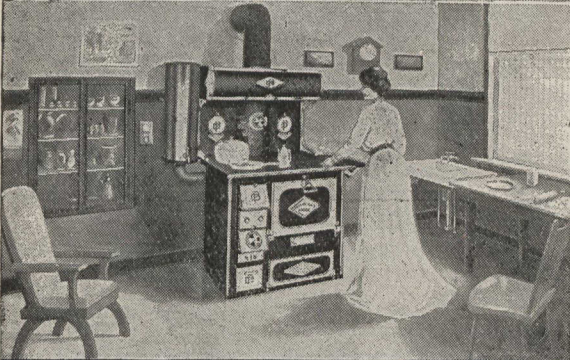
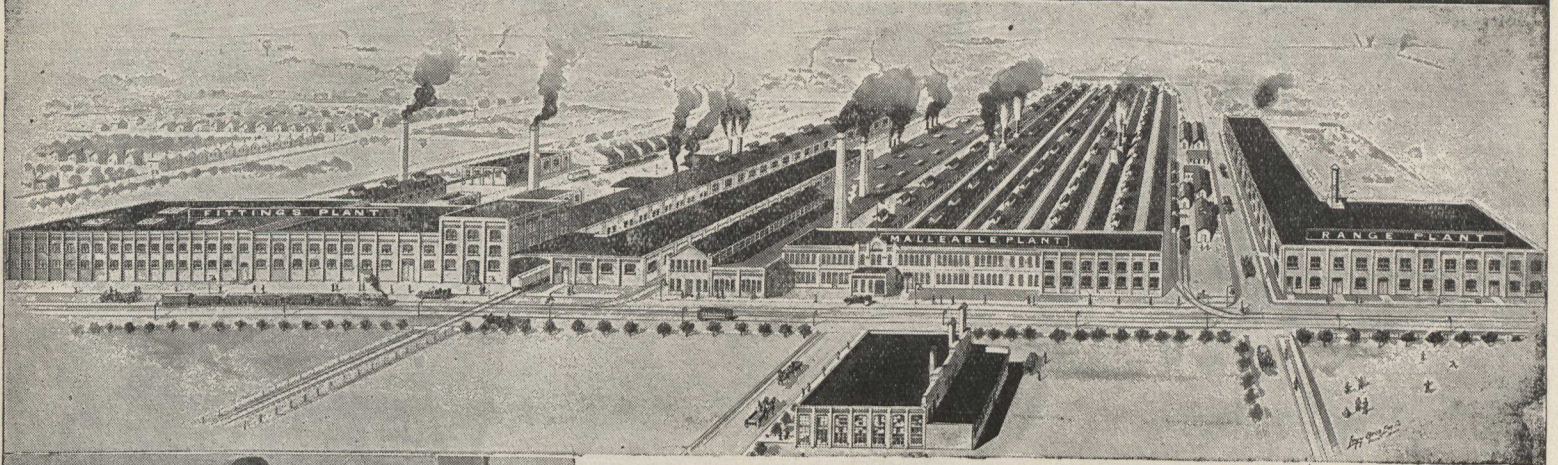


DIRECT *from* FACTORY to KITCHEN



SAYES *all* MIDDLEMENS PROFITS

The "Dominion Pride" Range

MADE IN CANADA and is placed on the market in response to a demand for a Range combining the sterling qualities of Malleable Iron and Polished Steel, Unbreakable, Unwarpable, Indestructible, Economical, Design Attractive, Perfect Cookers and Bakers, will last a lifetime with Proper Care. The ordinary cast iron range is at best a disappointing investment to the purchaser, so soon does it exhibit the effects of wear and tear, unavoidable in a range constructed of such frail and brittle material. The Combined Malleable Iron and Blue Polished Steel Range is the nearest approach to Absolute Perfection ever designed for Comfort, Economy and Satisfactory Domestic Service and wherever installed it will prove itself a continual object of Satisfaction. The price at which it is supplied is so modest that it is brought easily within the reach of every prudent family.

GUARANTEE

"DOMINION PRIDE" RANGES are sold on the following Guarantee: If any casting proves defective in twelve months from date of purchase, we will furnish same free of charge. The above guarantee is very broad, no if's or and's, and any casting that would have a flaw in it that we failed to see in the course of construction, such flaw would show long before the twelve months have transpired when fire is put in range.

INCOMPARABLE OFFER

Our placing direct to the consumer our high grade "DOMINION PRIDE" Malleable and Polished Steel Range, as fully described in our descriptive circular and guaranteed, for less than you can buy a cast iron range. We are enabled to make this extraordinary offer by our Direct from Factory to Kitchen Plan, which saves the jobbers, retailers, travelling salesmen and their expenses, giving the consumer the benefit of these savings, which in reality enables the consumer to buy as cheap as the wholesale jobber.

PRICE

Why not buy direct from the Manufacturer and save the middle men's and retailers' profits? "DOMINION PRIDE" RANGE if sold through the retailer or travelling salesmen, would have to be sold for \$69.00 to \$78.00, according to the territory sold in. Our price direct to the consumer, is as follows:—"DOMINION PRIDE" RANGE, 8-18 or 9-18 top, with high closet shelf and elevated tank or flush reservoir, with piece of zinc to go underneath range, eight joints of blue polished steel pipe and two elbows, delivered to any railway express station in Ontario, Quebec, New Brunswick, Nova Scotia and Prince Edward Island for \$41.00. (We pay the Freight), and delivered to any railway express station in Manitoba, Alberta, Saskatchewan and British Columbia for \$49. (We pay the Freight)), \$5.00 to accompany order, the balance to be paid when range is delivered to you. If not convenient to pay cash, will accept your note.

CASH PRICE \$41.00

Delivered to any Railway Station in Ontario, Quebec, New Brunswick, Nova Scotia and Prince Edward Island. We pay the Freight.

CASH PRICE \$49.00

Delivered to any Railway Station in Manitoba, Alberta, Saskatchewan and British Columbia. We pay the Freight.

MANUFACTURED AND SOLD ONLY BY THE

Canada Malleable & Steel Range Mfg. Co.

OSHAWA, ONTARIO

LIMITED

(In Writing Please Mention this Paper.)

818 or 918—Elevated Tank or Flush Reservoir for Coal and Wood. Made of the Best Blue Polished Steel and Malleable Iron.

Write for our Descriptive Circular

OVER 6000 OF OUR RANGES IN USE IN TORONTO ALONE

