

pletely!

3rd Nov., 1911.

not fear, Messrs.
k of **Bosley's**
ip for doors or
w and dust. If
etc., you will be

THE NORTH.

Hardware
Dept.,
Pitts' Building.

G. KNOWLING.

ED!

pened make a
test and most
and fancy

TS

dren,

comparison of
style, finish or
in the city, the
pur.

VLING.

FOUNDLAND
COMPANY.

BAY SERVICE.

CLYDE"

Schedule. Passengers
s to-day, Thursday.
for ports of call on
e Dame Bay.

land Company
Neatly Executed.

Ladies Blouses---\$1.35.



—Only 3 doz. of them.
—Fine Cashmere.
—Colors of Crimson, Cardinal,
White, Saxe, Reseda, and
V. Rose.
—Boxpleated and Shirred
Fronts.
—Tucked Cuffs and Collars.
Regular Value—\$1 65.

Special—\$1.35 each.

Good Crockery Bargains.

Wine Glasses, assorted patterns. 13c. each
Reg. 17c. Friday
Fancy China Flower Pots. Reg. 95c. Friday. 85c. each
Fancy China Hot Water Kettles. 78c. each
Reg. 90c. Friday
Hot Water Jugs, Litho and Gold. 40c. each
Reg. 45c. Friday
Glass Salt and Pepper Shakers (glass tops). 7c. each
Reg. 10c. Friday
Hygienic Pudding Bowls, 1 pint. 13c. each
Reg. 15c. Friday
Plain White Earthen Spoons. Reg. 18c. Friday. 15c. ea.
Fancy Samian Teapots. Reg. 27c. Friday. 24c. each

Four Grocery Specials.

CROSSE and BLACK- WELL'S PICKLES. Reg. 35c. Friday, 25c. bot.	SUTTON'S HARVEY SAUCE. Reg. 30c. Friday, 20c. bot.	KOLA TONIC WINE. Reg. 75c. Friday, 69c. bot.	PURE GOLD JELLIES. Reg. 12c. Friday, 10c. pckt.
--	---	---	--

Good Value in Ribbons.

370 yards of Double Faced Silk Ribbon, 6 inches
wide; colors of Browns, Greens, Fawns, Amethyst,
V. Rose and Blues. Reg. 45c. yard. Fri- 15c
day
700 yards of Taffeta Silk Ribbon, 6 inches wide; colors of
Navy, Pink, Pale Blue, V. Rose, Prunelle, Helle, Royal,
Crimson, Cardinal, Cream, White and Black.
Reg. 25c. yard. Friday 19c

Underwear Greatly Reduced.

LADIES' UNDERWEAR—5 doz. suits of La-flo's Forest
Mills fine quality Fleece Lined Underwear, Pants and
Yests, necks finished with Silk and tayed;
assorted sizes. Reg. 70c. garment. Friday 62c
LADIES' NIGHTGOWNS—3 doz. of Ladies' Flannelette
Nightgowns, colors of Pink and Cream; collars, cuffs
ery. Reg. \$2.20 each. Friday \$1.70
LADIES' KNICKERS OR BLOOMERS—3 doz. pairs of
Ladies' Jersey Knit Fleece Lined Knickers or Bloom-
ers; colors of Brown, Saxe and Amethyst. Reg. \$1.10 pair. Friday 85c

Mail Orders Filled.

Rope Door Mats Size 18 x 29 inches. Crimson border. Reg. 24c. Friday, 20c. yard	Imitation Saxony Flannel 21 inches wide; special value. Reg. 18c. Friday, 15c. yard
White Twill Sheeting 70 & 80 inches wide. Reg. 50c. Friday, 42c. yard	Circular Pillow Cotton Fine Twill; 40 inches wide. Reg. 25c. Friday, 20c. yard

PRESENTING MANY OPPORTUNITIES FRIDAY!

MILLINERY AND MANTLES.

Friday we shall offer many special values in Ladies' Millinery and Mantles. The Millinery are all this season's newest importations, and include all the newest colorings. Such values as \$3.50 and \$3.75 for \$2.75; \$5.00 and \$6.00 for \$4.25; \$6.50 and \$7.50 for \$5.50; \$10.00 and \$12.00 for \$8.50. The Mantles are mostly light weight, and include a big range of samples. The colors are Pink, Pale Blue, Navy, Crimson, Brown, Cream, etc. The prices range from \$2.50 to \$4.50. Friday all at half price. We expect some lively selling.

RIPPING GREAT HARDWARE VALUES.

Wire Clothes Lines. Reg. 20c. Friday 18c. each Nickel Waiters, 2 handles; 18 inch. Reg. 95c. Friday 85c. each Bronze Waiters, 2 handles; 16 inch. Reg. 80c. Friday 71c. each Scrub Brushes. Reg. 12c. Friday 10c. each Ironing Sleeve Boards. Reg. 18c. Friday 15c. each Aluminum Pie Pans. Reg. 40c. Friday 35c. each Whisks. Reg. 22c. Friday 18c. each	Clipper Can Openers. Reg. 15c. Friday 10c. each Brass Fire Irons. Reg. \$4.25. Friday \$4.00 each Enamel Spoons. Reg. 40c. Friday 33c. each Egg Poachers. Reg. 17c. Friday 14c. each Frottoline Window Cleaner. Reg. 35c. Friday 30c. each Diamond Furniture Polish. Reg. 12c. Friday 10c. bot. Cloth Brushes. Reg. 12c. Friday 10c. each Tea Infusers. Reg. 25c. Friday 20c. each
---	---

HEARTH RUG SPECIALS.

Brussels Hearth Rugs Size 24 x 54 inches; neat floral patterns. Reg. \$2.00. Friday, \$1.70 each.	Brussels Hearth Rugs Size 27 x 64 inches; rich and neat effects. Reg. \$2.50. Friday, \$2.15 each.
--	---

Imitation Turkish Rugs.

Size 27 by 56 inches.
Neat Border and Fancy Centre.
Reversible.
Regular \$2.00 for \$1.65 each.

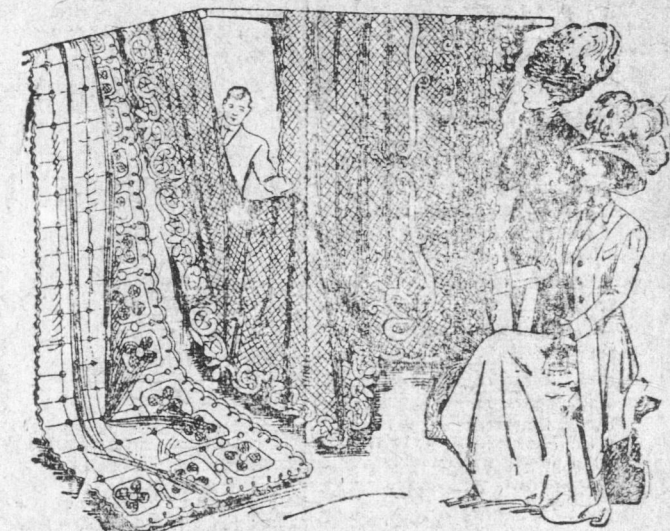
Great as the crowds, always here on Friday's, we expect this Friday to surpass them all, so advise all who possibly can to do their shopping as early in the day as possible.

BOLSTER CASES. 2 doz. only of Filled and Hem- stitched Linen Bolster Cases, size 22 x 63 inches; good stand- ard quality. Reg. 80c. Friday 62c	CUSHION COVERS. 6 doz. of Tapestry Cushion Cov- ers, size 19 x 19 inches; Turk- ish, Dutch, Red Riding Hood and Boating Scenes. Reg. 22c. each. Friday 18c	TOOTH PASTE. 5 doz. China Crocks of Vinolia Tooth Paste, antiseptic, as- tringent, and delightfully per- fumed. Reg. 25c. ed. Friday 19c	PEARL BUTTONS. 500 doz. of Pearl Buttons, suit- able either for Dress or Shirt use; choice of four different sizes. Reg. 4c. doz. Friday, 3 doz. for 7c	EXERCISE BOOKS. 30 doz. of "The Standard" Exer- cise Books, ruled font; full as- sortment of Tables on back cover. Reg. 3c. each. Friday, 1 for 5c
PILLOW CASES. 3 doz. of Filled and Embroider- ed White Cotton Pillow Cases, size 20 x 28 inches; each cor- ner neatly embroidered. Reg. 45c. ea. Friday 38c	WOMEN'S HOSE. 30 doz. of Women's Black Cash- mere and Worsted Hose, fine English manufacture. Values to 40c. pair. Friday 34c	VIOLET POWDER. 20 doz. packets of Violet Powder, suitable either for Toilet or Nursery use. Reg. 3c. pckt. Friday, 3 pcks. for 5c	TAPE. 117 doz. of best Blocked India Tape, the only patented non- twist made in England; as- sorted sizes. Reg. 3c. piece. Friday, 3 pcs. for 4c	ENVELOPES. 750 packets of Cream Laid En- velopes, 25 in packet; oblong and square. Reg. 4c. pckt. Friday, 2 pcks. for 5c
SIDEBORD CLOTHS. 18 only White Linen Sideboard Cloths, fine Lace and Insertion trimmed, and hemstitched band, size 12 x 48 inches. Reg. 45c. each. Friday 35c	SCRUBBING CLOTHS. 2 doz. of Scrubbing Cloths, go- od thick quality, edges well bound. Reg. 5c. each. Friday, 2 for 8c	PHOTO FRAMES. 10 doz. of assorted Photo Frames, including Celluloid, Leatherette and Enamelled Wood; a neat assortment. Reg. 25c. each. Friday 19c	PINS. 720 sheets of Nickeloid Toilet Pins, all large size. Special. Friday, 4 sheets for 5c	DRESS GOODS. A sale that is calculated to strengthen our standing as the leading distributors of Dress Goods in Newfoundland.
TABLE COVERS. 10 only Chenille Table Covers, 8-4 size, assorted floral effects in Greens, Gold and Crimson. Regular \$1.60 each. Friday \$1.30	WHITE SHIRTING. 2,000 yards of English White Shirting, 31 inches wide; suit- able for hand or machine use. Reg. 15c. yard. Friday 11c	TOILET SOAP. 50 cakes of Toilet Soap, nicely perfumed; made by Blomfield & Co., Paris and London. Special Friday, 2 cks for 9c	COLLAR SUPPORTS. 200 sets of "The Little Beauty" Collar Supports, Celluloid, with Black Gilt, Turquoise and Imi- tation Pearl Settings; one set in box. Reg. 20c. set. Friday 15c	400 yards of Amazon and Covert Cloths, with fine Satin finish; colors of Navy, Black, Vieux Rose, Saxe, Prunelle, Crimson and Navy; 52 inches wide. Reg. \$1.50 yard. Friday \$1.25

Your Opportunity to Buy Lace Curtains.

We have given many special bargains in fine Lace Curtains, but Friday's List promises to beat all past records. If you'll need Curtains during the coming season, FRIDAY ought to prove a notable day of money-saving to you at The Royal Stores Limited.

LOT 1—40 pairs only of White Lace Curtains, 2 1/2 yards long; special job line. Values to 60c. 42c pair. Friday
LOT 2—50 pairs of Nottingham Lace Curtains, size 234 yards long, White only; new patterns. Reg. 80c to \$1.00 pair. Friday
LOT 3—20 pairs of Nottingham Lace Curtains, choice of both Ecru and White; 3 yards long. Reg. to \$1.70 pair. Friday \$1.20



LOT 4—500 yards of fine Curtain Lace, assorted patterns, new and dainty; 60 inches wide. Reg. 20c. 17c yard. Friday

TIP TOP BARCAINS FROM THE STAPLE SECTION

We have broken many records for assortments and low prices in our staple section, and clever women will recognize in this Friday's list, that the values are the best possible for the money.

Linoleum Door Mats Reg. 35c. for 30c.	Cocoonut Door Mats Reg. \$1.00. for 85c.	Striped Bed Tick Reg. 30c. for 27c.
--	---	--

THE ROYAL STORES LIMITED

Ladies Gloves Heavy Cashmere, Suede finish. Reg. 25c. Friday, 20c. pair	Ladies Kid Gloves 2 done fasteners. Reg. \$1.00. Friday, 90c. pair	Ladies Boots Fine Vici Kid. Buttoned & Laced. Reg. \$2.40. Friday, \$2.15 pair
---	---	--

No Breakfast or Tea-table is complete without it.

"GOLDEN SHRED" Marmalade A Delightful Appetizer.

PREPARED BY JAMES ROBERTSON & SONS The Finest Marmalade in the World

NEW SEALING SHIP. Work on Bains Johnstone's new sealing steam-er is progressing well, and she will be out in ample time to be put in readiness for the coming voyage.
TWO ARRESTS.—The police made two arrests for drunkenness last night. The prisoners were held at the lock up and came before court this morning.
IN CRITICAL CONDITION.—Mr. Cobb who went to Hospital yesterday to have an operation performed for appendicitis, is still in a critical condition.
Attention is called to the great Piano and Organ Clearance Sale at CHESLEY WOODS—All reduced to cost and charges. Sale continues to end of present year—nov. 11

Defended Salvationists.

While Rev. Sidney Swann, the vicar of St. George's, Westmorland, who vowed from Dover to San-gate, near Cape Girardeau, Calais, in a 20 foot racing skiff in the extra-ordinary short time of 8 hours and 50 minutes, was an undergraduate at Cambridge, he was noted for his un-usually liberal minded views. For example, the Salvation Army in the "Varsity town met with fierce oppo-sition. A rowdy antagonistic mob used to find pleasure in smashing up the bandmen's instruments, and personal violence was not by any means un-known. This was too much for a trio of the undergraduates—S. Swann, Rowing Blue, who has now conquered

the Channel; C. T. Studd, the famous cricketer, now so useful a worker at the London Polytechnic; and S. P. Smith, stroke of the Light Blue crew. These at once decided to show their sympathies with the Army by ad-dressing the crowds who were drawn night to the local Salvation Army bar-racks. It is a remarkable fact that from that time the opposition com-menced to subside, and some of the most troublesome of the "roughs", led to hear the young "Varsity" speak-ers, afterwards became "soldiers" of the Army.

About those Silver Framed Cake Stands. You will find a handsome new stock of them at TRAPNELL'S now, just opened.—nov. 10, 11.

Herring Fishery News.

The herring fishery at Bonne Bay is keeping up well. The herring are of large size, and the schooners that were there last week finished loading in record time. A fleet of vessels which found herring scarce in Bay of Islands is now on the way to Bonne Bay. There is quite a slack off at Middle Arm and the Humber Arm the past ten days. At Woods Island there are some vessels seeking herring, and they are finding the work of landing very slow.

I. O. G. T.—George Boyd Lodge held a most successful meeting last night when two candidates were admitted. To-morrow (Friday) night Onward Lodge anticipates a full meeting. Rev. Dr. Rogers and others will address the members and friends. All are wel-come.