

Dominion Government Elevator

PORT ARTHUR, ONT.

Storage Capacity

3,250,000 Bushels

Has direct connection with Canadian Northern and Canadian Pacific Railways. Will be ready to receive all grain consigned to and arriving at Fort William or Port Arthur by the

For full information write The Secretary

10th October 1913

Board of Grain Commissioners
FORT WILLIAM, ONT.

UNION BANK OF CANADA

ESTABLISHED 1865

HEAD OFFICE - WINNIPEG

Paid Up Capital \$5,000,000
Reserve Fund and Undivided Profits 3,300,000
Total Assets, over 70,000,000

HONORARY PRESIDENT—WM. PRICE, Esq.

PRESIDENT—JOHN GALT, Esq.

VICE-PRESIDENTS

R. T. RILEY, Esq. G. H. THOMSON, Esq.

DIRECTORS

W. R. ALLAN, Esq. E. E. A. DU VERNET, Esq., K.C.
S. BARKER, Esq., M.P. S. HAAS, Esq.
M. BULL, Esq. F. W. HEUBACH, Esq.
Lieut.-Col. JOHN CARSON F. E. KENASTON, Esq.
E. L. DREWRY, Esq. W. SHAW, Esq.

G. H. BALFOUR, General Manager

H. B. SHAW, Assistant General Manager

F. W. S. CRISPO, Superintendent of Branches

London, Eng., Branch:

51 THREADNEEDLE STREET, E.C.



Head Office, Winnipeg

Branches and Agencies West of the Great Lakes

Manitoba—Baldur, Birtle, Boissevain, Brandon, Carberry, Carman, Carroll, Clearwater, Crystal City, Cypress River, Dauphin, Deloraine, Glenboro, Hamiota, Hartney, Holland, Killarney, Manitou, McCreary, Melita, Minnedosa, Minto, Morden, Neepawa, Nesbitt, Newdale, Ninga, Rapid City, Roblin, Roland, Russell, Shoal Lake, Somerset, Souris, Strathclair, The Pas, Virden, Waskada, Wawanesa, Wellwood, Winnipeg.

Saskatchewan—Adanac, Alsask, Arcola, Asquith, Assiniboia, Bounty, Buchanan, Cabri, Canora, Carlyle, Craik, Cupar, Cut Knife, Esterhazy, Estevan, Eyebrow, Fillmore, Gravelbourg, Guernsey, Gull Lake, Herbert, Hughton, Humboldt, Indian Head, Jansen, Kelfield, Kerrobert, Kindersley, Landis, Lang, Lanigan, Lemberg, Loversna, Lumsden, Luseland, Macklin, Maple Creek, Maryfield, McRorie, Melfort, Milestone, Moose Jaw, Moosomin, Morse, Netherhill, Neudorf, Ogema, Outlook, Oxbow, Pense, Perdue, Piapot, Plenty, Prince Albert, Qu'Appelle, Regina, Rocanville, Rosetown, Saskatoon, Scott, Sceptre, Simpson, Sinaluta, Southey, Strassburg, Swift Current, Tessier, The Forks, Theodore, Togo, Tompkins, Vanguard, Viceroy, Wapella, Wawota, Watrous, Webb, Weyburn, Wilkie, Windthorst, Wolseley, Yorkton, Zealandia.

Alberta—Airdrie, Alix, Barons, Bashaw, Bassano, Bellevue, Blackie, Blairmore, Bowden, Bow Island, Brooks, Calgary, Carbon, Cardston, Carlstadt, Carstairs, Cereal, Claresholm, Cochrane, Consort, Cowley, Didsbury, Edmonton, Fort Saskatchewan, Grande Prairie, Grassy Lake, Hanna, High River, Hillcrest, Innisfail, Irvine, Lacombe, Langdon, Lethbridge, Macleod, Medicine Hat, Okotoks, Passburg, Pincher Creek, Seven Persons, Standard, Strathmore, Swallow, Three Hills, Wainwright, Winnifred.

British Columbia—Enderby, Hazelton, Lillooet, Nanaimo, New Hazelton, Newport, New Westminster, Prince Rupert, Telkwa, Vancouver, Vernon, Victoria.

This Bank, having over 300 Branches in Canada, extending from Halifax to Prince Rupert, offers excellent facilities for the transaction of every description of banking business. It has correspondents in all cities of importance throughout Canada, the United States, the Continent of Europe, and the British Colonies. Collections made in all parts of the Dominion, and returns promptly remitted at lowest rates of exchange.

Two Central Offices in Winnipeg—Main St. and William Ave., D. M. Neeve, Manager.
Portage Avenue, corner Garry Street (adjoining Post Office), F. J. Boulton, Manager.

Other Branches in Winnipeg as follows:—Corydon Ave., Logan Ave., North End, Sargent Ave., Portage Ave. and Arlington St., Sargent Ave. and Arlington St., 490 Portage Ave.



Pratts Poultry Regulator

is the mainstay of every successful poultry-raiser. This good old reliable tonic has helped thousands of breeders and millions of fowls in the last 42 years. It will help YOU too. "Your Money Back if it Falls."

Why not order a package TO-DAY?
At your dealer's, 25-lb. pail, \$2.50; 100-lb. bag, \$9.00; also in packages at 25c., 50c. and \$1.00.

PRATT FOOD CO.
of CANADA, Limited
TORONTO. P-3

Co-operation

THIS is the age of co-operative buying. Send us your address and let us tell you how to buy, by this plan, The Flour that is always good.

Daily Capacity 300 Barrels

ECHO MILLING COMPANY
GLADSTONE, MAN.



JOEL'S PORTABLE MILL

Is a wonderful combination of a Flour Mill, a Crusher, a Grinder, a Cleaning and a Sifting Machine, and requires but two to four Horse Power

It forms a complete MILLING PLANT, built on the principles applied in large modern mills—THE ROLLER SYSTEM.

FOR MAN—It produces all grades of flour, from the coarsest to the finest household flour.

FOR ANIMALS—It produces the best form of foods, viz.—crushed or ground grain, with all its nutritive and fattening qualities.

It is the only Flour Mill, Grinder and Crusher combined, built for CAPACITY AND QUALITY OF PRODUCT, portable or fixed, AT POPULAR PRICES.

QUALITY OF PRODUCT results from its marvelous grain cleaning devices and SELF-ADJUSTABLE SIEVE BRUSHES.

CAPACITY and ECONOMY of operation result from the adaptation of the ROLLER SYSTEM with partly fluted and partly smooth rollers.

In communities where conditions do not warrant the individual use of the JOEL'S MILL, its portability meets the case. Where small or large power is used for industrial or dairy purposes, the JOEL MILL fills a gap and will add considerable revenue to the operators without additional expense, while adding to the comfort and advantages of the surrounding section.

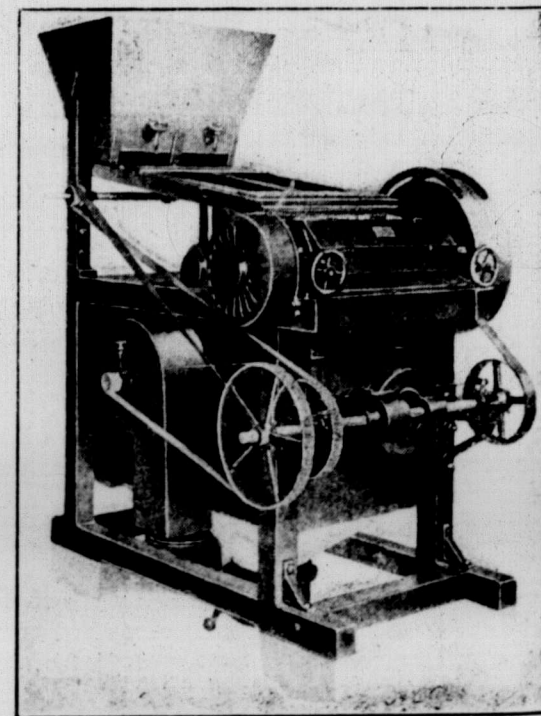
THE JOEL MILL is the last and crowning link in the marvelous chain of implements and machinery that make the farmers independent and self-sustaining.

THE JOEL MILL is completing its circuit of the world, and we can produce the highest testimonials from Switzerland, France, Germany, Austria, Italy, Russia, South Africa, Transvaal, Brazil, Chile, etc.

THE JOEL MILL IS BUILT TO LAST AND SOLD UNDER A GUARANTEE.

Reliable representatives wanted in every district. Write for our Special Dealer's Proposition.

Ask for descriptive Catalogue, sent Free on application.



BOURNIVAL & CO. MANUFACTURERS AND MANUFACTURERS' AGENTS

333-337 NOTRE DAME STREET EAST

MONTREAL, CANADA

The Gt that is by the of independ cal, capit is invest in The G Canada forward All and S prevail. Subscri Empire, \$ three year, \$5 scripions Single co) Send m bank mor responsibi a letter.

N The / TheC Comp Nover A ha arrange and pa and ot to and shareh notified are inse Guide s ers who above vantage visit ou what p in estab ers' Con propositi tying o the or straw. the Rai. the ins purchas arrange certifica sented a

Stand. from Each dele more than Sunday. meeting, any) a fi tinuous tr meeting, to which tickets, a the ticket Certificate procured before sta are suppli tificates a them on

Travel than o If delegat more than of meeting purchase t ard Certif each Rail arranged f tickets auti must be fil vised by tending th

Wives Reduced to delegate daughters v to the Ann

Childre No reduct children of

The G Grain