

## Don't Judge a Roofing by its Looks



Beware Imitations

Most ready roofings look the same. The weather alone finds the hidden weakness.

You can't tell by looks which roofing will last or which will go to pieces in a season.

But you CAN do this. You can identify from its 300 substitutes the ONLY roofing which has lasted.

## RUBEROID ROOFING

(TRADE MARK REGISTERED)

Fac-simile of the "RUBEROID MAN" on the wrapper and the word "RUBEROID" is stamped every few feet on the underside of the fabric.

Write us for a copy of our FREE BOOK which gives you valuable information about all roofings.

WRITE TO-DAY.

The Standard Paint Co. of Canada Limited

Manufacturers

MONTREAL

Dealers Everywhere

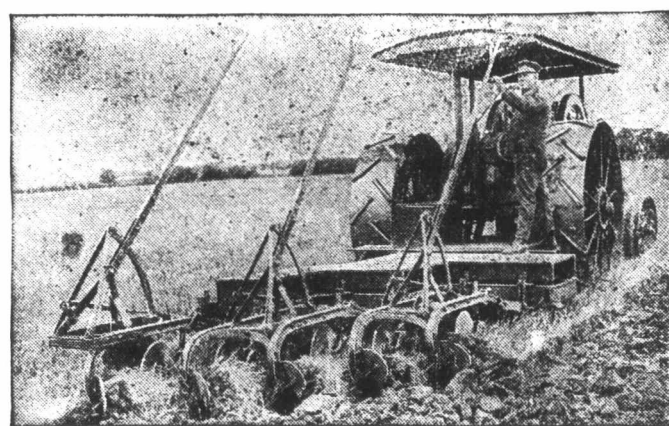
## INTERNATIONAL TRACTORS IN PLOWING CONTESTS

Not for the prizes involved, but to establish beyond question in the agricultural world the superiority of International tractors, we entered the many important plowing competitions held in America and Europe during 1909. Victory after victory for the International was the result. At the exhibition at Amiens, France; at Winnipeg, Manitoba; at Brandon, Manitoba, and at Aurora, Illinois, International tractors left the field victorious in all instances.

These demonstrations of superiority in plowing and hauling contests are duplicated every day in agricultural field work. For instance, a 20-horse power International tractor plowed 1640 acres in one season in the Province of Saskatchewan. Because of its simple, practical, correct design, the International tractor turned over the regulation number of acres every day without any mishap.

If you buy a tractor, do you not want an absolutely dependable tractor that will plow the maximum number of acres day in and day out on a minimum fuel consumption?

The practicability of International tractors cannot be questioned. The engine, the source of the power, is not an untried engine. It's the I H C engine which has been on the market for years, tested under



every conceivable condition and never found wanting. The mounting is the best that brains and money can devise, and the principle of power transmission from the engine to the main drive wheels is the principle used so successfully for years on the big, powerful steam tractors. You see there isn't an experimental feature about International tractors.

International tractors are bringing about a revolution in the methods of tilling. They are bringing a day of greater possibilities for the farmer—increased profits and freedom from slow, hard, tedious work. These tractors are equally serviceable for hauling purposes and delivering power from the belt.

Besides International tractors, the I H C line includes general purpose gasoline engines from 1 to 25-horse power, vertical and horizontal, portable and stationary, adapted for all farm work.

It will be of considerable advantage to you to call on our local agent for catalogues and full information.

Write International Harvester Company of America at nearest branch house for these today.

### THE IHC LINE

LOOK FOR THE IHC TRADE MARK. IT'S A SEAL OF EXCELLENCE AND A GUARANTEE OF QUALITY.

**CANADIAN BRANCHES:** Brandon, Calgary, Edmonton, Hamilton, London, Montreal, Ottawa, Regina, Saskatoon, St. John, Winnipeg, Yorkton.

**INTERNATIONAL HARVESTER COMPANY OF AMERICA**  
CHICAGO (Incorporated) U.S.A.

### FIRE-GUARDS.

Can a man collect damages for a building on the prairie without fire-guard, and if not, how wide must the guard be according to law?

W. J. G.

Ans.—A man can collect damages for a building burned or for damage done by prairie fire, whether his property is guarded or not.

### PROTECTING IMPLEMENTS

We are living in the herd law section of Saskatchewan and would like to be enlightened regarding this law.

1. Can a man run at large a bull, if registered, and if so at what age can he be allowed to run at large?

2. Providing a farmer has carriages, tools, etc., stored carefully away in an implement shed near his dwelling, has he to barricade the building to protect

contents from cattle running out through winter, or is owner of these cattle obliged to pay damages caused by his cattle by reason of them through hunger and thirst having smashed or damaged the machinery?—SUBSCRIBER.

Ans.—1. No, not at any age.

2. Under the fence ordinance a farmer would not be able to recover damages unless his property was surrounded by a lawful fence.

### POWER OF WINDMILL

What horse power will the average 10 ft. windmill, in a wind with a velocity of 30 miles per hour, make?—G. E.

Ans.—The horse power developed by windmills having the same diameter wheel, varies a great deal with the different makes. In general the steel windmill will develop about twice the power that a wooden one will, under the same conditions. Practically all tests of windmills have been made in the United States under wind conditions of less than thirty miles an hour. The following are results of tests of 12 ft. wheels of different makes (no tests of 10 ft. wheels being available), where the wind velocity was twenty miles per hour.

Kind of Wheel.	Diameter.	No. of Sails.	Horse Power.
Wood	12 ft.	96	.357
Steel	12 ft.	18	1.05
Steel	12 ft.	21	.606

A ten foot steel windmill will develop from three-fourths to one horse power when the wind velocity is thirty miles per hour. It is important to see that all friction parts of the mill are kept carefully oiled in order to get the greatest possible power.

### BOILER INSPECTION

1. What are the duties of the boiler inspector in Saskatchewan?

2. Can he condemn an engine and forbid you to use it, and if forbidden to use it for threshing, could it be used for home work?

3. If condemned should he give a written statement to that effect or not?

4. If the inspector comes and without condemning the engine, can he deliberately pound holes in it? After a week or so can he come back and on finding the hole fixed, pound two more holes when he knows it can't be fixed, and leaves no statement or any word as to why he did this, the owner being absent?—R. E.

Ans.—1. Send to deputy minister of public works, Regina, for copy of Steam Boilers' Ordinance.

2. If an inspector condemns an engine you would not be at liberty to use it either at home or away from home.

3. The inspector should give a written statement if requested.

4. No. If any inspector should be guilty of the conduct referred to by you in your last question you should immediately report him to the minister of public works at Regina, and in any event any person has the right to appeal against the decision of an inspector, and the department will take the matter up and have the boiler inspected by someone else.

## Questions & Answers

### VETERINARY

Enquiries dealing with matters of a veterinary nature are answered through our columns by a competent veterinarian free of charge to our subscribers. Details and symptoms must be fully and clearly stated on only one side of the paper. Full name and address of the writer must accompany each query, as a guarantee of good faith but not necessarily for publication. When a reply is required by mail one dollar (\$1.00) must be enclosed.

### DISEASE OF STIFLE JOINT.

Horse ten years old dislocated patella a year ago; blistered repeatedly with little effect. Still very lame, but in good condition. Would you recommend an operation after so long standing, or would firing and blistering be of any use?—J. B.

Ans.—We know of no operation that is likely to be of any benefit in this case. The lameness has existed so long that by this time certain destructive changes have taken place in the joint, consequently treatment of any kind is not likely to be successful.

### BOAR FLESH AS FOOD.

Does the fact that a hog has been neglected to be castrated render the meat any less wholesome, or is the taste in any way affected?—I. R.

Ans.—There are two principal reasons why the flesh of "boars" is ob-