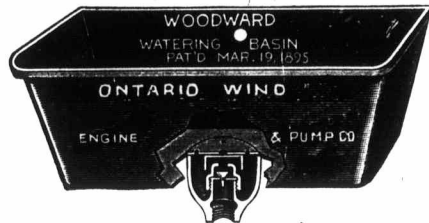


Water Basins

SUPERIORITY OVER ALL OTHERS.



Point 7.—Note the little rubber valve (patent) in the lower part of basin. This prevents any return of water from basin. Other basins allow water to flow from the basins, which does not prevent contagion in case of disease. OURS DOES.

Point 8. (See next issue.)

Ontario Wind Engine & Pump Co. LIMITED.
TORONTO.

For Sale: Six Ayrshire bulls, ranging from 5 months to 1 year past. Also a few cows and heifers, thoroughbred fowls, and Scotch collie dogs.

WM. STEWART & SON, MENIE, ONT.

1 2-year-old Ayrshire bull and 2 yearlings for sale.

Also a fine lot of calves, sired by Dewey, bred by Wm. Stewart & Son, Menie.

F. W. TAYLOR, Wellman's Corners, Ont.

DAVID A. MACFARLANE, KESLO, P. Q.

Ayrshire Cattle.

The blood of Nellie Osborne is largely represented in my herd, and combine style, quality and production. A few choice things for sale.

Maple Cliff Dairy and Stock Farm.

FOR SALE:

Ayrshires—6 yearling bulls, females any age. Tamworths—40 hogs and sows of different ages. Berkshires—3 hogs, a number of sows.

R. REID & CO., Hintonburg.

Farm 1 mile from Ottawa. Electric cars to farm. om

Ayrshire Bulls: Write to J. YULL & SONS, Carleton Place.

for special prices on Ayrshire bulls from 1½ years to 6 months. Four over 15 months, fit for service, from special milking stock. Sired by prize bull, Jock of Burnside—1884—also females of all ages. Shropshire sheep of all ages; a number of fine ram lambs. Berkshire pigs of either sex, of the best bacon type. B. P. Rocks.

AYRSHIRES AND YORKSHIRES.

We now offer Toronto prizewinning Ayrshires of either sex for sale; also choice young Yorkshires of either sex. All at reasonable prices. Correspondence solicited. **ALEX. HUME & CO.,**

Hoard's Station, G. T. R. Menie P. O.

EUROPEAN ADVERTISEMENTS.

HAMPSHIRE DOWN

SHEEP.

SPLENDID MUTTON, GOOD WOOL, GREAT WEIGHT.

THIS HIGHLY VALUABLE

English Breed of Sheep

Is unrivalled in its rapid and wonderfully early maturity, possessing, too, a hardness of constitution adapted to all climates, whilst in quality of mutton and large proportion of lean meat it is unsurpassed. Full information of

JAMES E. RAWLENCE,

SECRETARY HAMPSHIRE DOWN SHEEP BREEDERS' ASSOCIATION,

SALISBURY, ENGLAND.

W. W. Chapman,

Secretary of the National Sheep Breeders' Association, Secretary of the Kent or Romney Marsh Sheep Breeders' Association, and late Secretary of the Southdown Sheep Society.

Pedigree Live Stock Agent, Exporter and Shipper. All kinds of registered stock personally selected and exported on commission; quotations given, and all enquiries answered.

Address: FITZALAN HOUSE, ARUNDEL ST., STRAND, LONDON W. W. Cables—Sheepcote, London.

EUROPEAN ADVERTISEMENTS.

J. E. CASSWELL, Laughton, Folkingham, Lincolnshire.

breeder of Lincoln Long-wooled Sheep, Flock No. 46. The flock was in the possession of the present owner's great-grandfather in 1785, and has descended direct from father to son without a single dispersion sale. J. E. Casswell made the highest average for 20 rams, at the "Annual Lincoln Ram Sale," 1896 and 1897. The 1896 rams were all sold for exportation. Ram and ewe hoggs and shearings for sale, also Shire horses, Shorthorns, and Dark Dorking fowls. Telegrams: "Casswell, Folkingham, Eng." Station: Billingboro, G. N. R.

FAMOUS ALL OVER THE WORLD. ALFRED MANSELL & CO., LIVESTOCK AGENTS AND EXPORTERS, SHREWSBURY.

BRITISH STOCK selected and shipped to all parts of the world. Write for prices to ALFRED MANSELL & CO., Shrewsbury, England, or to our American representative, Robert Miller, Stouffville, Ont., Canada.

HENRY DUDDING, RIBY GROVE, STALLINGBOROUGH, LINCOLN, ENGLAND. Breeder of Lincoln Longwool Sheep and Shorthorn cattle. The Riby Flock of upwards of 1,400 Ewes holds an unequalled record for true type, merit, and quality. Its produce and their descendants have won the highest honors at all the principal exhibitions and shows throughout the world; its wool exhibits being unbeaten. Established upwards of 140 years. Its produce leads the way from the fact that satisfaction is given. The Riby Shorthorn Herd of upwards of 300 selected specimens of Booth, Bates, Cruickshank, and Scotch strains, is one of the largest Herds in Great Britain. Its principal Stud Bulls are: "Pride of Fortune" 73240, s. "Pride of Morning" 145694, d. "Flora 2nd," by "William of Orange" 50694; "Golden Robin" 68718 (rich roan), s. "Roan Robin" 57992, d. "Golden Sunshine," by "Royal James" 54972; "Prompter" (Vol. XLV.), by "Prefect" 69255, d. "Kissington Lass," by "Umpire 13th," 1st and champion at Omberville, 1898; "Rosario" s. "Wiltshire Count" 69821, out of "Rose Blossom" (G. Harrison). This bull, his sire and dam, won 84 prizes, including first and champions. Annual Home Sale, Tuesday, July 24th, 1900. Telegrams: "Dudding, Keeby." Rail Stations: Stallingborough, 3 miles; Great Grimsby, 7 miles.

Present Offering:

Dorset lambs (either sex). Shropshire lambs (either sex). Chester White pigs (June and Sept. litters) of the bacon type.

For particulars, write to

R. H. HARDING, THORNDAL, ONT.

Dorset Horn Sheep

THE largest flock in America. The most celebrated prizewinners at the Columbian Exhibition and Canadian exhibitions. Contains more Royal winners than any other. Awarded 5 out of 8 first prizes at Toronto, London and Ottawa in 1900. Flock of 300. Stock for sale always on hand.

John A. McGillivray, Uxbridge, Ontario.

Dorset Horn Sheep

PARTIES interested in raising early lambs for Easter market will make no mistake in using this breed. We have two good shearings and a number of good ram lambs for sale at from twelve to twenty-five dollars—two winners at large shows. Our Polled Angus cattle are doing well.

James Bowman, Elm Park, GUELPH.

LEICESTER

Rams, ram lambs, ewes. All lambs sired by the first-prize ram at Toronto in '99. Also Shorthorn cattle, Berkshire pigs, and Embden geese.

MAC CAMPBELL, Northwood.

Leicesters

only. Rams and ram lambs, shearing ewes and ewe lambs, having the best blood, with quality and size.

C. & E. WOOD, Freeman, Ont.

LYNDEN FARM.

OXFORDS AND SHORTHORNS.

IMPORTED and home-bred rams. Also, one 10-months bull. Post and telegraph offices.

R. J. HINE, Dutton, Ont.

BROAD LEA FARM.

Ram and Ewe Lambs) Oxford Down Sheep (Yearling Rams)
FOR SALE.

HENRY ARKELL, Teeswater, Ontario.

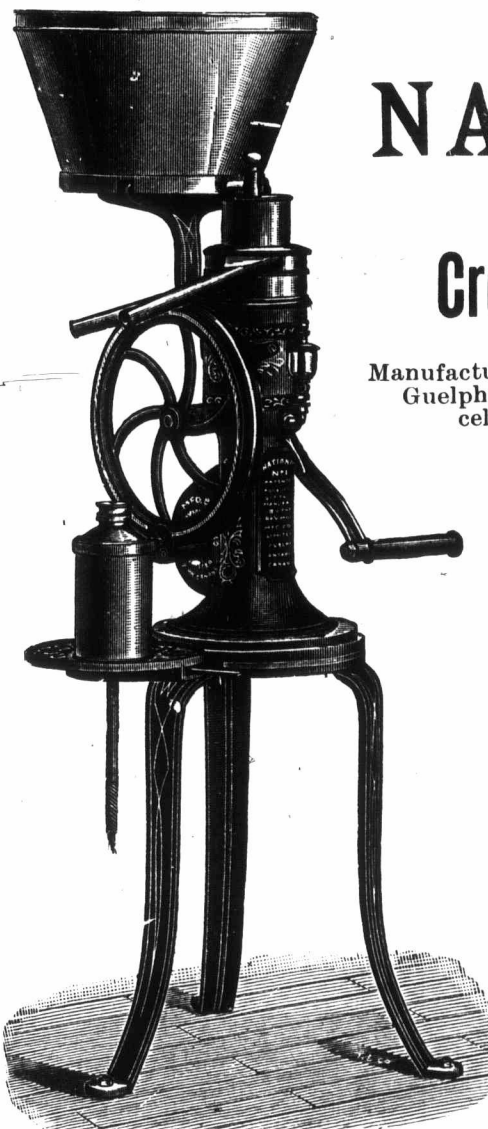
Oxford Down Sheep.

IMPORTATION ANNUALLY. 100 ram and ewe lambs. A few fine young Bronze turkeys. Also a nice lot of Barred Rock cockerels. For sale reasonable.

HENRY ARKELL, Arkell, Ont.

IN WRITING

PLEASE MENTION FARMER'S ADVOCATE.



THE NATIONAL FARM Cream Separator

Manufactured by the Raymond Mfg. Co. of Guelph, Limited, manufacturers of the celebrated Raymond Sewing Machines.

THE National is an up-to-date machine, leading all others in separating cream by centrifugal force. It is the farmers' choice, because it runs easy, skims fast and clean, and makes a perfect cream, containing any per cent. of butter-fat desired. It is also easier to clean than any other. The National is built of the very best material suitable for the construction of a high-speed machine, and with proper care should last a lifetime. The bearings are interchangeable and easily adjusted. Every machine is guaranteed to do good work, and a trial of the "National" is solicited before purchasing any other. The already large sale of the "National," and the growing demand for it, shows how much the Canadian farmers appreciate a Canadian-made machine that does its work so easily and well, and at the same time returns such a large profit on the small investment. Ask for the "National"; try it and buy it.

THE CREAMERY SUPPLY CO., GUELPH, ONT.

General agents for Ontario.

W. G. GLENN, 469 ONTARIO ST., LONDON, ONT.

Agent for the Counties of Middlesex and West.

"NATIONAL" NO. 1 HAND POWER. Capacity, 330 to 350 lbs. per hour.

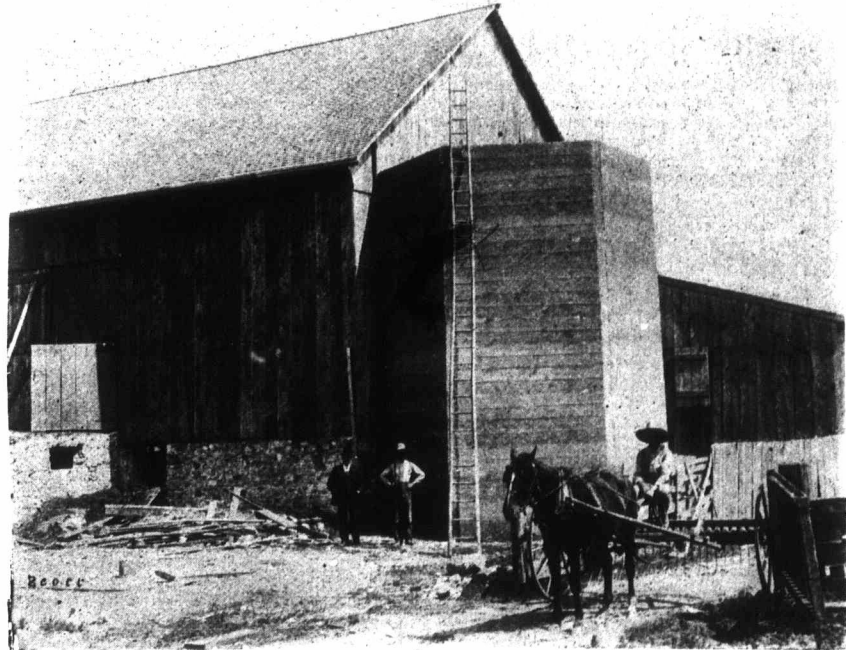
The Raymond Mfg. Co'y of Guelph, Ltd. GUELPH, ONT.

MR. JAMES BEGG'S CEMENT SILO, ST. THOMAS, ONT.

BATTLE'S THOROLD CEMENT

By our H. W. HAGAR, July, 1900.

Total cost, \$142.00.



CEMENT SILO OF MR. JAMES BEGG, ST. THOMAS.

Size—14 feet inside diameter; 25 feet in height. Hexagon shape (6 sides). Built with BATTLE'S THOROLD CEMENT.

Material and Labor. Cement, 63 barrels (in paper sacks); gravel, 45 cubic yards; stone, 12 cubic yards; labor, 54 days (1 man). Walls 16 inches thick at bottom, 10 inches at top. The labor was divided as follows: 2 men 1 day putting in footings and one-half of the stanchions; 3 men 1 day building; 1 man 1 day building walls; 6 men 7 days building; 3 men 1 day to plaster inside and put in floor.

Estate of JOHN BATTLE, Thorold, Ont.