

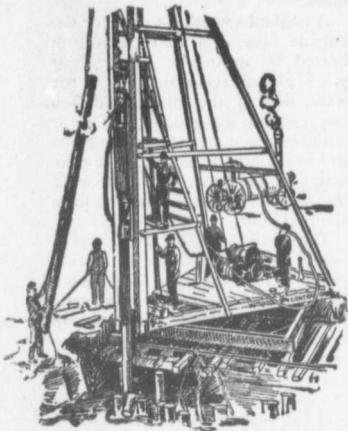
The Canadian Bridge Co., Limited

WALKERVILLE, ONT.

MANUFACTURERS OF

RAILWAY AND HIGHWAY BRIDGES

Locomotive Turn Tables,
Roofs, Steel Buildings and
Structural Iron Work of all descriptions



Pile Driving

on land or water by Steam Pile Drivers or Drop Hammers.

Portable Boilers, Hoisting Engines, Pumping Machinery
To Let—Bridge Building, Trestle Work
Wharves, Dams, Diving Submarine
Work and General Contracting.

WM. HOOD & SON
10 Richmond Sq. - MONTREAL

CANADIAN EMPLOYMENT AGENCY

Licensed Labor Contractors
.. 182½ St. Antoine Street ..
MONTREAL
All classes of labor, skilled and otherwise
supplied at short notice.
Special attention given to gangs for construction, lumber camps, etc.
All Orders given Special Attention.

The Ontario Accident Insurance Co.

ACCIDENT, EMPLOYERS, ELEVATOR
AND GENERAL LIABILITY

104 St. Francois Xavier St Montreal

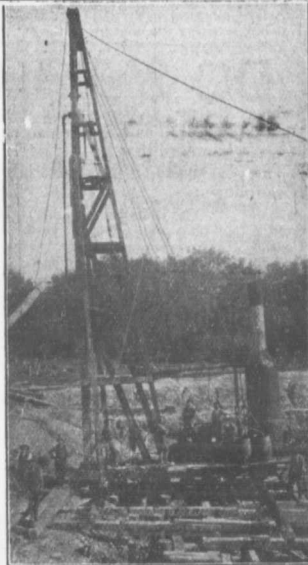
HEADQUARTERS FOR

Pig Lead, Pig Tin, Solder,
and Manganese Anti-
Friction Babbitt Metal.

Syracuse Smelting Works
Montreal, Que.

The Old Machinery

or plant, or tools for
which you have no
present use, might be
sold or rented to some
other reader of the
CONTRACT RECORD by
the investment of a
few dollars in advertising.



PILE DRIVING

and Foundation Work.

By 5-ton Automatic Steam Pile Hammer,
Water Jet or Drop Hammers, Dock Building,
Submarine Work and Dredging.

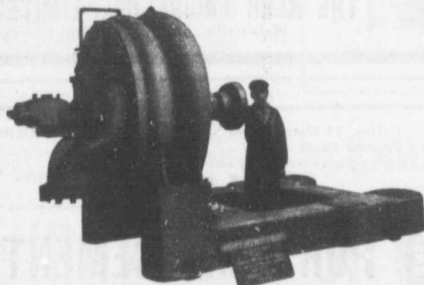
BUILDING MOVER AND WRECKER

General Contracting.

JNO. E. RUSSELL, - Toronto
908 Queen St. E.—Phone M. 2007.

WORTHINGTON PUMPS

FOR WATER WORKS SERVICES



Worthington 2 Stage Turbine Pump for the Winnipeg
Water Works, Capacity 5,000,000 per 24 hours.

We Have Two Stage Pumps in Operation Delivering Against 160 Pounds Pressure

"WORTHINGTON" TURBINE PUMPS

for heads up to 2,000 feet, are
Reliable, Durable, Efficient
and exceedingly simple

WE ALSO MANUFACTURE

Boilers, Tanks, Filters
Etc.

The John McDougall Caledonian Iron Works Co.,

ESTABLISHED 1852

Montreal.

Limited.