

Issued Each Week—Only One Dollar A Year

VOL. XXXII.

NUMBER 12

FARM AND DAIRY

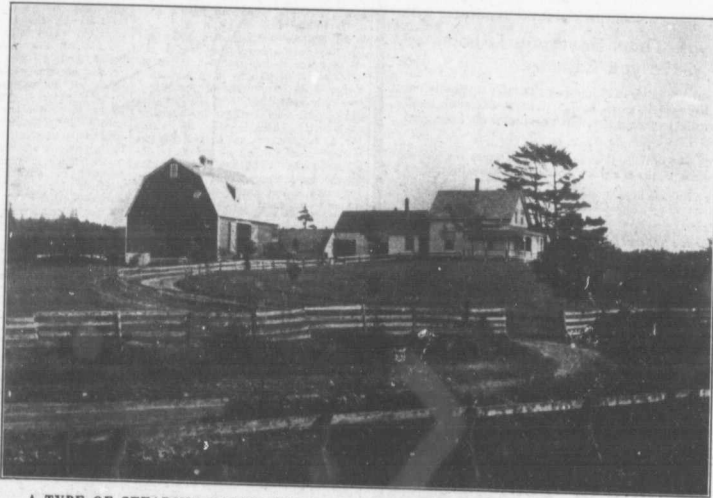
RURAL HOME

Dairy and Cold Storage
are Contents

PETERBORO, ONT.

MARCH 20

1913



A TYPE OF STEADING CONDUCIVE TO COMMUNITY INTEREST AND BETTERMENT

The ideal rural community is the one in which many are land holders and few are landless; that is, where small, well-cultivated farms, such as that of T. Stuart, Colchester Co., N.S., whose buildings are here illustrated, are the rule. The land holder will always take more interest in community betterment than will the hired man or the tenant; it is more to his interest to do so. Hence it is that in those countries where farms are small, as in Denmark for instance, that cooperative societies flourish, that roads and rural schools are of a high standard and that the country church does not languish for lack of funds or attendants.

—Photo by an editor of Farm and Dairy.

DEVOTED TO
BETTER FARMING AND
CANADIAN COUNTRY LIFE