

POOR DOCUMENT

MC2035

THE EVENING TIMES AND STAR, ST. JOHN, N.B., SATURDAY, DECEMBER 18, 1920

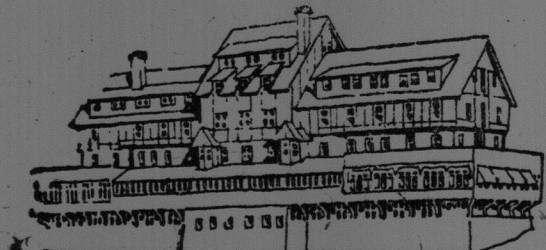
39



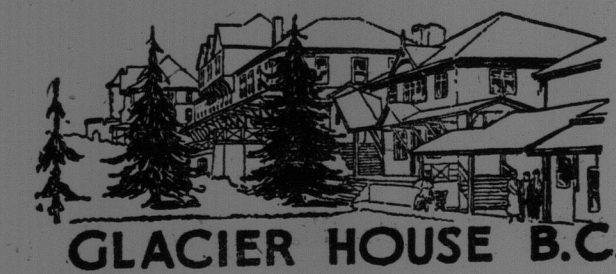
EMPRESS HOTEL - VICTORIA



HOTEL VANCOUVER



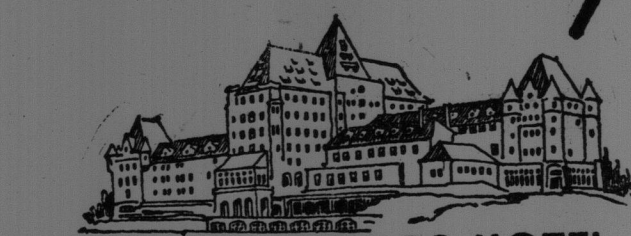
HOTEL SICAMOUS, B.C.



GLACIER HOUSE B.C.



CHATEAU LAKE LOUISE



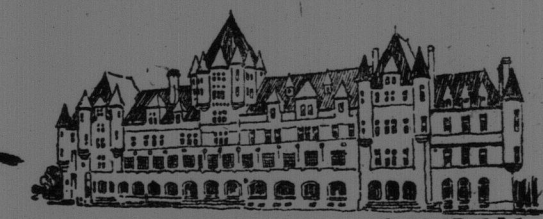
BANFF SPRINGS HOTEL



HOTEL PALLISER - CALGARY



ROYAL ALEXANDRA - WINNIPEG



PLACE VIGER - MONTREAL



CHATEAU FRONTENAC - QUEBEC



MCADAM STATION HOTEL



THE ALGONQUIN - ST. ANDREWS, N.B.

SPANS THE WORLD

The Canadian Pacific passes through five hundred miles of the most majestic mountain scenery in the world, reaching every important city and all the principal agricultural, industrial and commercial districts of Canada, and connecting also directly with many in the United States. It has a total owned or controlled mileage of 18,860, while the Canadian Pacific Ocean Services provide large fleets of fast, luxurious passenger steamers on both Atlantic and Pacific Oceans.

The reason why you should utilize any of the Canadian Pacific's features—such as its splendid passenger service, fast, frequent and luxurious, connecting our big cities and reaching our beautiful holiday resorts—its magnificent hotels that span Canada from Atlantic to Pacific—its highly-efficient freight service, with 87,500 cars in constant transit across the Continent—its telegraph system—its express service (Dominion Express)—or its Ocean Services to Europe and the Orient—is because the service throughout is

CANADIAN PACIFIC

There is no higher standard
of transportation
service.

N. R. DESBRISAY

District Passenger Agent,
ST. JOHN, N. B.

