

OUR CHESS COLUMN.

TO CORRESPONDENTS.

J. W. S., Montreal.—Papers to hand. Thanks.

The following additional particulars have been received with reference to the Tournament at Berlin:—

On Monday, the 5th inst., Dr. Zukertort drew with Dr. Noa, Mason beat Paulsen, Schwarz beat Mason, and Blackburne won his game from Louis Paulsen.

On Tuesday Zukertort won from Schultz and Minckwitz, and Bloman beat Mason.

On Wednesday Blackburne beat Schmidt and Winawer, Zukertort won from Winawer, and Mason beat Schultz.

On Thursday Zukertort beat Schwarz, Mason beat Schallop, and Blackburne won from Minckwitz.

On Friday Schallop beat Zukertort, Blackburne beat Winawer and Mason beat Wemmers.

The complete list of the contestants contains the following names:—Berger, Blackburne, Mason, Minckwitz, Noa, L. Paulsen, W. Paulsen, Pitschel, Bloman, Schallop, Schmidt, Von Schultz, Schwarz, Tachigorin, Wemmers, Winawer, Wittek, Zukertort.

THE CHESS CONGRESS.

BERLIN, September 15.—In the chess congress Blackburne beat Schallop; W. Paulsen beat Mason.

BERLIN, September 16.—The first prize in the chess congress was awarded to Blackburne, who won 12 games; second prize to Sewitzer, who won 9.—Montreal Gazette, Sept. 16.

From the above we learn that Mr. Blackburne has won the first prize in the Berlin Tournament. His success will be most agreeable to English chessplayers, who were much disappointed at the result of his late contest with Zukertort. He will receive, no doubt, a very hearty welcome on his return to England.

The Tournament of the New Orleans Chess Club is being carried on with vigour, and of the sixteen contestants, Mr. Labatt, as yet, seems to have made the best score. Out of seventeen games played he has won 14 and lost 3.

The next meeting of the Counties' Chess Association of England, will take place at Leamington during the week commencing Monday, October 14th.

It will be a subject of regret to many lovers of chess to hear of the discontinuance of the Chess Column in Design and Work. New arrangements as regard the form and scope of the work are the reason assigned.

It is stated in the issue of the Chessplayer's Chronicle of the 22nd ult., that no acceptance has as yet been given by the members of the Philadelphia Club to the terms offered by the St. George's Club, but they suggest that the stakes shall be sufficient only to cover expenses, that is that the losers shall refund to the winners the amount expended on telegrams, &c.

Mr. Blackburne's play in his late match with Dr. Zukertort seems to bear out the opinion which we have heard expressed, viz., that he is especially good in tournaments, but only an indifferent match player.

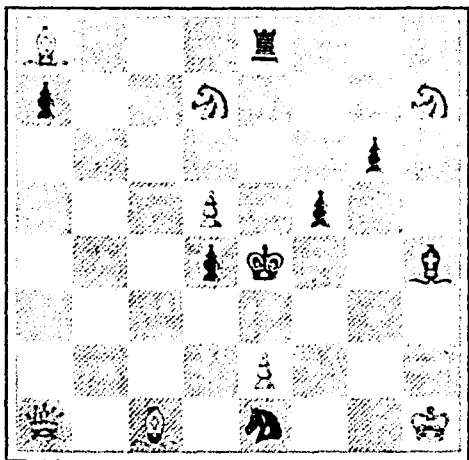
On the other hand, Dr. Zukertort would seem to be quite in his element when playing a match, and in many of the games in his recent tilt with Blackburne the vigor and precision of his play stand out in marked contrast to the hesitating and timorous policy of his opponent.

We must confess that to us the late match, so far as Mr. Blackburne is concerned, has been a great disappointment.—Globe-Democrat, St. Louis.

PROBLEM No. 347.

By Dr. Gold.

BLACK.



WHITE.

White to play and mate in two moves.

GAME 475TH.

CHESS IN LONDON.

The eighth game in the match between Messrs. Blackburne and Zukertort.

(Hudson Piano.)

White.—(Mr. Blackburne.) Black.—(Mr. Zukertort.)

- 1. P to K4 1. P to K4
2. K Kt to B3 2. Q Kt to B3
3. B to B4 3. B to B4
4. P to B3 4. Kt to B3
5. P to Q3 5. P to Q3
6. B to K3 6. B to K3
7. Q Kt to Q2 7. Kt to K2
8. Kt to Bsq 8. P to B3
9. Kt to Kt3 9. P to K R3
10. Q to K2 10. P to Kt4
11. Castles (Q side) 11. Kt to Kt3
12. P to Q4 12. Q to K2
13. Kt to B5 (a) 13. B takes Kt
14. P takes B 14. Kt to B5
15. B takes Kt 15. K P takes B
16. Q R to Ksq 16. Q takes Q
17. R takes Q (oh) 17. Kt to Bsq
18. K R to Ksq 18. R to Ksq (b)
19. R takes R (oh) (c) 19. Kt takes R
20. P to K Kt4 20. P takes P (en passant)
21. B P takes Kt 21. P to Q4
22. B to Q3 22. P to B3

Drawn game (d)

NOTES.

(a) This leads to an even game, though White gains first possession of the open K file with doubled Rooks.

Probably Mr. Blackburne thought that the latter contingency, which is usually a favourable one, should have yielded him some retainable advantage. However, excepting perhaps P K R4, the consequences of which required great forethought, we see no other feasible line of continuation for White.

(b) The proper rejoinder, which completely neutralises the action of the opponent's doubled Rooks.

(c) If Kt to Q2, Black's K will first move to Kt2; and should White then attempt to enter at K7, then Black would make himself safe by P to Q4 followed by B to Qsq.

(d) Black will bring his R to K2 via R2 to face that of the opponent, and neither side has any means of escape.—From the Field.

SOLUTIONS.

Solution of Problem No. 345.

- White. Black.
1. Q to K sq 1. Any move
2. Mates acc.

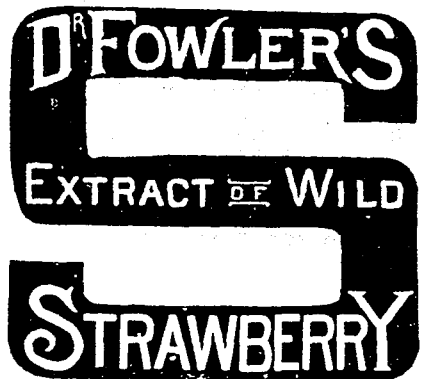
Solution of Problem for Young Players No. 343.

- White. Black.
1. B to Q Kt4 1. Any
2. Mates acc.

PROBLEMS FOR YOUNG PLAYERS No. 344.

- White. Black.
K at K B3 K at K R3
R at K B7 Pawns at K2
B at Q B2 and K Kt3 and 4.
Pawn at K Kt3

White to play and mate in three moves.



Cures Cholera, Cholera Morbus, Dysentery, Cramps, Colic, Sea Sickness and Summer Complaint; also Cholera Infantum, and all Complaints peculiar to children teething, and will be found equally beneficial for adults or children.

FOR SALE BY ALL DRUGGISTS. T. MILBURN & CO., Proprietors, Toronto.

\$777 A year and expenses in agents. Cash free Address: P. O. VIC'ERY, Augusta, Me.

THE BURLAND LITHOGRAPHIC COMPANY (LIMITED)

CAPITAL \$200,000,

GENERAL

Engravers, Lithographers, Printers

AND PUBLISHERS,

3, 5, 7, 9 & 11 BLEURY STREET,

MONTREAL.

THIS ESTABLISHMENT has a capital equal to all the other Lithographic firms in the country, and is the largest and most complete Establishment of the kind in the Dominion of Canada, possessing all the latest improvements in machinery and appliances, comprising:—

- 12 POWER PRESSES
1 PATENT LABEL GLOSSING MACHINE.
1 STEAM POWER ELECTRIC MACHINE.
2 PHOTOGRAPHING MACHINES.
4 PHOTO-ENGRAVING MACHINES.

Also CUTTING, PERFORATING, NUMBERING, EMBOSSING, COPPER PLATE PRINTING and all other Machinery required in a first class business.

All kinds of ENGRAVING, LITHOGRAPHING, ELECTROTYPING AND TYPE PRINTING executed IN THE BEST STYLE.

AND AT MODERATE PRICES

PHOTO-ENGRAVING and LITHOGRAPHING from pen and ink drawings A SPECIALITY.

The Company are also Proprietors and Publishers of the

CANADIAN ILLUSTRATED NEWS, L'OPINION PUBLIQUE, and

SCIENTIFIC CANADIAN.

A large staff of Artists, Engravers, and Skilled Workmen in every Department.

Orders by mail attended to with Punctuality; and prices the same as if given personally.

G. B. BURLAND.

MANAGER

\$72 A WEEK. \$12 a day at home easily made. Costly Outfit free. Address TRUK & CO., Augusta, Maine.

ESTABLISHED 1845.



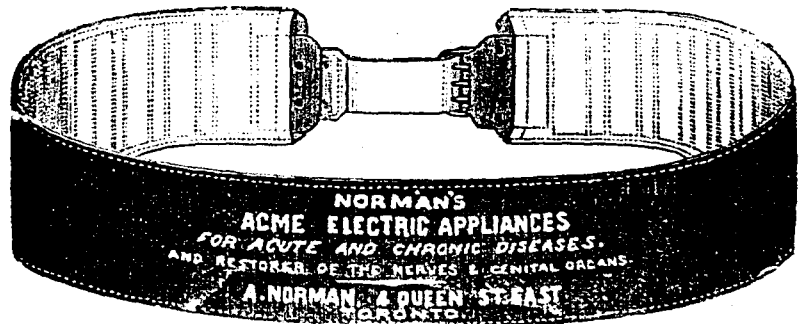
The Exhibition of 1880 was acknowledged by all to have been a great success, and in no respect was it more so than in that portion of it in which OWEN MCGARVEY & SON took part, their exhibit being acknowledged by all to have been the largest and finest that had been seen not only at that Exhibition, but at any visited that season, and which opinion was endorsed by our worthy Governor-General, who delayed at our exhibit to examine the goods and expressed himself as highly pleased with the display, then the judges expressed their opinion in a most practical manner by awarding 7 prizes and a diploma, for the largest and best collection of Furniture, exactly the same as was awarded the Establishment 22 years before, showing that the progress is not that of a few years, but is continued now into the 37th year.

O. McGarvey & Son, MANUFACTURERS AND WHOLESALE DEALERS IN EVERY STYLE OF PLAIN AND FANCY FURNITURE, 7, 9 & 11 St. Joseph Street, corner McGill Street, MONTREAL.

Smoke Gold Flake Cigarettes.

NORMAN'S ELECTRO-CURATIVE BELT INSTITUTION.

(ESTABLISHED 1874.)



A. NORMAN, Electrician.

4 QUEEN STREET EAST, TORONTO, ONT.

CONSULTATION FREE Large Circulars, with Testimonials, may be had on application.



DEPARTMENT OF PUBLIC WORKS AUCTION SALE.

PUBLIC NOTICE is given that, under instructions from the Honorable the Minister of Public Works, there will be offered for sale, by PUBLIC AUCTION, Messrs. Shaw & Gowley, Auctioneers, in the City of Montreal, on WEDNESDAY, 19th October next at ten o'clock a.m., that property situated on line of Saint Gabriel Street and Fortification Lane, in the said City of Montreal, known as the Geological Museum property, on which are erected a stone building, heretofore known as the "Geological Museum," a brick building, "Keeper's Residence," and various outbuildings in rear of same; the said property being designated on the Cadastral Plan of the City of Montreal and Book of Reference thereto as No. 142, Centre Ward, measuring 61 feet on St. Gabriel Street and 133 feet on Fortification Lane, more or less, said to contain 8,011 feet, superficial area, all English measure.

The property is in close proximity to the Court House and City Hall. The whole to be sold in one lot. Title perfect.

Terms, 50 p.c on execution of deed and balance in two equal annual instalments, with interest at 6 per cent. Premises may be visited on application to the auctioneers.

Sale to take place on the grounds.

By order, P. H. ENNIS, Secretary.

Ottawa, 14th September, 1881.

THIS PAPER MAY BE FOUND ON FILE AT GEO. P. HOWELL & CO'S Newspaper Advertising Bureau (10 SPRUCE STREET), WHERE ADVERTISING CONTRACTS may be made for it in NEW YORK.

The Scientific Canadian

MECHANICS' MAGAZINE

AND

PATENT OFFICE RECORD

A MONTHLY JOURNAL

Devoted to the advancement and diffusion of Practical Science, and the Education of Mechanics.

THE ONLY SCIENTIFIC AND MECHANICAL PAPER PUBLISHED IN THE DOMINION.

PUBLISHED BY

THE BURLAND LITHOGRAPHIC CO.

OFFICES OF PUBLICATION,

5 and 7 Bleury Street, Montreal.

G. B. BURLAND General Manager.

TERMS:

One copy, one year, including postage... \$2.00 One copy, six months, including postage... 1.10

Subscriptions to be paid in ADVANCE.

The following are our advertising rates:—For one monthly insertion, 10 cts. per line; for three months, 9 cts. per line; for six months, 8 cts. per line; for one year, 7 cts. per line; one page of illustration, including one column description, \$30; half-page of illustration, including half column description, \$20; quarter-page of illustration, including quarter column description, \$10. 10 per cent. off on cash payments.

INVENTIONS AND MACHINERY, &c., or other matter of an original, useful, and instructive character, and suitable for subject matter in the columns of the MAGAZINE, and not as an advertisement, will be illustrated at very reduced rates.