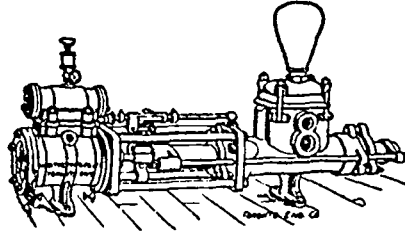


# Waterous Engine Works Co.,

WINNIPEG, MAN.

Engines and Boilers,  
Saw Mills.

Saw Mill Machinery,  
Northey's Steam Pumps,  
Grain Choppers,



## We are HEADQUARTERS for

To Dealers who want nice CLEAN GOODS at ROCK-BOTTOM PRICES, communicate with us.

Brooms, Whisks, Brushes, Woodenware, Matches, Cordage, General Store Supplies, Fancy Goods, Toys and Games, Sporting Goods, Glass and Chinaware.

# H. A. NELSON & SONS,

MONTREAL - AND - TORONTO.

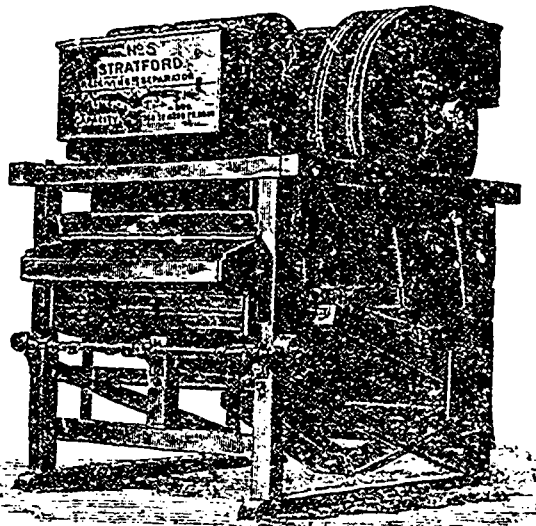
Represented in Manitoba and British Columbia by MR. W. S. CRONE.

## STUART & HARPER

AGENTS FOR

Stratford Mill Building Co.  
Flour Mill and Elevator Machinery  
Dustless Warehouse and Elevator Separators  
Dodge Wood Pulleys  
New and Second-hand Machinery of all kinds.

758 to 764 Main Street,  
Winnipeg.



# Cigars

Made in your own Country.

HISPANIA, RED CROSS, KHEBIVE  
Try these Brands. They are Unsurpassed.  
BRYAN & LEE, Winnipeg.

Andrew Allan, President. John McKechnie, Supt  
F. H. Brydget, Vice-President W. R. Allan, Sec.-Treas

## THE VULCAN IRON COMPANY,

OF MANITOBA LIMITED

MILL ROLLS GROUND & CORRUGATED  
Architectural Iron Work.

## ENGINE AND BOILER WORKS.

GENERAL BLACKSMITHING.

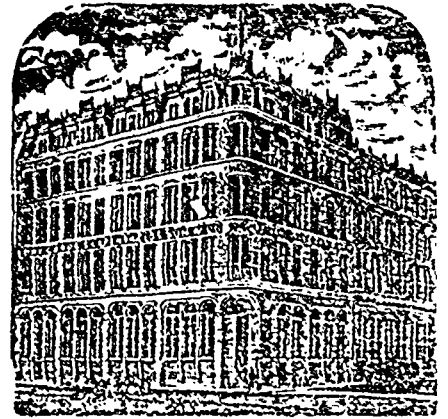
BRIDGE BUILDING A SPECIALTY.

TENDERS SOLICITED.

POINT DOUGLAS AVE., WINNIPEG.

# S. Greenshields Son & Co.

MONTREAL AND VANCOUVER, B.C.



We are offering for Spring Delivery the following special lines:

Grums' Prints Tokio Pongees.  
Priestley's Waterwitch Serges, Gravettes,  
Coutilles, Lustres & other Mohair Effects  
Harrison's Brussel's Carpets.

Also a very large range of COTTON GOODS

Samples with C. J. REDMOND, Room 18,  
McIntyre Block, Winnipeg.

## McMASTER & CO.,

—WHOLESALE—

Woolens, Tailor's, Trimmings,  
CARPETS,  
AND GENERAL DRY GOODS.  
TORONTO, ONT.

REPRESENTED BY E. C. S. WETMORE.

## JAS. McCREADY & CO.,

WHOLESALE

Boot and Shoe Manufacturers,  
MONTREAL

W. WILLIAMS, AGENT.

SAMPLE ROOM—Room M, McIntyre Block,  
MAIN STREET, WINNIPEG.

## M. and L. Samuel Benjamin & Co.,

26, 28, 30 FRONT STREET, WEST.  
TORONTO

\* Shelf and Heavy Hardware,  
\* Metals, Tin Plate, etc.  
\* Lamp Goods and Gas Fixtures.  
Plumbers and Steam Fitters' Supplies

Special attention given to import and export trade.

English House: Samuel Sons & Benjamin,  
161 Fenchurch St., London, E.C.