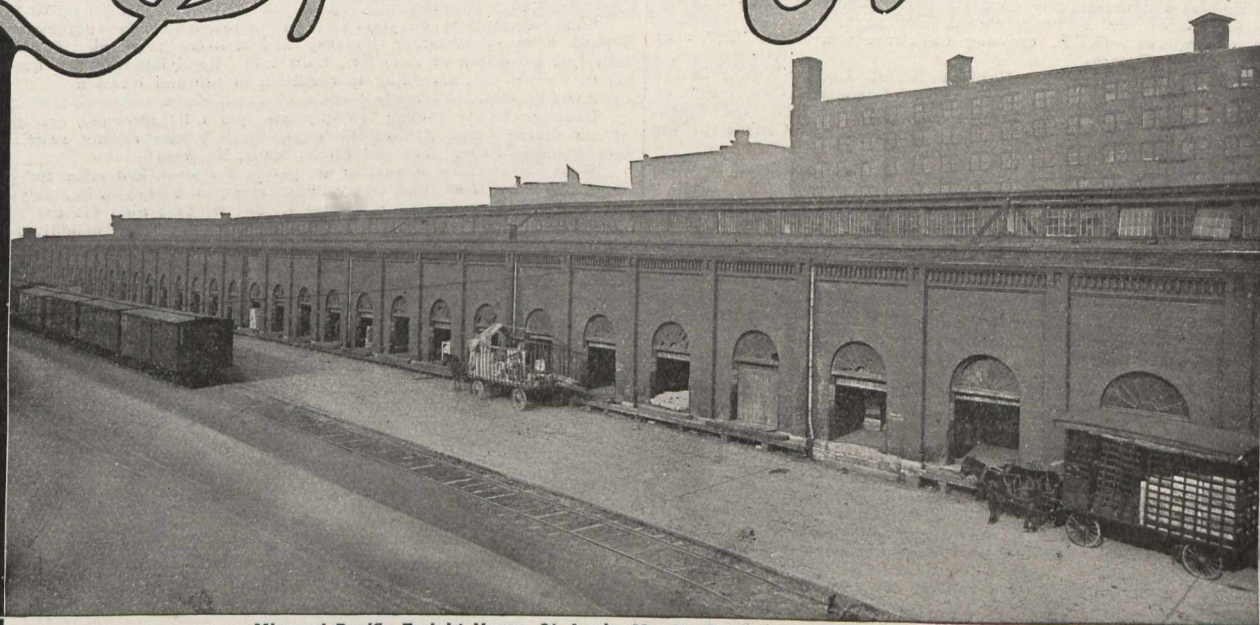


Barrett Specification Roofs



Missouri Pacific Freight House, St. Louis, Mo. Roofed in 1880—30 years ago.

Make Your Specifications Exact

THERE are a number of ways to lay a roof of coal tar pitch, tarred felt and gravel so as to give fairly good service.

There is one way, however, of laying such a roof to give *maximum service*—by that we mean a service of 20 years and over—order your contractor to lay it “according to The Barrett Specification” and *incorporate the full Specification in the contract*.

A roof so laid has no superior. In fact, no other approaches it in point of economy. There may be other good methods. The one suggested is *absolutely certain*. It insures workman-

ship that is efficient, the use of materials of the highest grade, and results that are inevitable.

Accordingly, do not order on your new building “a gravel roof” or a “pitch and gravel roof” but state that the roof shall be laid “according to The Barrett Specification.” Then you know what you are getting. The chances are if you have a first class contractor he will follow the Specification anyway. But if you follow our suggestion, *there will be no question about it*.

Copy of The Barrett Specification sent free on request to anyone interested.

The Paterson Manufacturing Co., Limited
 TORONTO, MONTREAL, WINNIPEG, VANCOUVER, ST. JOHN, N.B. HALIFAX, N.S.