

G. B. MURPHY & CO.

IN THE MARKET ALL THE YEAR ROUND

THE LEADING GRAIN MEN OF WINNIPEG

LICENSED AND BONDED

MEMBERS OF THE WINNIPEG GRAIN EXCHANGE

Are you familiar with the Grain situation?

If not, **you will find** our market reports worth money to you. They are sent absolutely **free** anywhere, to anyone who asks. We are noted for paying our customers **the highest prices**, giving them **liberal advances** and **prompt settlements**.

WE CAN DO FOR YOU WHAT WE ARE DOING FOR OTHERS

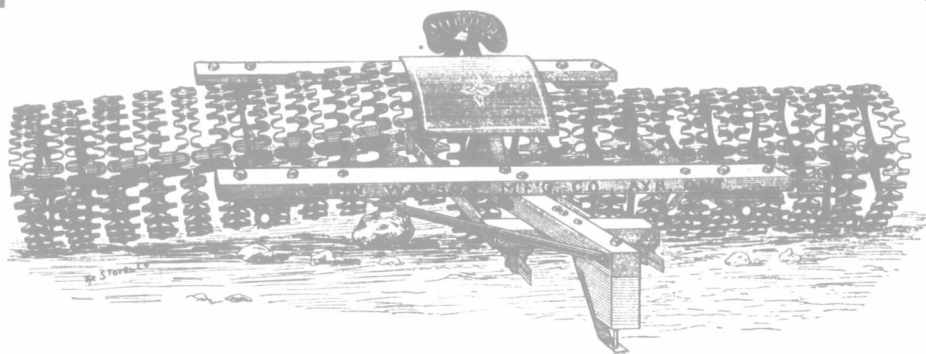
Wire, write, or 'phone us before selling, and give us a chance to satisfy you. Enquire from the Eastern Townships and Union Banks as to our reliability.

REMEMBER THE NAME:

G. B. MURPHY & CO.

WINNIPEG, MAN.

WATSON'S



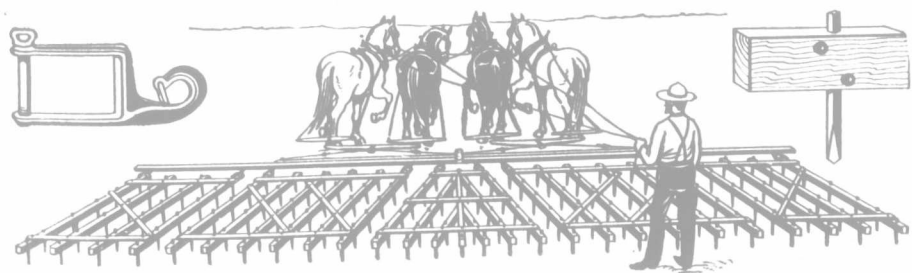
Made in
2 sizes

PULVERIZERS

16 Wheels
22 Wheels

A very necessary implement on the farm.

Pack your soil with this Pulverizer and you retain the moisture in the ground, insuring the necessary nourishment for your crops.



BOSS WOOD HARROWS

Made of Seasoned Oak. Two Rivets at Every Tooth. Malleable Draw Clevis. Correct in Design. Well Finished.

We have Channel Steel Harrows in All Sizes.

Write for Descriptive Catalogue.

JOHN WATSON MFG. CO. LTD.
WINNIPEG, MAN.

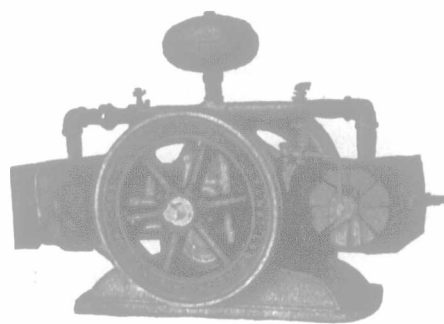
240 acres, twenty-two miles from Winnipeg, two-and-a-half miles from station on Canadian Northern, in the Stonewall district. 160 acres good wheat land, 30 acres bush, balance hay land. This is virgin land, no improvements, and a bargain at **\$18** per acre, one-fifth cash, balance 4 years, seven per cent. This land will double in the near future.

160 acres reported to be all good wheat land, open prairie. South-West quarter of 6-29-15, W. 2nd, at only **\$12** per acre. Would exchange this on city property.

Fred C. Hamilton

433 Main Street
WINNIPEG, Man.

The "NEW WAY"



7 H.P. Double Cylinder

AIR-COOLED

GASOLINE ENGINE

is one of the lightest engines of its power ever built for farm work, 700 lbs.; this makes it very desirable where it has to be moved around. Besides it uses no water, which makes it the most convenient outfit for winter work. The "New-Way" is also made in 3½ H.P. Single Cylinder size and we have a large number of these out on farms doing good work. Catalog free.

Cooper Gasoline Engine Co.

313 Donald St., Winnipeg, Man.