

**OUR TRUCKS**  
are fitted with rubber  
tires that do not  
come off. . . . .

**MONTEITH, NIXON & Co.,**  
MAKERS OF GOOD TRUCKS.  
256 Macdonell Avenue, Toronto.  
Telephone, Park 1388.

all the summer, judging from reports from the Mediterranean districts. Strawberries are plentiful from the more southerly districts. The following represents average quotations: Strawberries, quart boxes, 10 to 20c.; tomatoes, 6-basket crates, \$3.25 to \$3.50; asparagus, Canadian, per doz. bunches, 75c. to \$1; new potatoes, per barrel, \$5; cabbage, new per crate, \$2.50 to \$3; rhubarb dozen bunches, 30 to 40c.; radish, per dozen bunches, 25 to 30c.; lettuce, per dozen bunches, 30 to 35c.; onions, per large bunch, 12½c.; cucumbers, Boston, per dozen, \$1.25 to \$1.50; spinach, per hamper, \$1; pineapples, Cuban case, \$3.25; sweet potatoes, hamper \$2; white beans, \$1.75 to \$1.90; Egyptian onions, sack, 100 lbs., \$2; onions, Texas, Bermuda, 50 lb. case, \$1.75; Canadian onions, per bag, \$1 to \$1.10; oranges, extra fancy California navels, 96s., 112s., 126s., 150s., 176s., 200s., 216s., 225s., \$4.50; fancy Sorrentos, \$4.25 to \$4.50; Mexican oranges, 120s., 150s., 176s., 200s., 216s., 250s., \$2.75; Valencia oranges, 420s., \$4.75; do., large, 420s., \$5.75; California blood oranges, 324s., \$3.50; lemons, Messinas, \$3 to \$3.50; bananas, \$1.85 to \$2.35.

Groceries.—There have been considerable fluctuations in the sugar market the latest being a decline in this market of 10 cents per cwt. in all grades of refined. The movement is not a brisk one. A conspicuous feature of the general grocery trade is the position of canned goods, which are not only at high figures, but are in eager demand. Currants are becoming still firmer, and so are Valencia raisins. Travellers in country districts report, generally speaking, a fairly good prospect for a large volume of business.

Hides and Leather.—No further change has been made in hides, and a good, steady trade is going on. Tallow is unchanged. Not much actual change has occurred in leather, but the prospects are good for a fair season's business at steady to firm figures.

Live Stock.—At last market days, both at the city and Junction yards, the quantity of cattle offering was fairly good, and the quality fair. For exporters \$4.75 to \$5 were the prices realized, the bulk fetching about \$4.80. Choice butchers' animals sold at \$4.60 to \$4.70. There was not a very great demand for stockers and feeders. Not much enquiry was noted for milch

cows. Sheep and lambs were easy, the quality of many of the offerings not being very high-class.

Provisions.—Butter, especially creamery is a little firmer. Cheese continues quite strong in price as before, with a good demand. Eggs are firmer than ever, selling at 16½ to 17c. for new-laid. Breakfast bacon is a cent higher,

and all smoked meats are very firm, continue high-priced. Potatoes are growing scarce, and the market is firming up.

Wool.—No special change has taken place in the situation, and prices remain as foreshadowed in previous issues. Supplies are coming into the local market fairly plentifully.

## The Best Form of Investment

for a Life Company's funds is agreed to be in first Mortgage on approved Real Estate. This view has always been taken by The Great-West Life Assurance Company. So thoroughly has it been justified that never has a single dollar of principal or interest been lost on investments.

Nor has this security been obtained at the sacrifice of profit. An average of 7% is earned on all investments, permitting low premium rates and high profits to Policyholders.

Ask for rates at **your own age.**

**The Great-West Life Assurance Company,**  
HEAD OFFICE, WINNIPEG.

## Confederation Life Association

HEAD OFFICE, - TORONTO.

### OFFICERS:

W. H. BEATTY, Esq., PRESIDENT.

W. D. MATTHEWS, Esq., FRED'K WYLD, Esq., VICE-PRESIDENTS.

W. C. MACDONALD, Sec'y and Actuary. J. K. MACDONALD, MAN'G DIR.

### DIRECTORS:

W. H. BEATTY, Esq.

Hon. JAMES YOUNG.

S. NORDHEIMER, Esq.

W. D. MATTHEWS, Esq.

A. McLEAN HOWARD, Esq.

E. B. OSLER, Esq., M.P.

FRED'K WYLD, Esq.

GEO. MITCHELL, Esq., M.P.P.

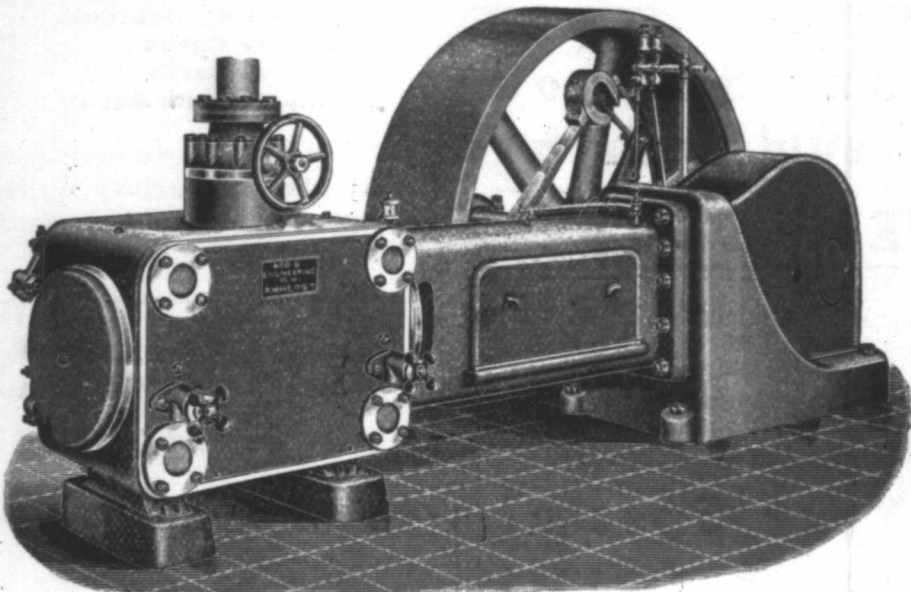
WILLIAM WHYTE, Esq.

Hon. Sir W. P. HOWLAND.

J. K. MACDONALD, Esq.

D. R. WILKIE, Esq.

Policies issued on all approved plans.



Our Corliss Engines are fitted with Robb-Armstrong Corliss valve gear which has the following good points.

**Positively Driven**  
**Encased in Oil**

**Runs Noiselessly**  
**Minimum Friction**

**Minimum Wear**

**Robb Engineering Co., Ltd.,**

AMHERST, N.S.

**District Offices**

320 Ossington Avenue, Toronto. Wm. McKay, Manager  
Bell Telephone Bldg., Montreal. Watson Jack, Manager  
355 Carlton Street, Winnipeg. J. F. Porter, Manager